



# &

**lookbook**

&-collection  
edition 2019

**modu  
lyss®**

get  
creative

## lookbook

&-collection  
edition 2019

The &-collection is our long-running coordinated approach to the way we design carpet tiles. Bold & vibrant, sophisticated & luxurious; & is a collection of styles that bring personality to every space.

Each year we create a new design to extend the collection, offering new variations in pattern, texture and colour.

This lookbook is meant to trigger your curiosity and creative spirit, revealing just some of the flooring possibilities the &-collection places at your disposal for your next projects.

So we welcome you to be inspired and get creative with the &-collection in your next project.

We look forward to seeing your own take on our collection in next year's book.



Justine Huysman, Designer & Vanessa Van Overmeeren, Product Development

---

**Fashion&  
Velvet&  
Fluid&**

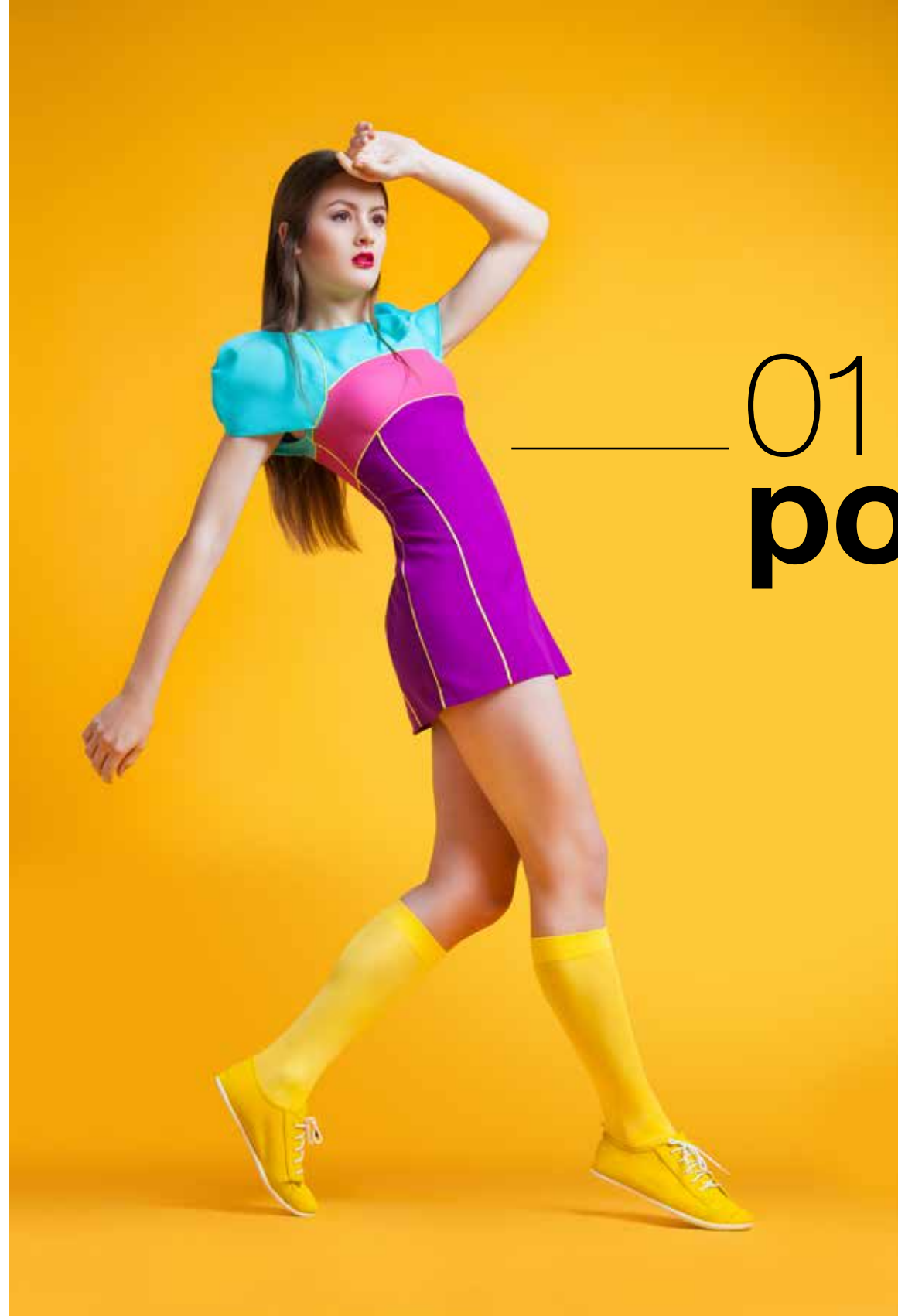
48

## Fashion& \_\_\_\_\_

Fashion& uses the power of colour upon a timeless base for a look that adds personality to any space. With its linear texture, subtle shine and 36 rich colourways, Fashion& brings a carpet tile for every style. Working as the perfect tonal base to the beginning of a powerful layout, or as a free-form expression of colour in bold blocking, Fashion& lets you pick your own flooring style.

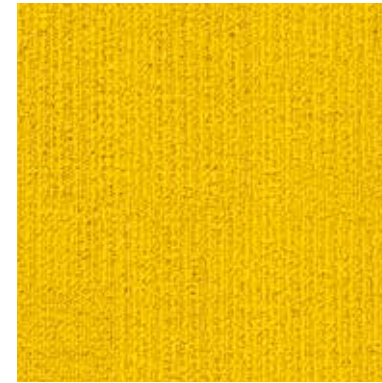
Choose your colour(s) from **six fashion-inspired themes** for a look confident in its use of hue and enjoy the endless creative possibilities Fashion& has to offer you.

As part of the &-collection of carpet tiles designed to be mixed and matched, Fashion& brings tone-on-tone coordination or high-impact contrast with the rich drama of Velvet& and the perfectly imperfect pattern of Fluid&.

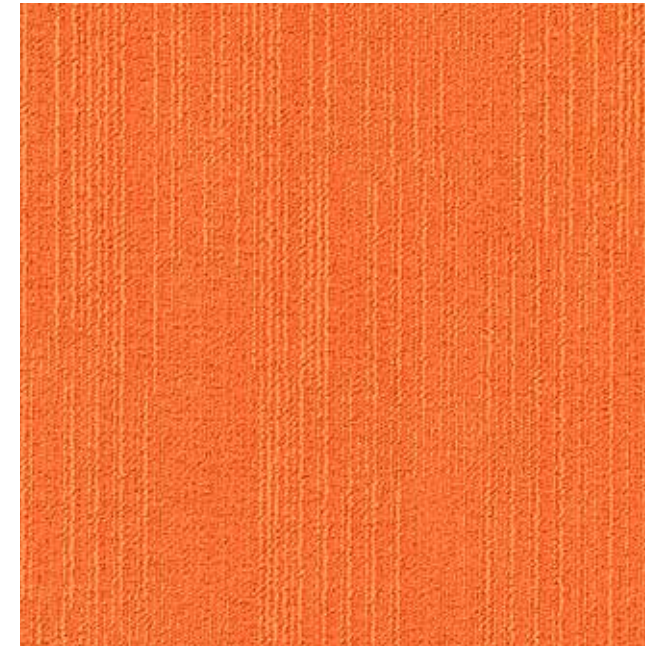


# 01 pop

For the bold of spirit, the bright and brave tones of Pop are sure to bring the punch and vibrancy to amaze.



Fashion& 240



Fashion& 375



Fashion& 699



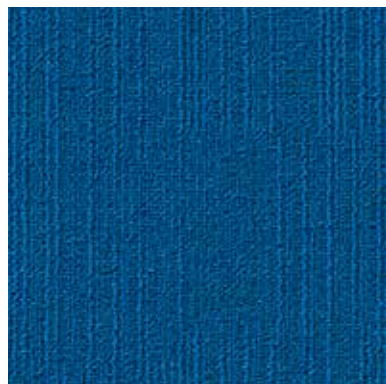
Fashion& 317



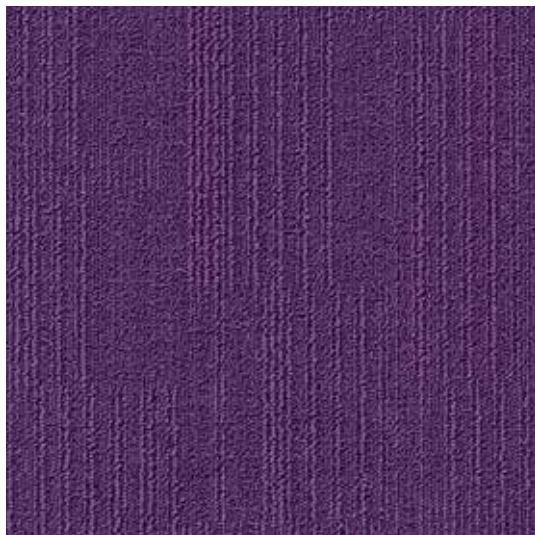
# sunny side up



Fashion& 240, 375, 699, 317, 580, 431, 381, 669



Fashion& 580



Fashion& 431



Fashion& 381



Fashion& 669

# tropical jungle

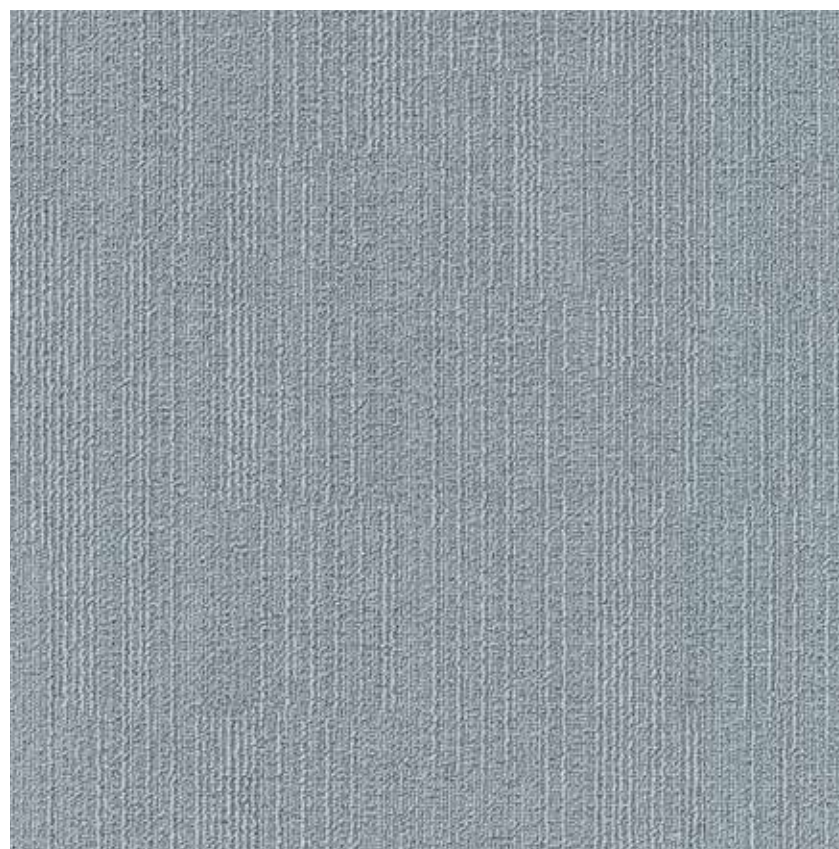


# 02 scandi

The calming pastel hues of Scandi showcase a more subtle side, representing soft minimalism and setting a sophisticated textural base for elegant interiors.



Fashion& 961



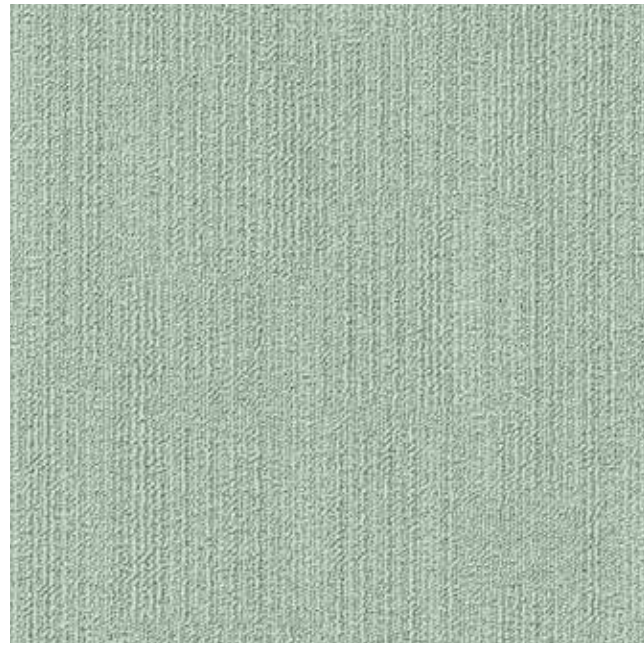
Fashion& 950



## soft naturals



Fashion& 206

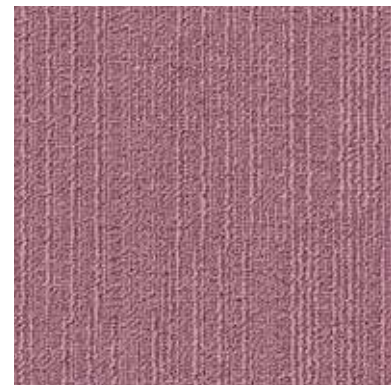


Fashion& 673

# dusky pastels



Fashion& 105



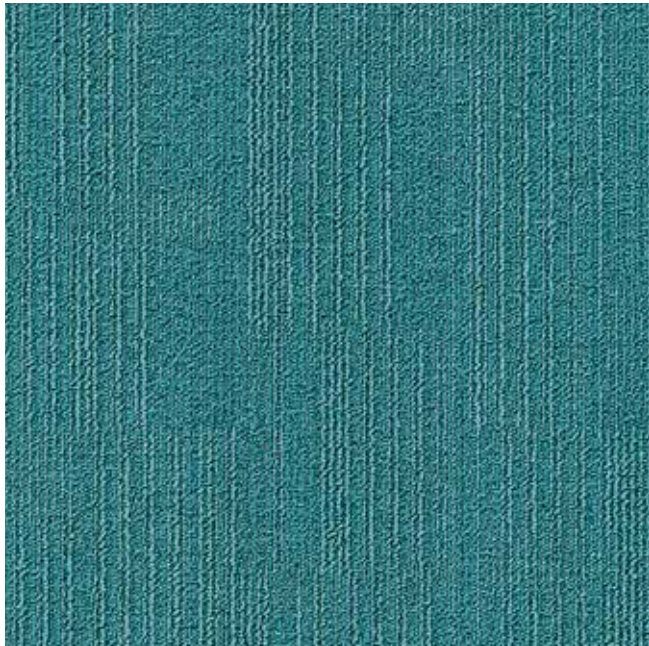
Fashion& 398





# 03 new luxury

Indulge in New Luxury, presenting an honest opulence in gold, aqua and navy that are at the edge of contemporary.



Fashion& 649



Fashion& 990



Fashion& 671

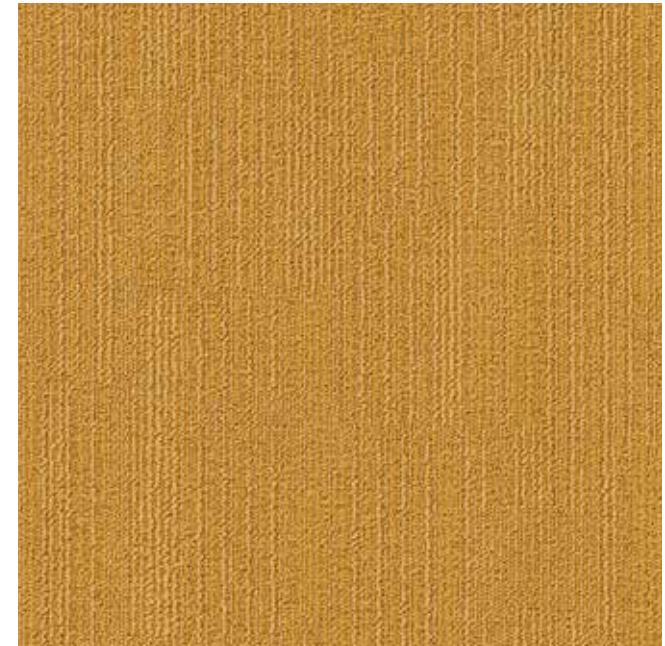
# modern glam





Fashion& 649, 990, 671, 241, 585, 512

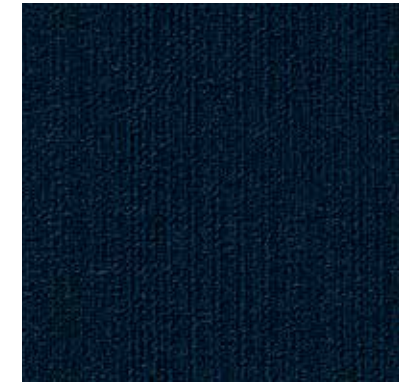
# gold rush



Fashion& 241



Fashion& 585



Fashion& 512



04  
**retro**

Choose for colours that never lose their verve with the confidence-boosting tones of yellow, orange and brown of Retro.



Fashion& 942



Fashion& 105



Fashion& 332

**groovy  
vintage**



Fashion& 942, 105, 332, 240, 832, 819

# memory lane



Fashion& 240



Fashion& 832



Fashion& 819



05  
**new  
 natural**

New Natural resets and revives with its deep and absorbing greens and blues, inspired by the captivating beauty of the natural world.



Fashion& 512



Fashion& 595



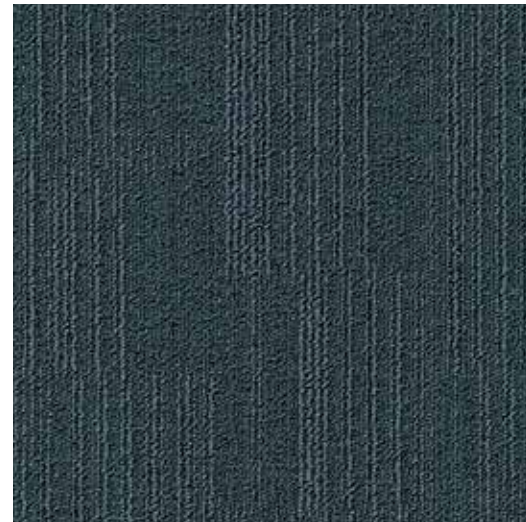
Fashion& 669

**misty  
 meadows**

# green hills



Fashion& 669



Fashion& 585



Fashion& 678

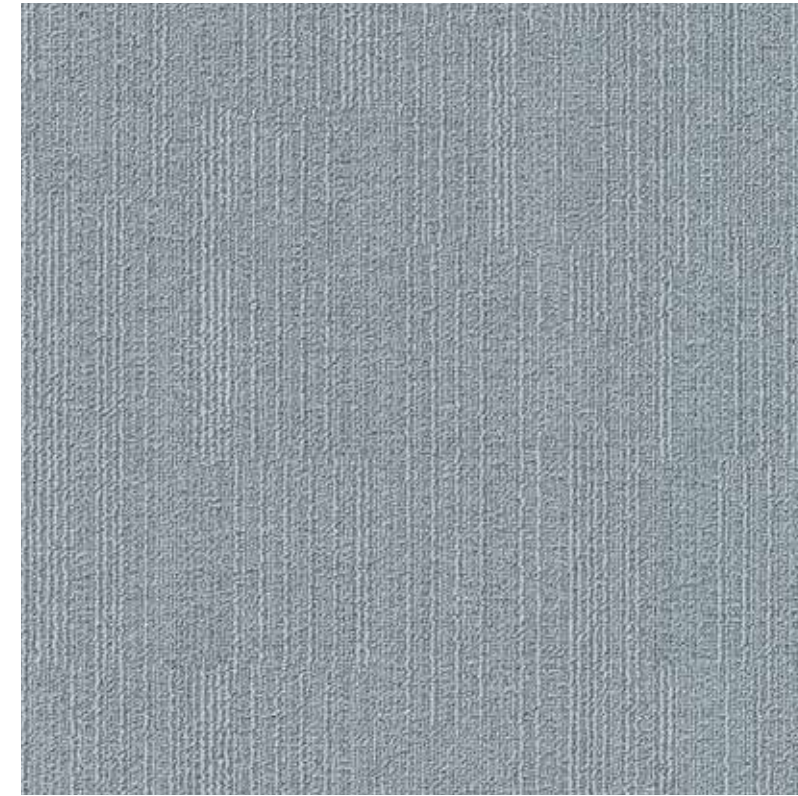


Fashion& 512, 669, 595, 585, 669, 678



06  
**grey**

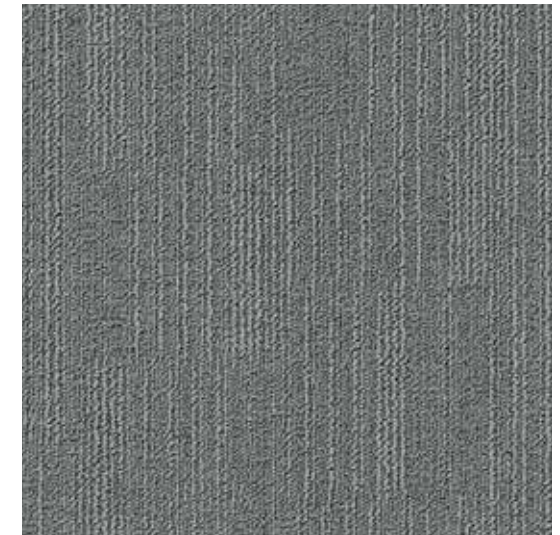
For those looking for a sleek finish, the exclusive silver tones of Grey imbue a sense of calm reflection.



Fashion& 950



Fashion& 979

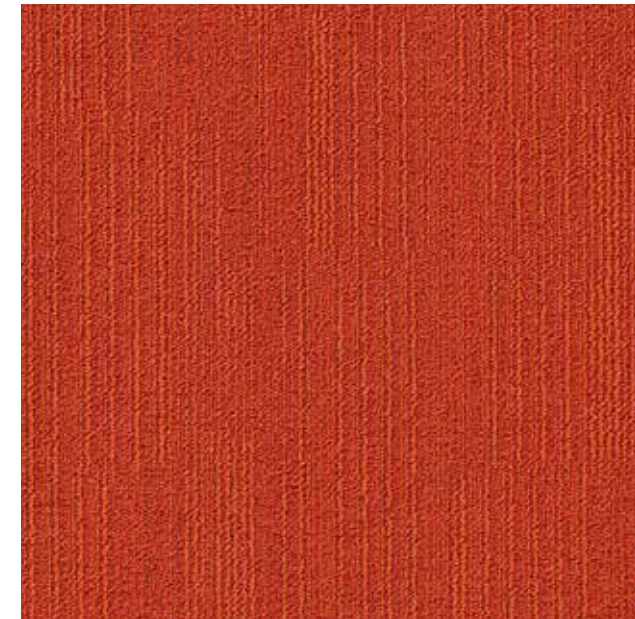


Fashion& 936

**frosty  
silver**



Fashion& 950, 979, 936, 332, 990, 961



Fashion& 332



Fashion& 990



Fashion& 961

**rockin'  
chic**

49

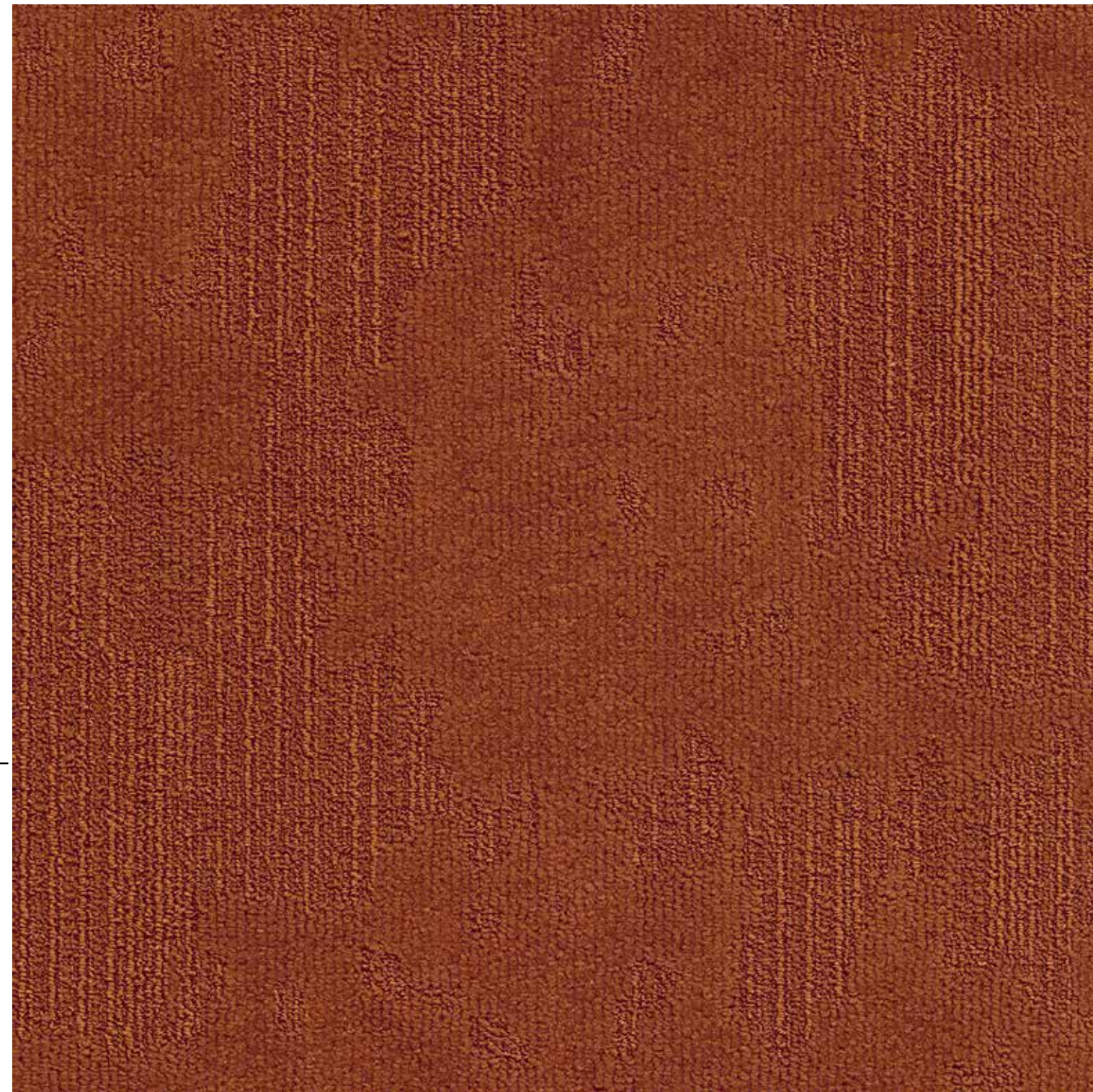
**Velvet&** \_\_\_\_\_

Unwind in luxury. Velvet& carpet tiles define opulence through lavish textural contrast and rich colours combining for the look of elegant, time-worn velvet. A tight and dense structure interspersed by areas of velours for a rich velvet-feel.

The luxury of velvet with the assurance of ultimate performance; Velvet& reigns supreme.



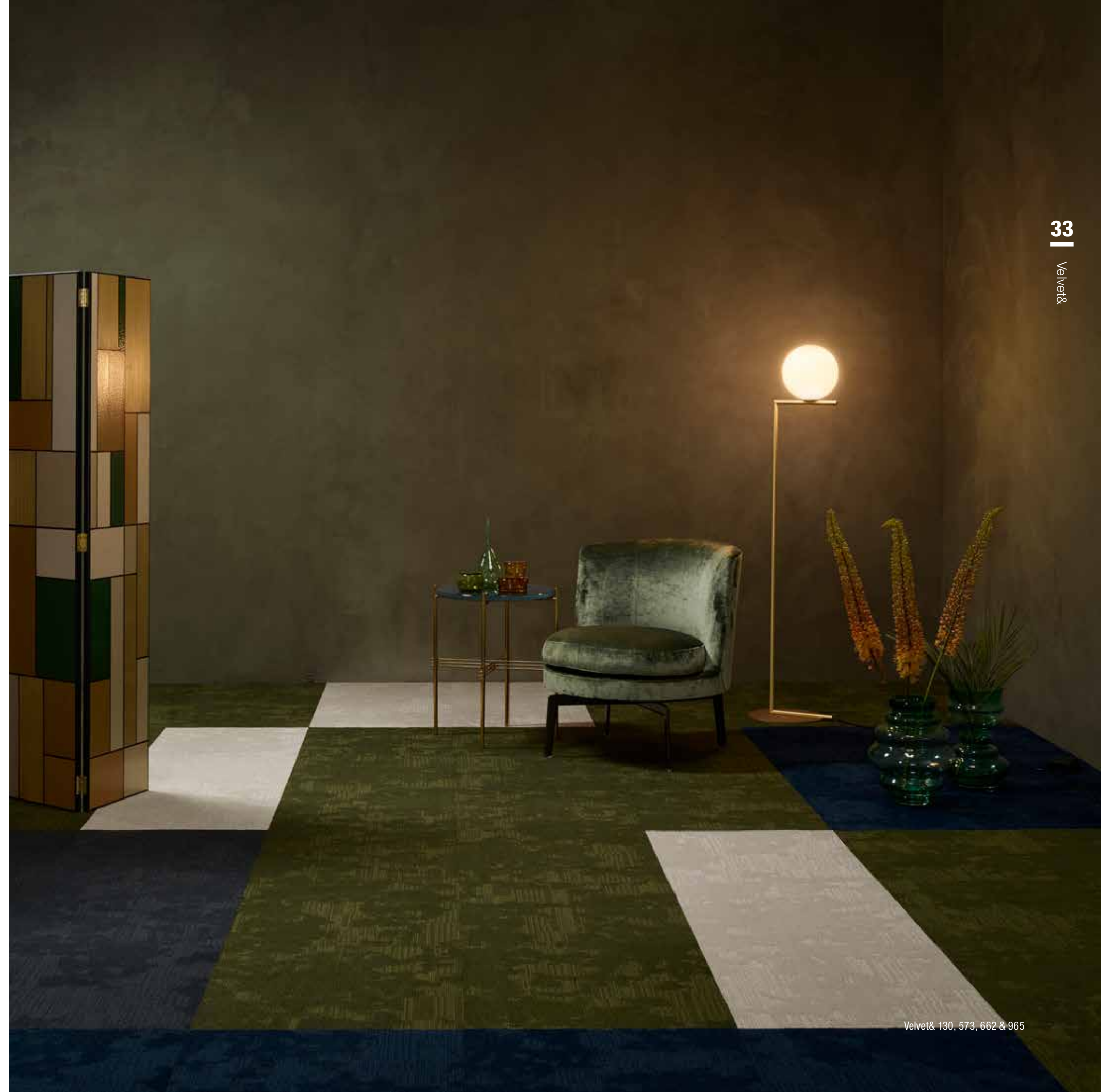
**lavish  
textural  
contrast**





Velvet& 662

Luxurious hues starring rust, navy, ocean, burgundy, jade, ochre, purple and grey are given tonal duality through random tip-sheared texture.



Velvet& 130, 573, 662 & 965





Velvet& 483, Fashion& 819



Velvet& 283

Embrace the graceful style of Velvet& when used in mesmerising singularity. Or mix & match the royal tints with selected colours from Fashion& for a tone-on-tone effect or with the perfectly imperfect pattern of Fluid&.



Velvet& 541 & 573



Our Velvet& collection won the 'Special Mention' award in the Building and Elements category of the German Design Awards 2019. This award is given to designs that feature particularly successful aspects or solutions.

# 22

## Fluid& \_\_\_\_\_

Fluid&, the newest addition to the coordinated &-collection, is a mind-blowing carpet tile range that brings a bold splash of colour, elevating the look of commercial spaces.

Fluid& is inspired by the organic, free-flowing aesthetic of adding paint to water. It reflects natural fluidity and rejects any need for flawless precision. In fact, it embraces the opposite: Fluid& is perfectly imperfect in its approach to pattern.



Fluid& 604

**perfectly  
imperfect**



Velvet&amp; 616, Fluid&amp; 604

## luscious colours

The colour palette of Fluid& includes luscious tones of ochre, green, blue, rust and grey. Harmonising beautifully with all products in the &-collection; the colour, pattern and textures of Fluid& can be used alongside the subtle linear texture of Fashion& or the vintage velvet look of Velvet& for a beautiful tone on tone effect.



Fluid&amp; 604





Fluid& 569, Fashion& 512



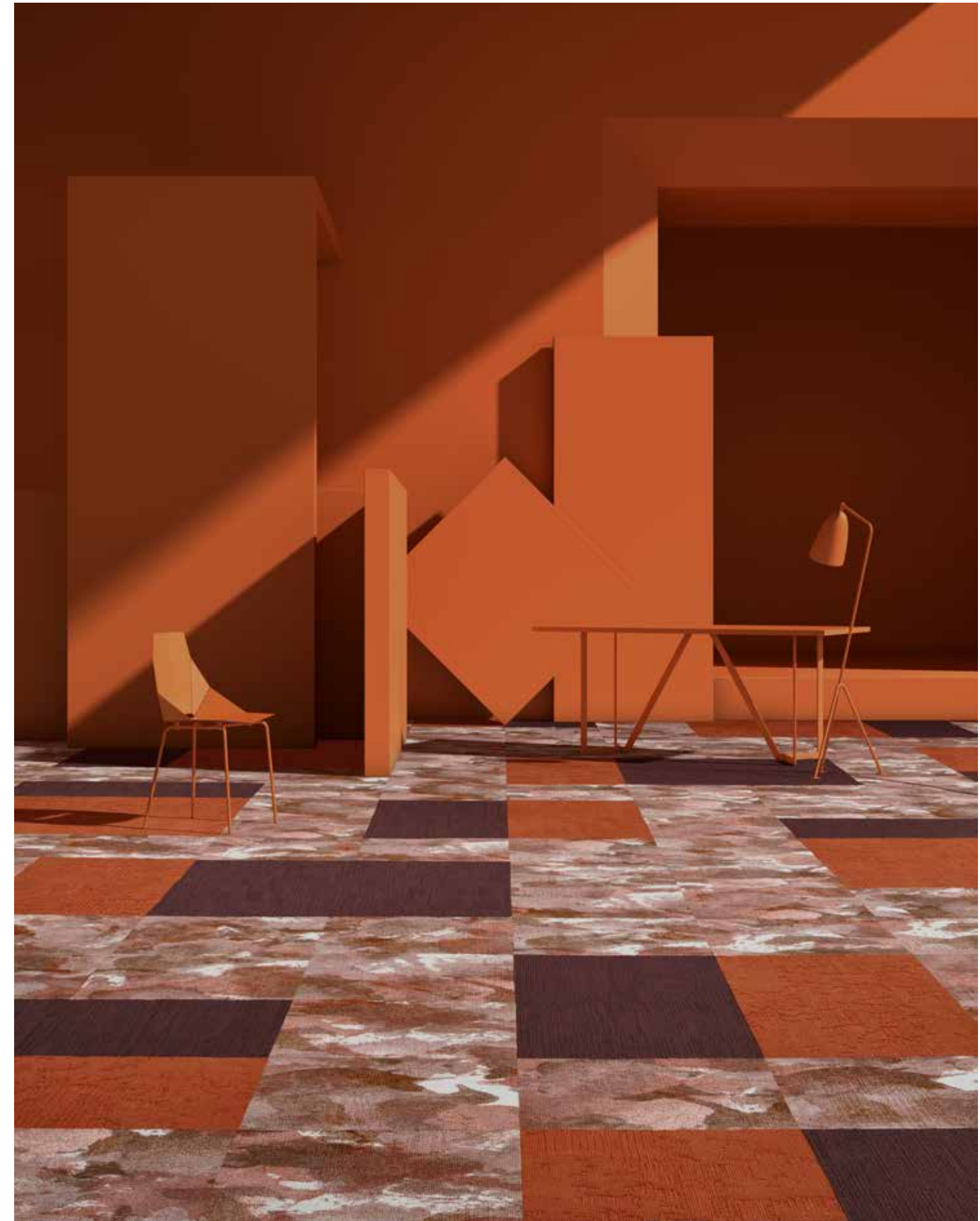
Fluid& 569

Utilising in-house, high-resolution print technology onto engineered polyamide yarn, the striking print of Fluid& is a premium example of modulyss' design identity and the technological synergies of the Balta Group.



Fluid&amp; 306

With a flowing pattern that's forever elegant, Fluid& offers new creative possibilities to commercial interiors. Whether you want to add extra depth to mix & match layouts, or use this powerful design on its own, Fluid& is ready and waiting for your next project.

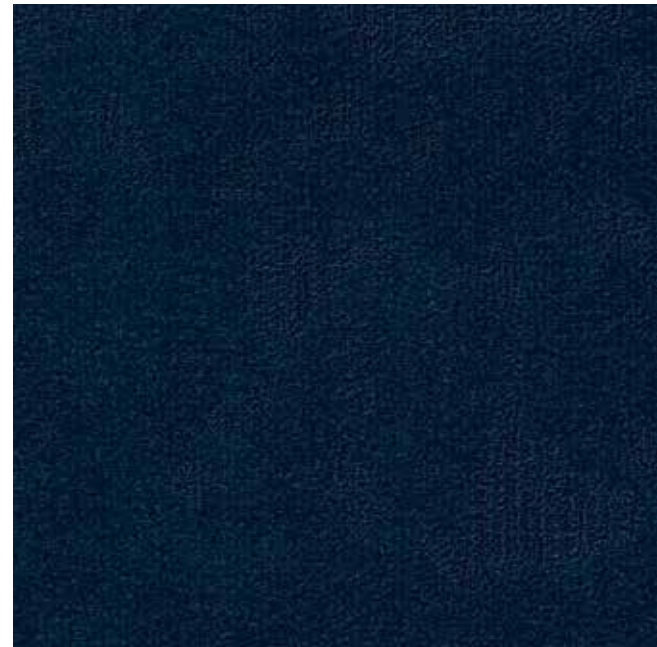


Fluid&amp; 306, Fashion&amp; 832, Velvet&amp; 283

# mix&match

---

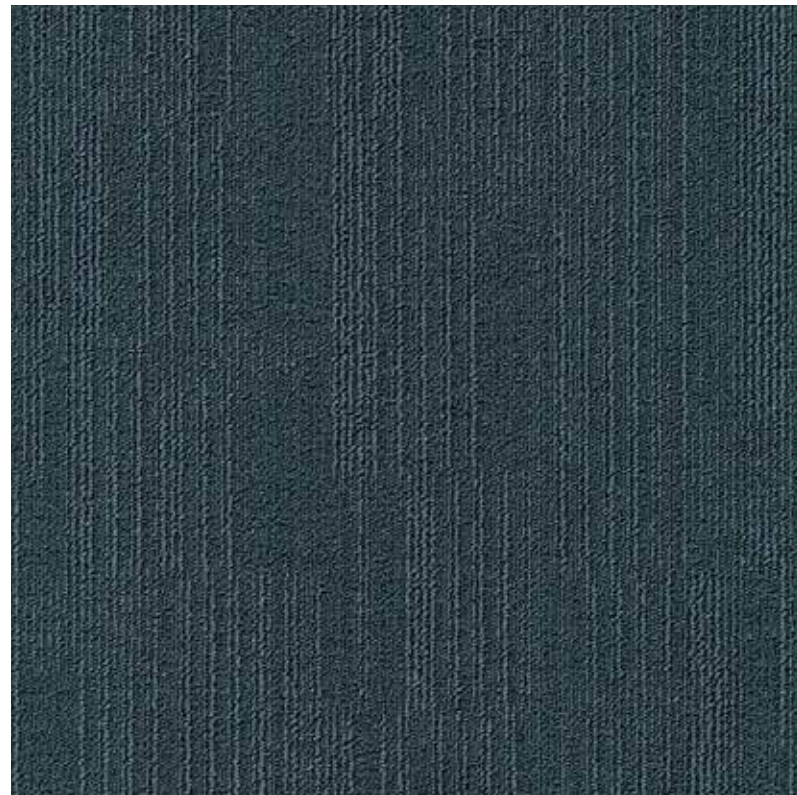
Although all the designs in the &-collection can be used in mesmerising singularity, they are developed to coordinate perfectly and create stunning layouts when mixed & matched with each other too.



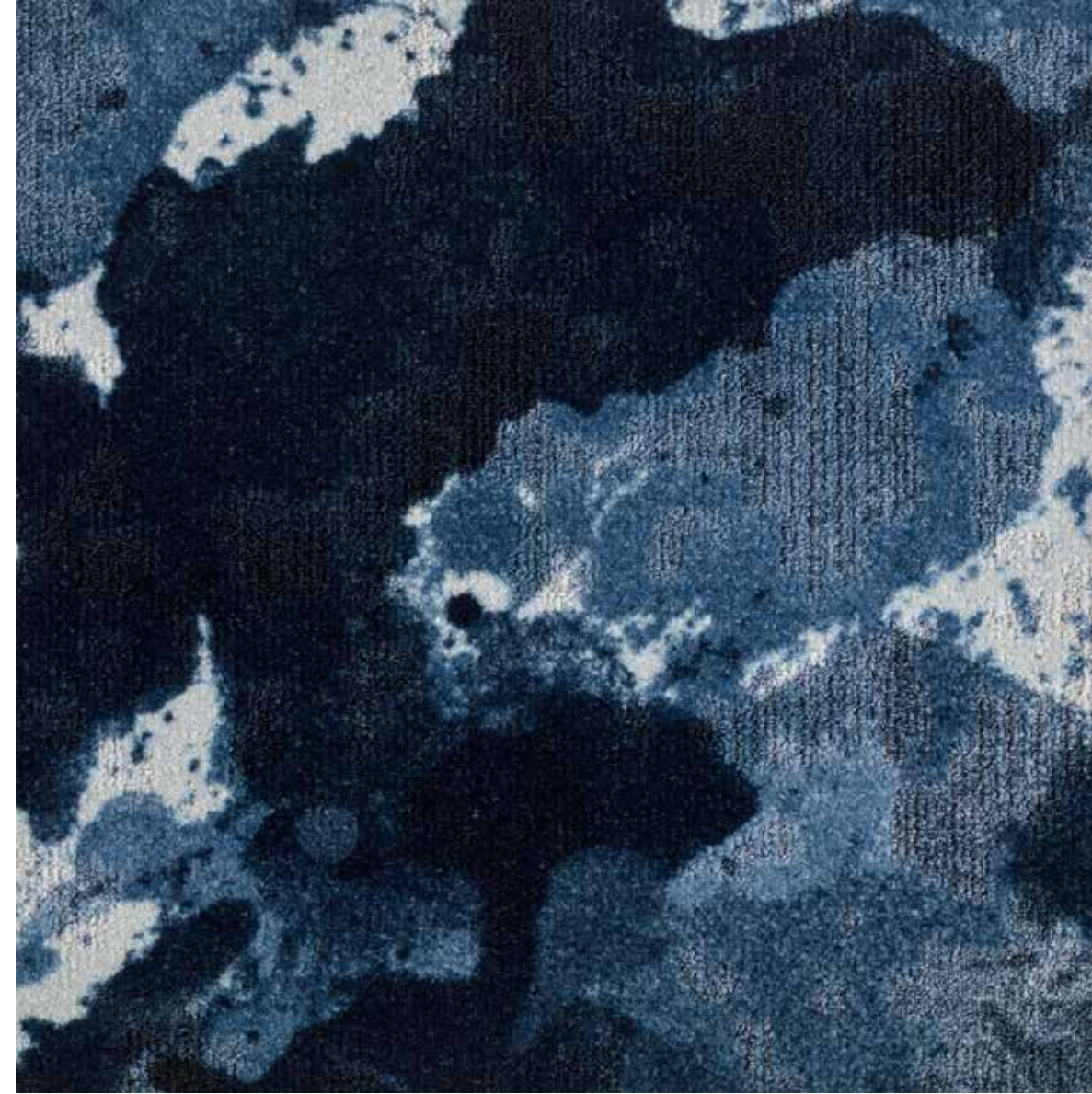
Velvet& 541



Fashion& 595



Fashion& 585



Fluid& 569



Fashion& 512

# majestic blue



Fluid& 604



Velvet& 616

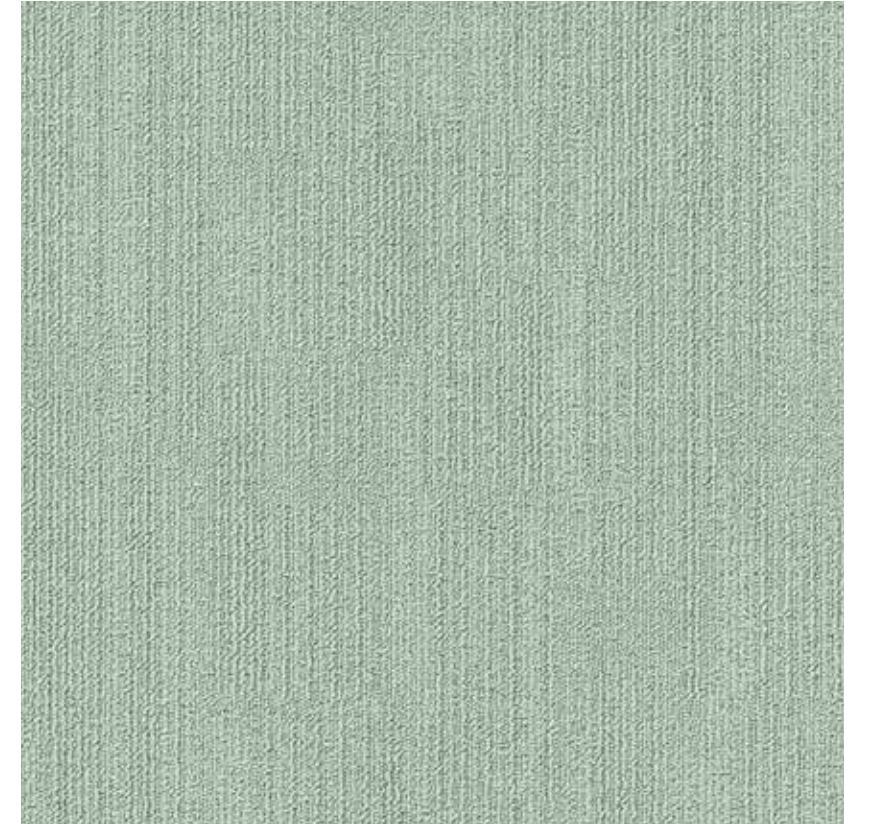
# luscious green



Velvet& 662



Fashion& 678



Fashion& 673



Fluid& 604, Fashion& 673



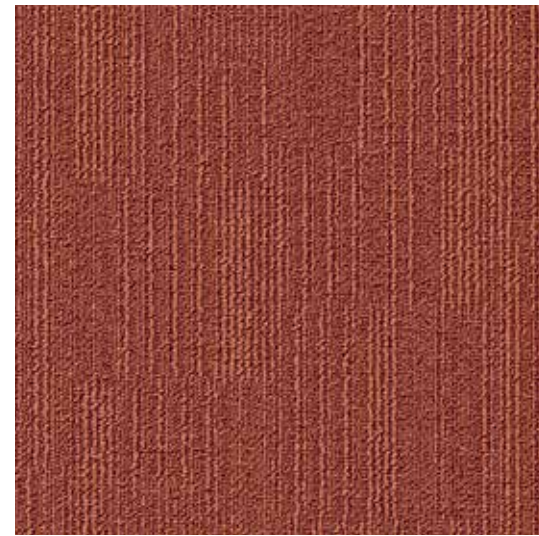
Fluid& 604, Velvet& 616



Fashion& 105



Fluid& 306



Fashion& 819

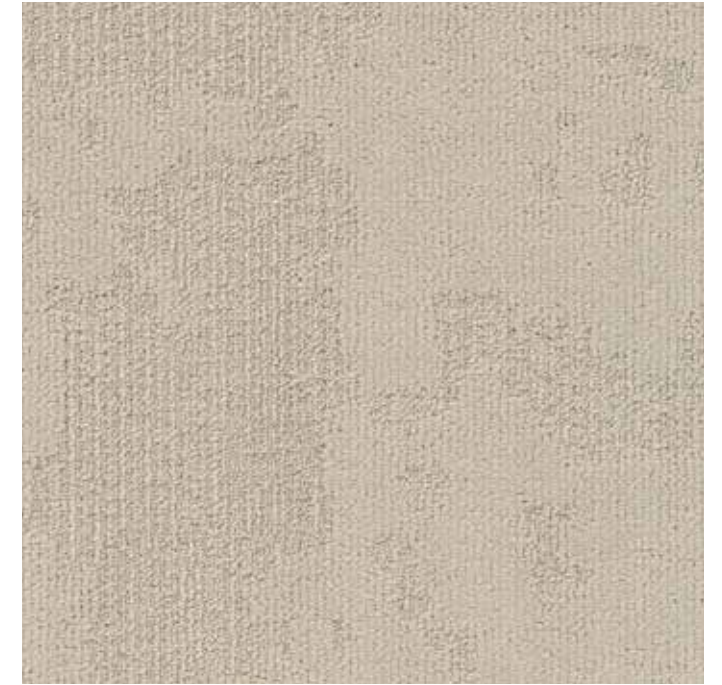
# lavish rust



Velvet& 283



Fashion& 832



Velvet& 130



Velvet& 213



Fashion& 105



Velvet& 212



Fluid& 224

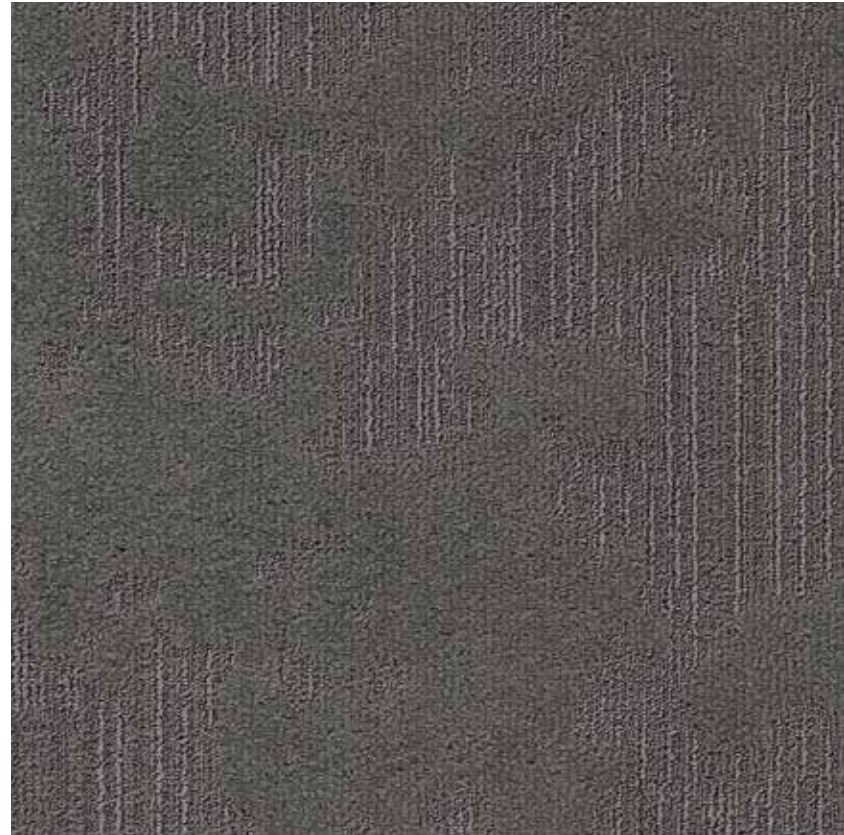


Velvet& 130

**spicy  
yellow**

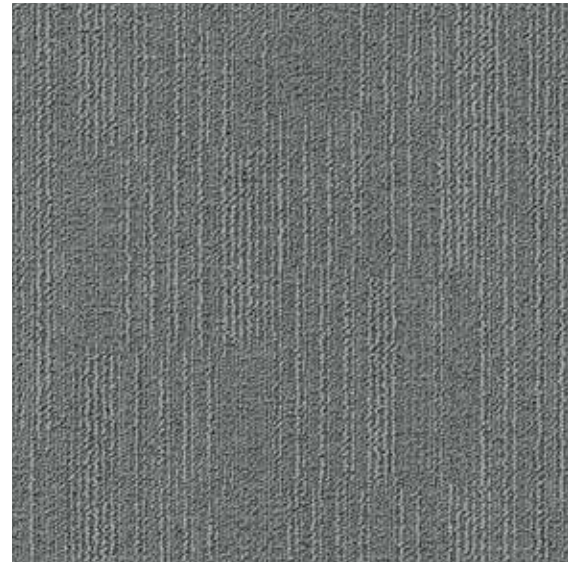




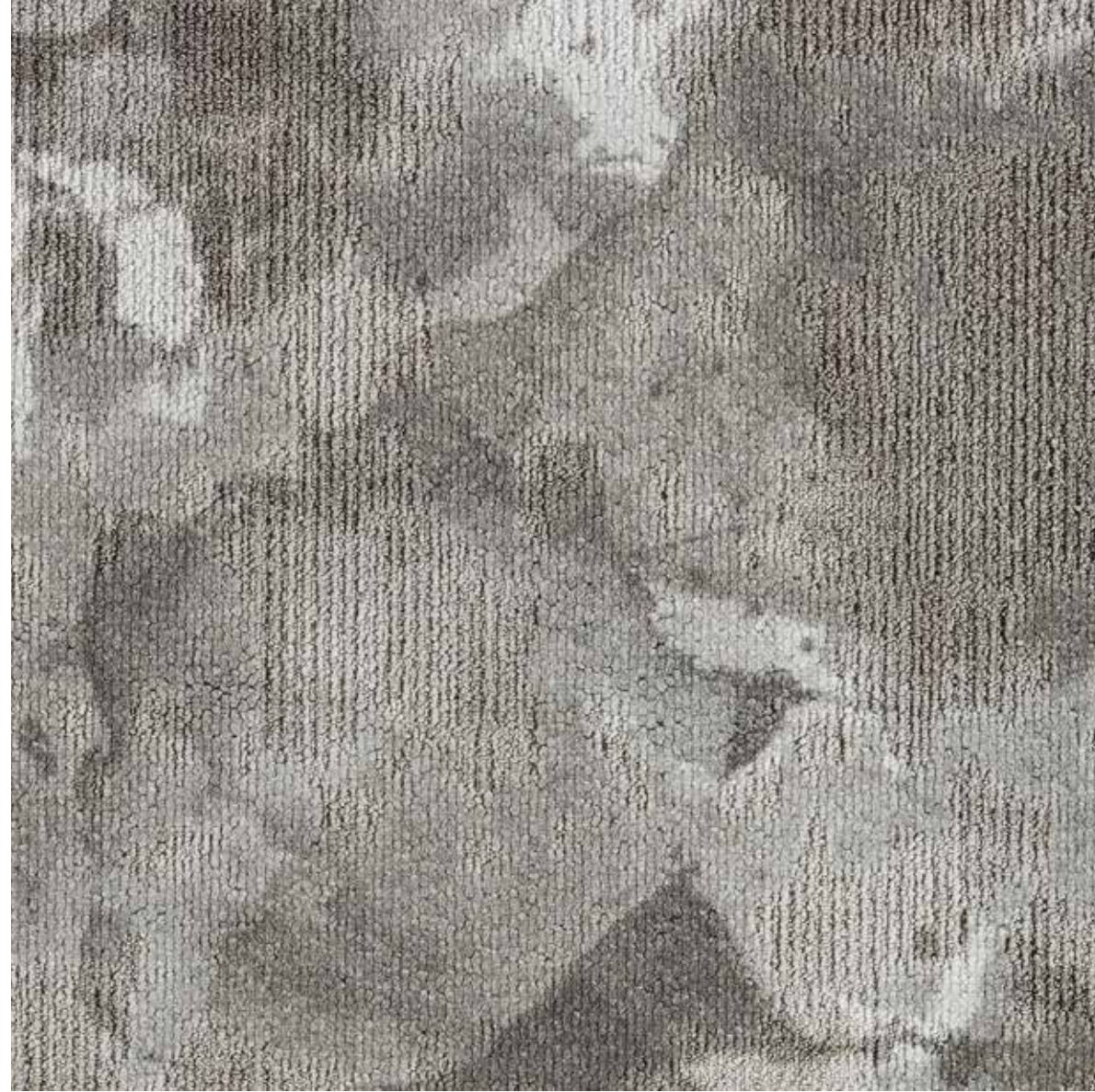


Velvet& 907

**creamy  
beige**



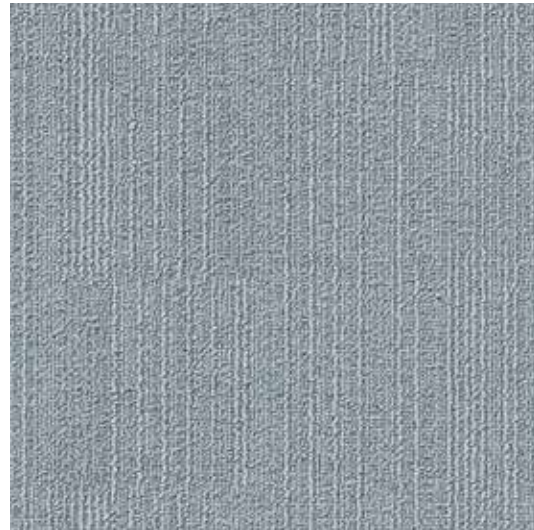
Fashion& 936



Fluid& 850



Fluid& 961



Fashion& 950



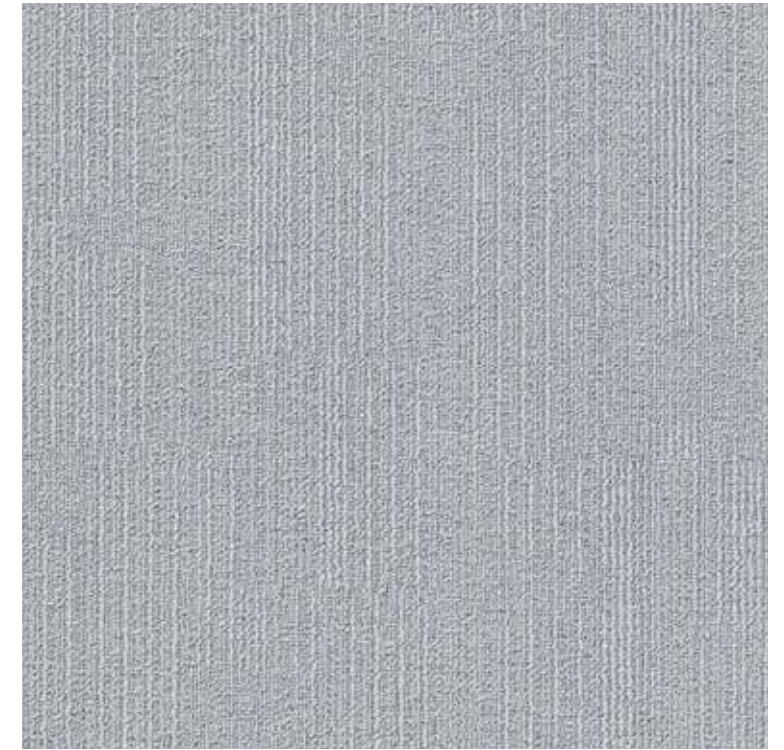
Fashion& 961



Fashion& 966



Velvet& 963

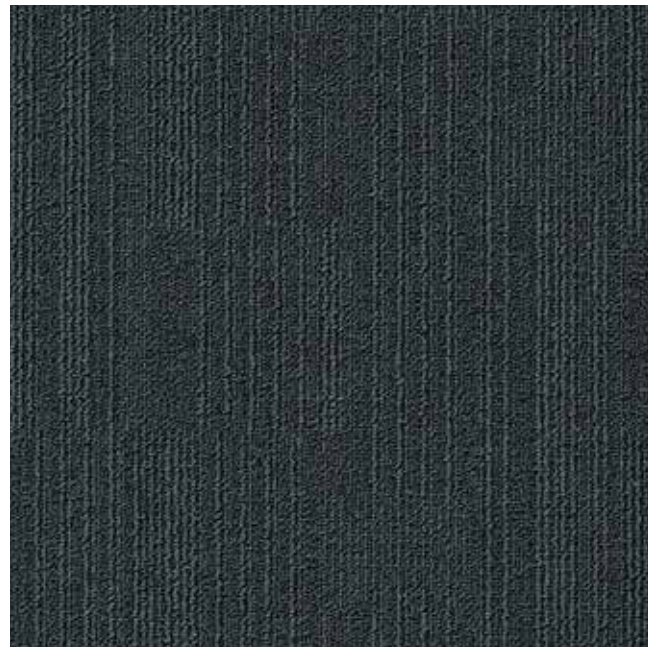


Fashion& 979

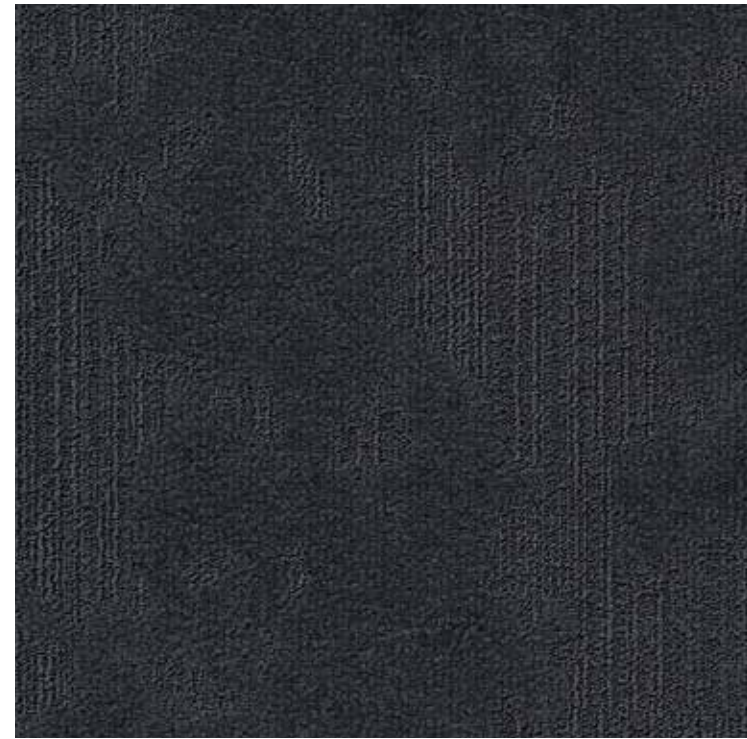
# mysterious grey



Fashion& 961



Fashion& 966



Velvet& 965

# carbon grey



Velvet& 963



Fashion& 979



Fluid& 990

# Projects

---

# Evercore

UK  
Surface area: 410 m<sup>2</sup>  
Collections: Velvet&  
Architect: Kelly Bache, Space Workplace Ltd



Velvet& 932



Velvet& 932



# Nationale Nederlanden

Belgium  
Surface area: 330 m<sup>2</sup>  
Collection: Velvet&  
Architect: Art Nivo



Velvet& 130, Moss 850

Velvet& 283, Moss 850, Willow 850

# Paysafe

Bulgaria  
Surface area: 3,840 m<sup>2</sup>  
Collections: Fashion&  
Architect: Cache Atelier



Fashion& 915, 431



Fashion& 961, 649



Fashion& 915, 669





Velvet& 990, 963, 932

# Crowdfox

Germany  
 Surface area: 1,205 m<sup>2</sup>  
 Collection: Velvet&, Dusk  
 Architect: Crowdfox



Velvet& 907, 346



Velvet& 213, 609



# De goede woning

The Netherlands  
 Surface area: 830 m<sup>2</sup>  
 Collection: Fashion&  
 Architect: Helga Snel



Fashion& 950



Fashion& 950

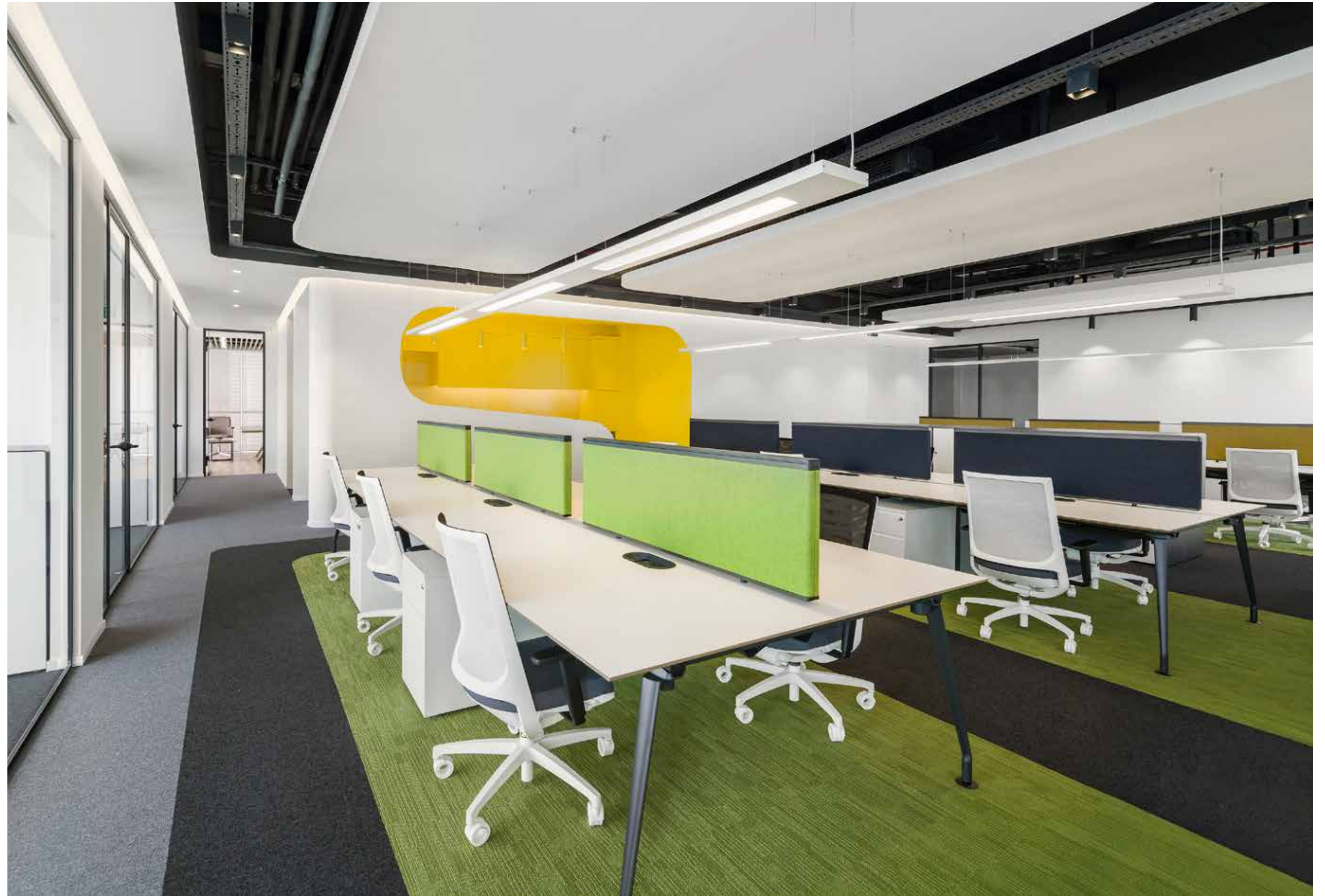
Fashion& 950

# IstJet HQ

Turkey  
Surface area: 475 m<sup>2</sup>  
Collection: Fashion&, First  
Architect: Jeyan Ulku Architects



Fashion& 669, First 990, 961

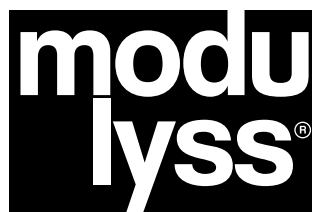


Fashion& 669, First 990, 961

---

**explore,  
inspire,  
share.**

We look forward to seeing your own take on our collection in next year's book. Make sure to share it with us!



[www.modulyss.com](http://www.modulyss.com)