

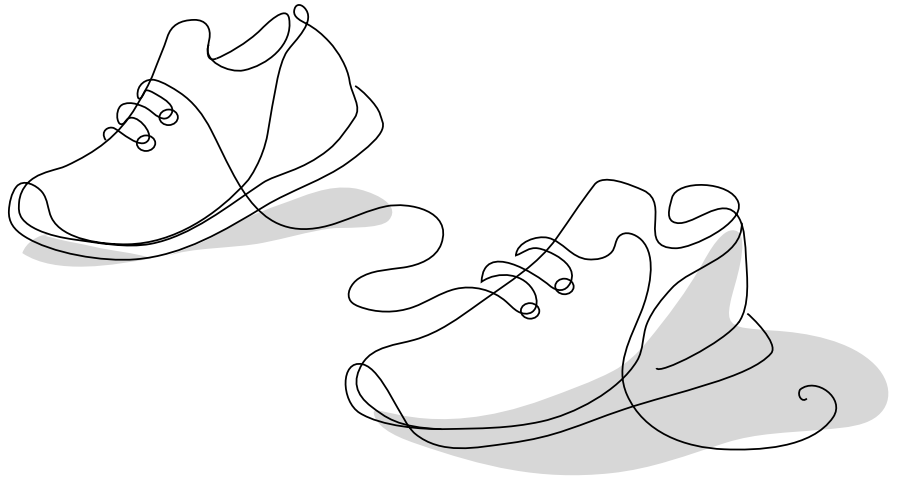
modu
lyss®

comfortBack

Shock-absorbing backing



comfortBack
for improved wellbeing
& underfoot comfort
within your
workspace.



WHAT IS COMFORTBACK?

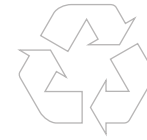
comfortBack, a recycled polyester felt, reduces muscle fatigue while also fending off wear. If you're looking to improve wellbeing and comfort within your workspace, then comfortBack is the way to ensure cushioning and sound-absorption for a floor that's comfortable for longer.

comfortBack is available as a standard on a selection of modulyss collections but can also be equipped on any other collection as from a certain minimum order quantity.

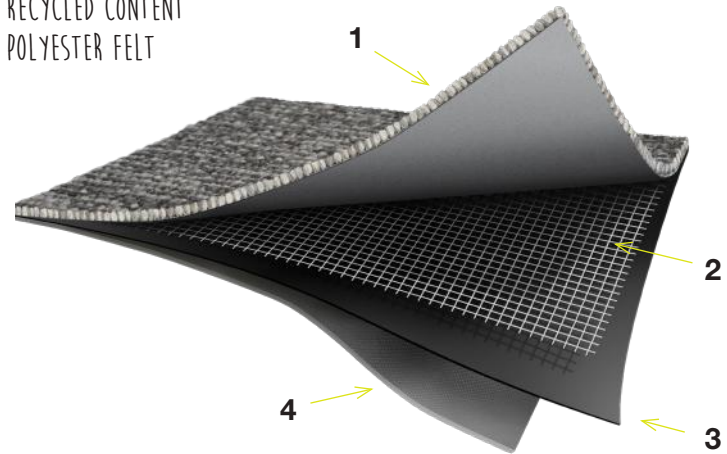
JUST AS COMFY AS THE SOLE OF
YOUR FAVOURITE PAIR OF SNEAKERS,
COMFORTBACK IS A BACKING
THAT IMPROVES UNDERFOOT CUSHIONING.

1. Pile material + primary backing + precoat (latex)
2. Glass scrim for superior dimensional stability
3. Back2Back recycled content modified bitumen layer for strength
4. 90% recycled felt comfortBack for better comfort and longer life

90%



RECYCLED CONTENT
POLYESTER FELT



HOW DOES COMFORTBACK WORK?

comfortBack uses a specially developed 90% recycled content polyester felt to provide its comfort. It's lightweight yet dense enough to absorb, and recover from, footfall time and time again.

The high-recycled content and lack of chemicals not only make comfortBack better for the immediate environment of your space, but for the planet as a whole.

What adhesives should I use with comfortBack?

No permanent gluing is needed to install the comfortBack equipped carpet tiles. We recommend a slip-resistant and tackifier coating, such as the UZIN U 2100 adhesive. This type of solvent free and low-emitting adhesive has a lasting, non-hardening adhesive effect once it's dry.



OUTSTANDING PERFORMANCE

Instead of the fibres having to absorb the constant impact of footfall and traffic, comfortBack takes up the challenge and enhances the wear resistance and appearance retention of modulyss carpet tiles. comfortBack makes our high-performance carpet tiles last even longer, while making them easy to install, quieter and of course, more comfortable.

Long-term durability

The resilience and construction of comfortBack's recycled polyester felt backing ensure that the carpet tiles provide the long-term durability and strength demanded in today's busy workspaces, even under intense use.

Less noise

Contributing to an all-round comfort focus, comfortBack's dense felt helps to reduce the noise of background conversations and footfall when compared to standard Back2Back (bitumen) equipped carpet tiles.

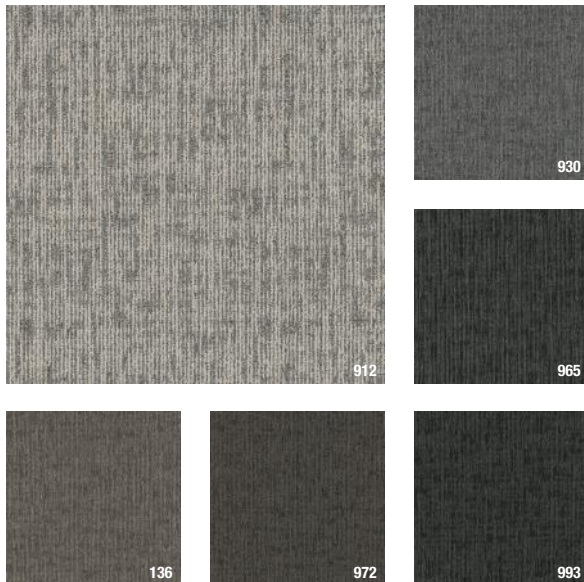
Keeping quality high

modulyss carpet tiles with Back2Back (bitumen) are known for faultless performance and this remains the case with comfortBack: burning behaviour, perfect seams, dimensional stability and more; comfortBack equipped carpet tiles have it all.

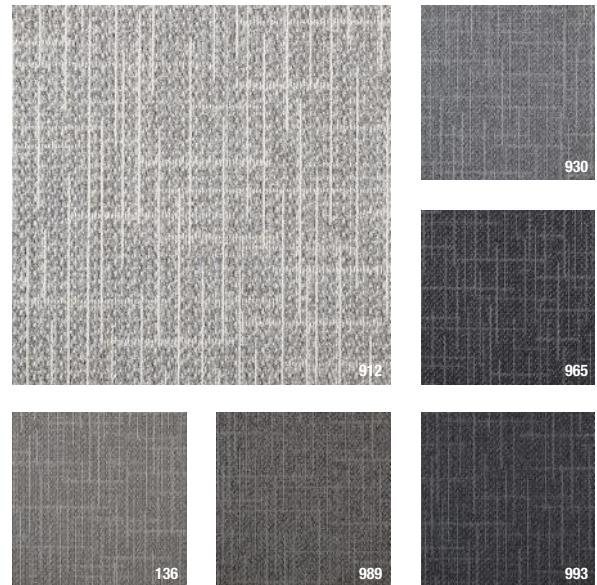
STOCK RANGE 3 COLLECTIONS, 18 COLOURWAYS

comfortBack is available as standard on our First Absolute, DSGN Cloud and DSGN Tweed carpet tile collections. Each available from stock in six usable colourways, they're ready to provide enhanced comfort and longer life.

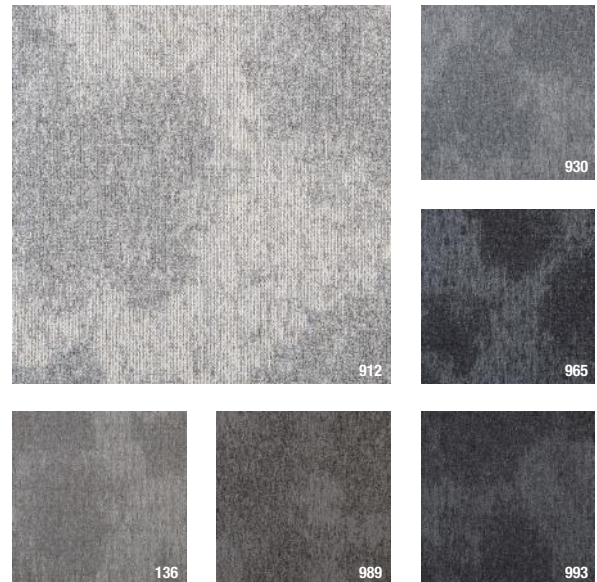
First Absolute



DSGN Tweed



DSGN Cloud



SPECIALS ON REQUEST

comfortBack can also be equipped on any modulyss carpet tile as from a certain minimum order quantity.

Contact your local modulyss sales representative for more information.

modulyss
Zevensterrestraat 21
B 9240 Zele

T +32 (0)52 80 80 80
F +32 (0)52 80 82 00
info@modulyss.com

www.modulyss.com