

A photograph of a handcraft collection featuring a wooden spinning spindle with a white woolen spindle and a ball of white wool, resting on a piece of weathered, greyish-brown wood. The scene is lit with bright, natural light, casting sharp shadows. The text 'modulyss' is in the top right, and 'HANDCRAFT COLLECTION' is centered in the middle.

modu
lyss®

**HANDCRAFT
COLLECTION**

WHERE NATURE MEETS CRAFT.

Inspiration is all around us. All we have to do is look.
And combine the most valuable impressions in
one organic piece.

The story behind the Handcraft Collection is just that.
Now, it's your turn **to be inspired.**

*By true
craftsmanship &
thoughtful design...*



Styling: Lara Hutton. Photograph: Sharyn Cairns. Sea Art - An Aesthetic Convergence.
Exhibition by Lara Hutton in collaboration with Jacqui Fink, Nov. 2013.

*By the latest
fashion trends.*



*Or the enriching
experience of travel.*

Made with 100% Regenerated Nylon

ECONYL

100% regenerated yarn.



And to leave us with beautiful memories.



But the greatest source of inspiration is nature.

Always there for us to discover something new.

Of the pebbles under your feet.



On the wood between your fingers.



By the beauty of everyday life.







HANDCRAFT COLLECTION

Nature gives us so much to work with. Colours, shapes and patterns.
But also, materials to construct everything we can dream of.

The **Handcraft Collection** brings together scraps and stitches of nature's tale. Invite the outside in with the collection's organic patterns and hues. A green inspiration for a tranquil atmosphere.

Get away from the hustle and bustle of your busy workspace and enjoy the peace and quiet of the outdoor experience.

Leaf through this catalogue to discover the fragmented designs of **Moss, Leaf, Willow** and **Grind**. Parallel pieces of a pure puzzle.
How will you put it together?





Of moss and motif.

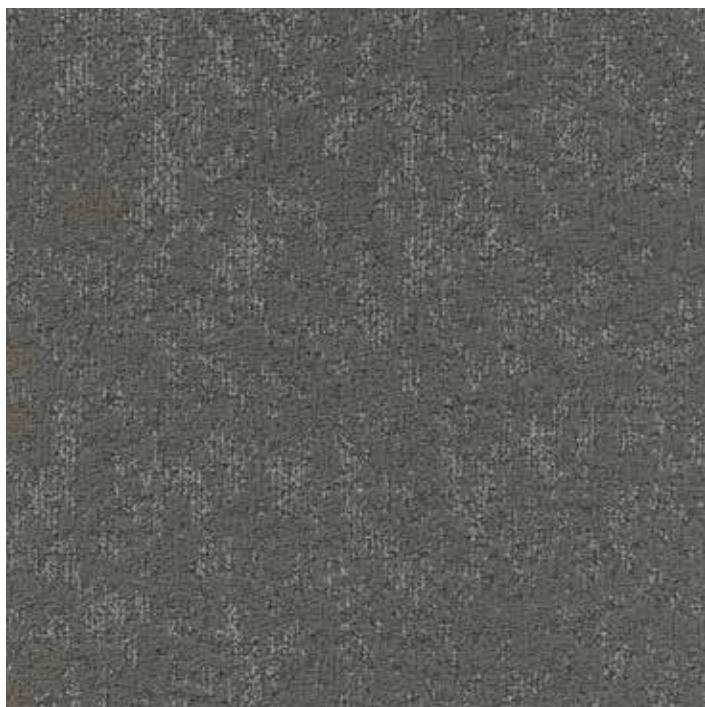
Nature is our richest source of textures. Some we cannot miss, for others we have to take a closer look. But beauty is often strongest in those small, easily overlooked parts of the natural world. Lean in, take a closer look: can you see it?

MOSS.

Of moss and motif.



Fern Moss.



Moss 961



Moss 668



Moss 130



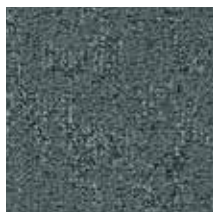
Moss 983



Moss 850



Moss 352



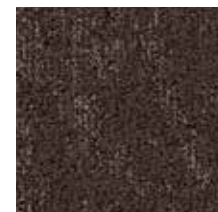
Moss 586



Moss 592



Moss 966



Moss 810









LEAF.

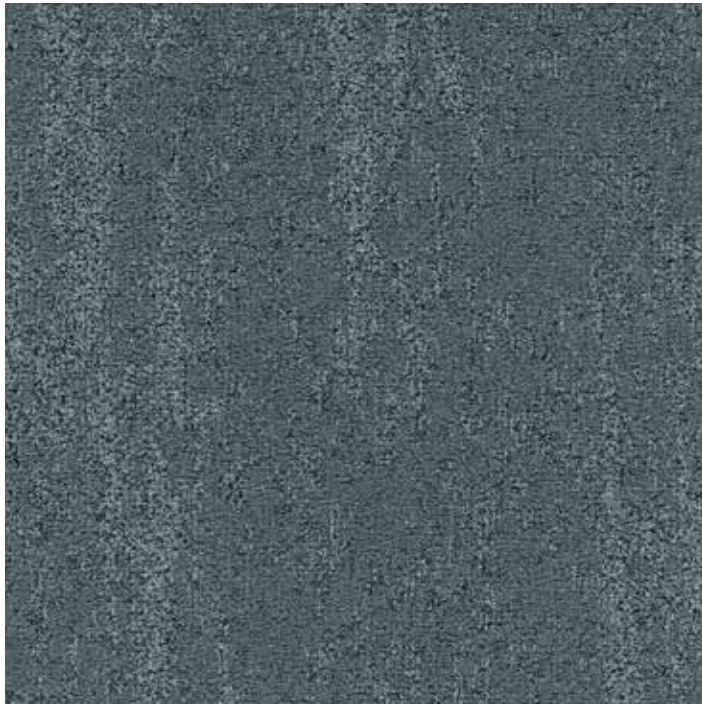


*Which leaf
would you pick up?*

The falling of leaves marks the changing of seasons. A fresh start, with new choices and new possibilities. Much like the fabulous colours of fall foliage, the designs in our Leaf Collection come in heaps of different hues.

LEAF.

*Which leaf
would you pick up?*



Leaf 586



Leaf 850



Leaf 352



Leaf 592



Leaf 966



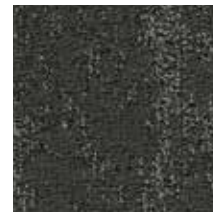
Leaf 810



Leaf 130



Leaf 983



Leaf 961



Leaf 668







Leaf & Moss 850

A close-up photograph of a dark, weathered wood surface. The wood grain is highly textured and intricate, with swirling, wavy patterns in shades of dark brown, black, and grey. The lighting is dramatic, highlighting the rough, uneven texture of the wood. The word "WILLOW." is overlaid in the center in a bold, white, sans-serif font.

WILLOW.



Designed by nature.

The natural bends of tree bark mimic life's unexpected twists and turns. A unique pattern that takes on various colours, textures and patterns. Find your way out of the maze, into Willow's warm and welcoming motif.

WILLOW. *Designed by nature.*



Willow Bark.



Willow 668



Willow 130



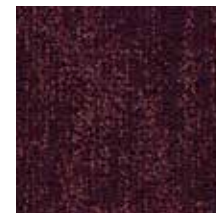
Willow 983



Willow 961



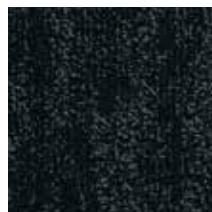
Willow 850



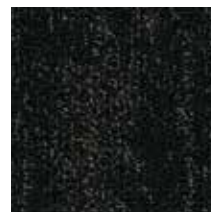
Willow 352



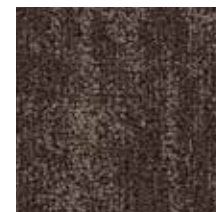
Willow 586



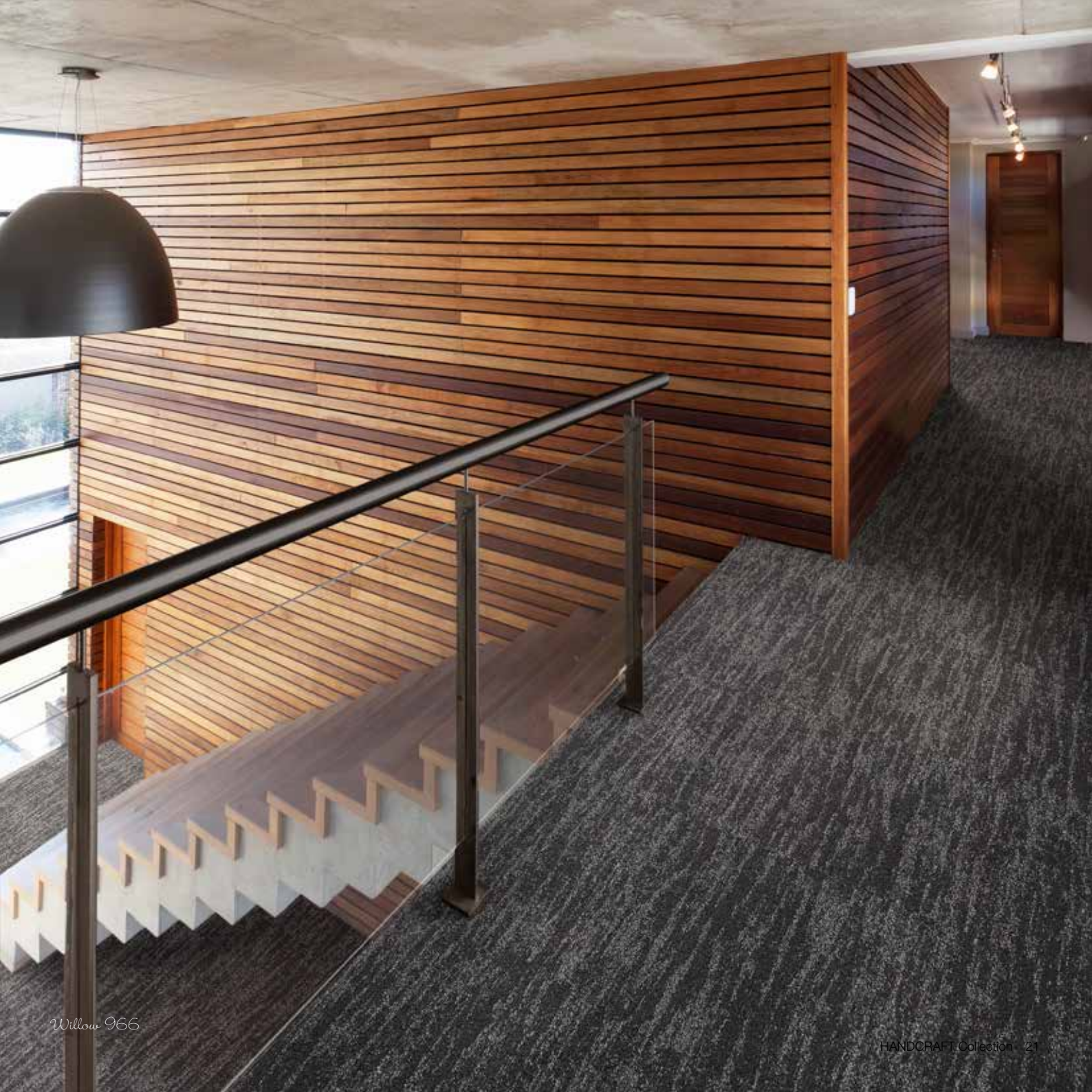
Willow 592



Willow 966



Willow 810



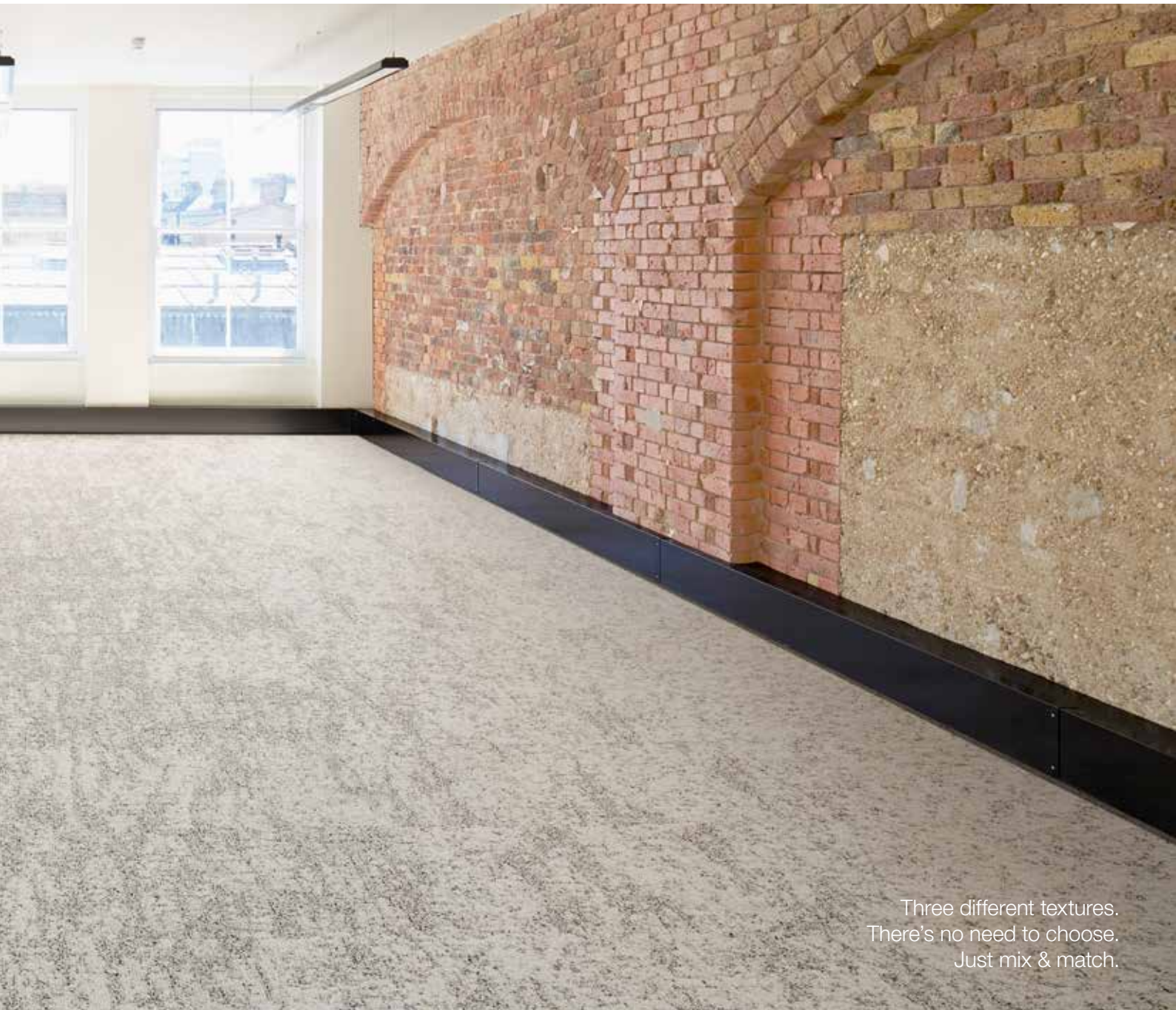




Willow & Leaf 586



Moss, Leaf & Willow 130



Three different textures.
There's no need to choose.
Just mix & match.



Moss, Leaf & Willow 983



Flexibility first. Combine Handcraft's multiple textures into one organic piece.



Combine with
GRIND.



*The road
less traveled by.*

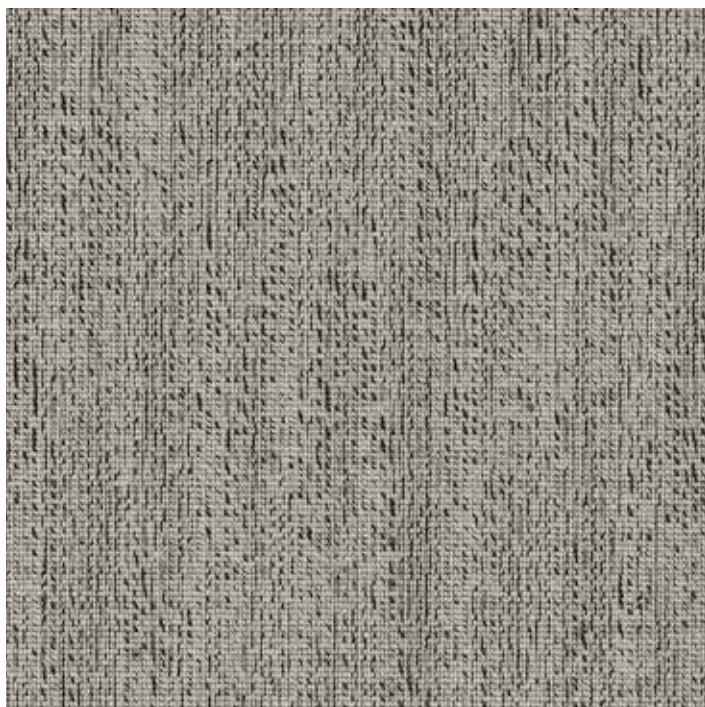
Unpaved roads are roads that lead you to the best views. Roads that are less traveled by. Roads for those of us who want to go the extra mile. They represent a different kind of travel. Because often, the journey trumps the destination.

GRIND.

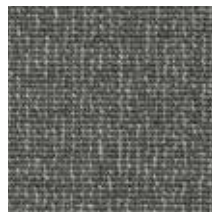
The road
less traveled by.



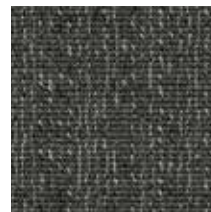
Crushed stones.



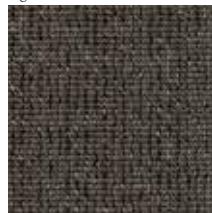
Grind 130



Grind 983



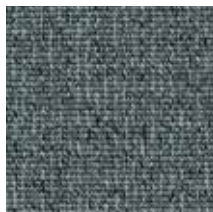
Grind 961



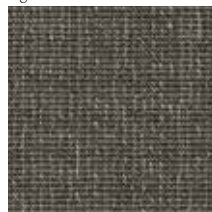
Grind 668



Grind 966



Grind 586



Grind 850







Grind 961

FROM FISHING NETS TO TILES.

As part of our sustainable mission to reduce the Life Cycle Impact of each product, modulyss® decided to join **Healthy Seas®** as an associate partner member.

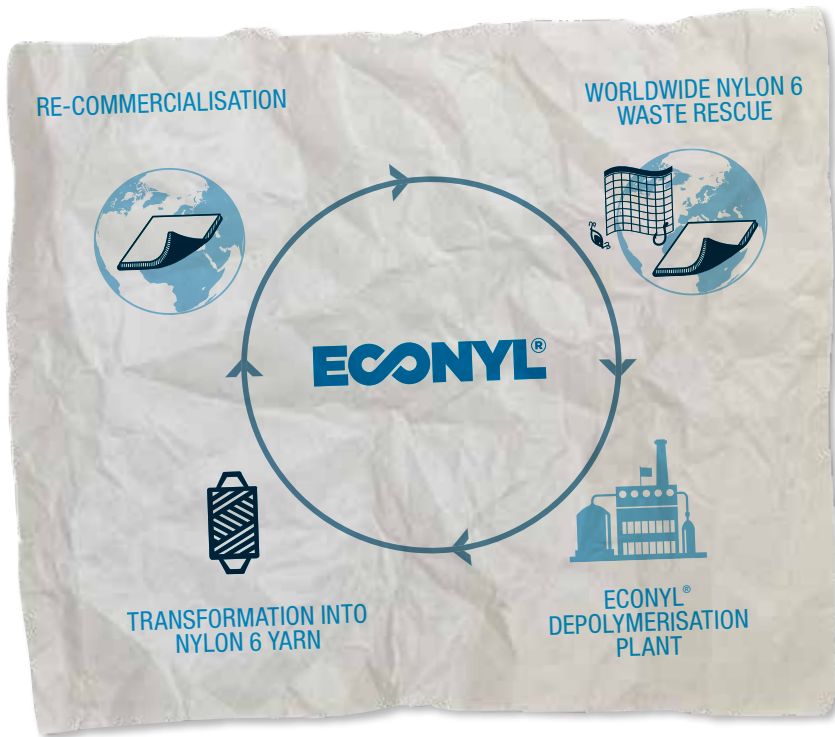
Healthy Seas® was set up to **protect our seas** by diving for abandoned fishing nets (known as ghost nets) that remain in the sea for centuries continuing to catch or injure marine life such as fish, dolphins, turtles and marine birds.

Healthy Seas® not only recovers the fishing nets but makes sure that they get recycled and regenerated into ECONYL® yarn by **Aquafil**, Europe's premier manufacturer of PA 6 carpet fibre.



*Joining Healthy Seas®
as an associate partner member
was a natural decision
for modulyss®*





The ECONYL® Regeneration System is a **closed-loop process** which allows the transformation of nylon waste, such as fishing nets and other discarded materials, into first grade nylon used for the production of sustainable carpet products and other textiles.

modulyss® designed the Handcraft collection, using the high-grade **ECONYL® nylon yarn derived from recovered fishing nets and other waste materials** that are regenerated through the ECONYL® Regeneration System.

*A sustainable solution
for a solid
modulyss® future.*

Pairing the ECONYL® yarn with a **recycled primary and secondary backing** (back2back), is part of the sustainable choices we at modulyss® make every day.

Read all about our sustainable partnerships on www.healthyseas.org, www.econyl.com or www.modulyss.com.



www.modulyss.com