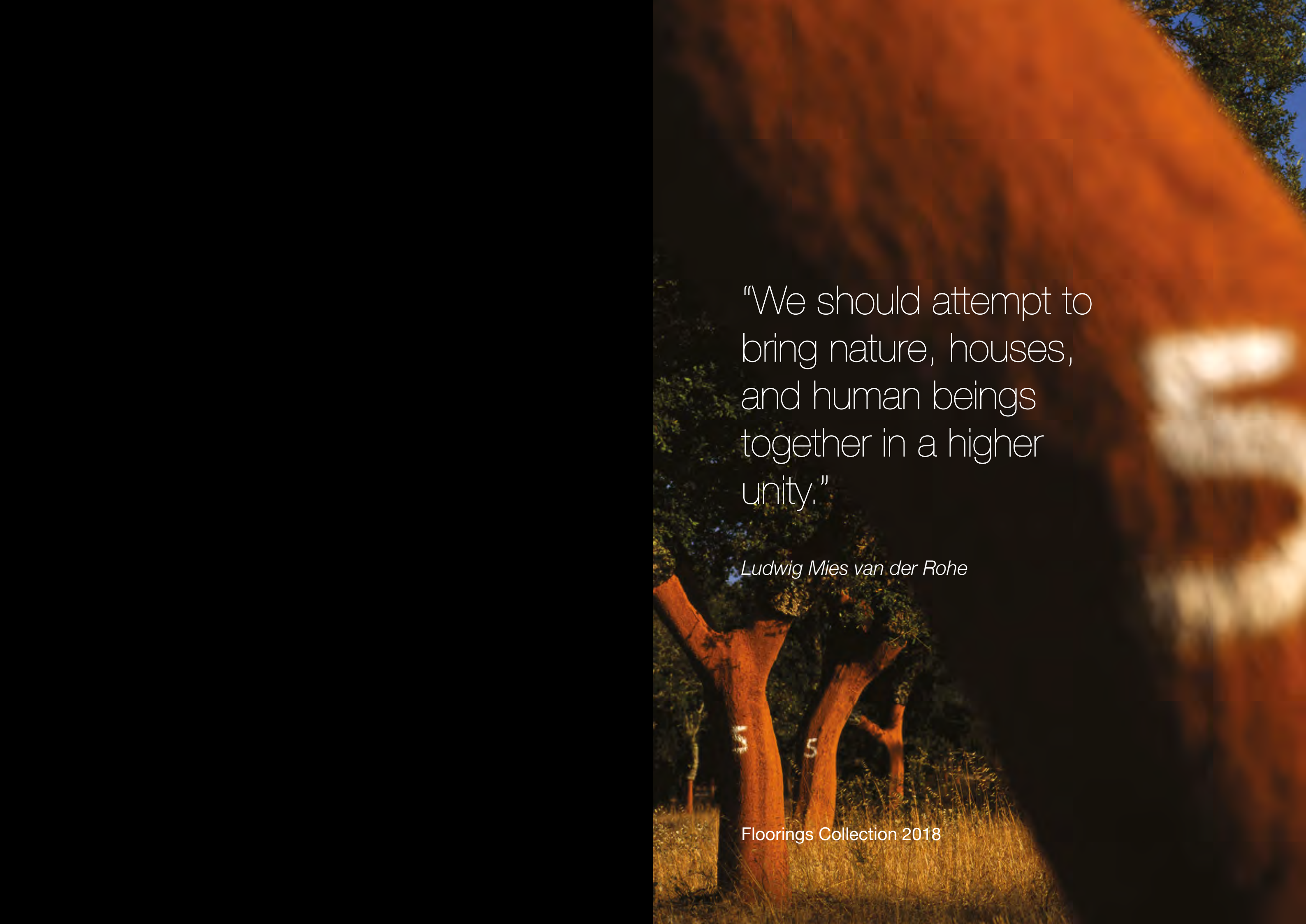


GRANORTE
delivering nature



“We should attempt to
bring nature, houses,
and human beings
together in a higher
unity.”

Ludwig Mies van der Rohe

Floorings Collection 2018



WHO WE ARE

GRANORTE is a Portuguese family company, founded in 1972 to recycle the cork waste from the wine cork stoppers manufacturing industry. From the beginning we have dedicated our attention to product research and development, resulting on innovative production processes and technical excellence.

Our significant know-how in cork allowed us to develop into an expanding producer of technical solutions using cork. Today, GRANORTE is a leading sustainable flooring manufacturer, producer of thrilling environmentally responsible products. One tradition was kept unchanged however: the quiet revolutionary way of promote ongoing, consistent, breakthrough creativity. This innovation culture and teamwork encouraging have been the basis of our success.

Awards

2005 Best Portuguese Company in the area of wood, cork and furniture; "PME Líder", recognizing the company's work as an example of excellence, quality and leadership; 2012 Best SME, Export and Internationalization Awards BES / Jornal de Negócios; iF Design Award 2015; Green Good Design 2015; German Design Award Nominee 2016; House Beautiful Awards 2016: Best Flooring - Silver; BID_16 - Mention; ICONIC AWARDS 2017: Interior Innovation - Best of Best; German Design Award Winner 2018.

Certified

EN ISO 9001; SYSTECODE; FSC® Chain-Of-Custody

Member

Portuguese Cork Association; German Cork Association; Cork Industry Federation; Cork Technology Centre; US Green Building Council; British Standards Institution; Cotec Network of Innovative SME; Global Forest & Trade Network.





WE CARE

GRANORTE recognizes that business leadership carries a responsibility to the environment and the world's forests. We contribute to the development of environmental solutions that conserve, protect and restore forests, supporting responsible forest management practices that both protect biodiversity and ecosystem integrity and result in long-term social and economic benefits to human communities.

We promote responsible business practices at every level of the company. We strive to conduct business ethically, honestly and with sensitivity toward social, cultural, economic and environmental issues. We integrate these core values into every aspect of our business and with our passion we use them to multiply social impact around the world.

As a member of WWF's Global Forest & Trade Network and U.S. Green Building Council, we believe in a more sustainable built environment. We promote green building and commitment to the use of cork and wood from sustainable sources, contributing to give people better, brighter and healthier spaces to live, work and play.

Through the partnership with the non-profit charity organization Habitat for Humanity, GRANORTE is donating cork flooring material to every new home built by HFH in the Europe and Central Asia region. HFH seeks to eliminate poverty housing and homelessness from the world and to make decent shelter a matter of conscience and action worldwide.





WHY CORK

Cork is the outer bark of the cork oak tree, which grows mainly in the Mediterranean region of the world. This tree has a life span of about 200 years. Each cork tree must be 20 to 25 years old before it can provide its first harvest of cork. After extracting the cork a new layer starts generating and nine years have to pass until a new harvest can take place. The cork harvesting is made in a sustainable manner and does not harm the tree which is never cut down or removed.

With the increasing concern for the environment, cork oak remains the only tree whose bark can regenerate itself after harvest leaving the tree unharmed. Furthermore, the cork oak tree has the remarkable capacity to retain carbon and a harvested cork tree fixates almost five times more carbon. These exceptional characteristics make cork a naturally sustainable product and its use contributes to the preservation of a unique habitat in the world.

Cork is the perfect environmentally friendly material and the ideal option when looking for floor and wall coverings that offer a naturally sustainable alternative. It is also amazingly versatile, and designers can explore the material in a surprisingly creative fashion. By altering colour and the way the cork is 'laid up' it becomes possible to create a whole range of textures and visual effects, without upsetting performance and maintaining cork's natural properties.

With over 40 million natural "cushion cells" per cubic centimetre, cork is a natural sound and thermal insulator, comfortable underfoot, quiet, warm and pleasant to the touch.

Cork floors do not absorb dust and are resistant to bacteria and fungus. They do not cause allergies nor pose a risk to asthma sufferers and have very low volatile organic compounds (VOC) emissions.



HOW WE DO IT

Our philosophy is to challenge what has become habitual, and to never be satisfied with anything less than the best. We seek perfection each and every day and ensure that our products meet all international quality requirements and technical specifications. Our aim is to fascinate people, designing and creating stunning cork products that capture the imagination and inspire beautiful and eco-friendly interiors. Using only the best raw materials and state-of-the-art technology, GRANORTE offers a diverse range of products for both residential and commercial environments, delivering eye-catching styles as well as superb quality.

| | | | |
|---------------------------------------------------------------------------------------|-----------------------------------------------------------------------------------------------------------------------------------------------------------------------------------------------------------------------------------------------------------------------------------------------------------|---------------------------------------------------------------------------------------|-------------------------------------------------------------------------------------------------------------------------------------------------------------------------------------------------------------|
| <p>WEARTOP high performance coating</p> | <p>High performance and low VOC finish with very high wear, impact, scratch and slip resistance.</p> | <p>HCA2K hybrid ceramic hotcoating</p> | <p>HotCoating® PUR and waterbased finish with very high wear, impact and chemical resistance with a natural look-and-feel.</p> |
| <p>AQUA2K+ 2K waterborne finish</p> | <p>Very low emissions 2-component waterborne finish, based on polyurethane resins with very high final hardness, great elasticity and excellent chemical resistance.</p> | <p>HDFCORE+ moisture resistant HDF</p> | <p>Low swelling and high moisture resistance High Density Fibreboard (HDF) CARB 2 and Lacey Act compliant.</p> |
| <p>UNICLIC click installation system</p> | <p>All floating floors from GRANORTE use the industry's leading UNICLIC® profile.</p> | <p>JOINT SHIELD edge sealing technology</p> | <p>Edge impregnation system for improved moisture resistance and superior joint protection.</p> |
| <p>MICRO BEVEL 4 edges micro-beveled</p> | <p>Micro-bevelled edge aesthetic enhancement.</p> | <p>AGGLOPURE no added formaldehyde</p> | <p>Formaldehyde-free, PVC-free and phthalates-free cork agglomeration technology.</p> |
| <p>HDDP high definition digital print</p> | <p>Proprietary HDDP technology that delivers unrivalled digital print quality using high native resolution together with variable dot printing and exclusive printing techniques.</p> | <p>AWS authentic wood structure</p> | <p>Production technology that finely emboss wood structure making floors look and feel natural.</p> |
|  | <p>GREENGUARD GOLD Certification assures that strict chemical emissions limits are met, considers safety factors to account for sensitive individuals (such as children and the elderly), and ensures that a product is acceptable for use in environments such as schools and healthcare facilities.</p> |  | <p>German Cork Association Quality mark that ensures product quality, eco-friendliness, sustainability and the meeting of technical and chemical European requirements in terms of pollutant emissions.</p> |
|  | <p>Information representing indoor air emissions of volatile substances presenting a risk of inhalation toxicity, on a scale ranging from Class C (high emissions) to A+ (very low emissions), according to the French decree for the labelling of construction products.</p> |  | <p>International symbol used to identify products made with genuine cork.</p> |
|  | <p>Exclusive Microban® antibacterial protection embedded in the agglomerated cork.</p> |  | <p>European certification for safety and energy-saving performance.</p> |

HOME NATURALY



Champagner White

Traditional Cork Floating Floors

naturals

20 | 40
910 x 300 x 10,5 mm

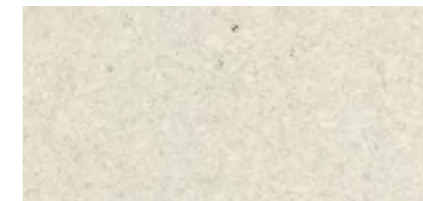
43
1164 x 194 x 10,5 mm



Standard 20 248 00 | 40 248 00 | 43 248 00



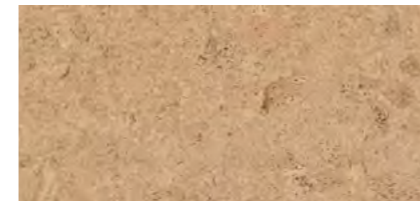
Standard Cream 20 210 11 | 40 210 11 | 43 210 11



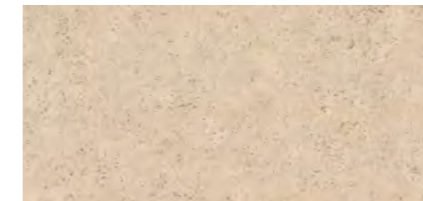
Standard White 20 210 12 | 40 210 12 | 43 210 12



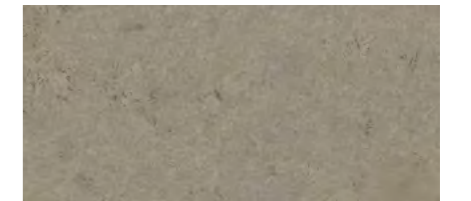
Champagner 20 040 00 | 40 040 00 | 43 040 00



Champagner Sand 20 039 14 | 40 039 14 | 43 039 14



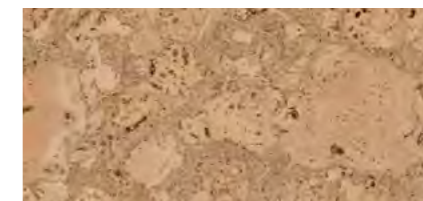
Champagner White 20 039 16 | 40 039 16 | 43 039 16



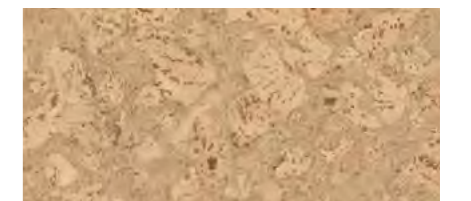
Champagner Grey 20 039 43 | 40 039 43 | 43 039 43



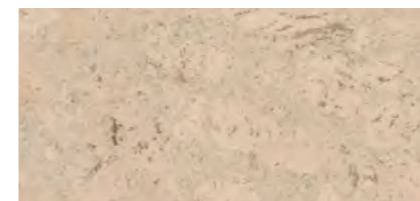
Stark 20 150 00 | 40 150 00 | 43 150 00



Twist 20 901 00 | 40 901 00 | 43 901 00



Twist Sand 20 901 14 | 40 901 14 | 43 901 14



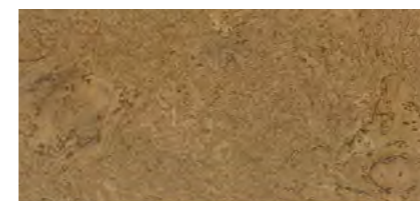
Twist White 20 901 16 | 40 901 16 | 43 901 16



Twist Brown 20 901 21 | 40 901 21 | 43 901 21



Twist Grey 20 901 51 | 40 901 51 | 43 901 51



Twist Olive 20 901 29 | 40 901 29 | 43 901 29



Primus 20 179 00 | 40 179 00 | 43 179 00



Primus Sand 20 179 14 | 40 179 14 | 43 179 14

WARM RUSTIC AESTHETIC



Linea Grey

Traditional Cork Floating Floors

naturals



Primus Cream 20 179 11 | 40 179 11 | 43 179 11



River 20 131 00 | 40 131 00 | 43 131 00



Element 20 801 00 | 40 801 00 | 43 801 00



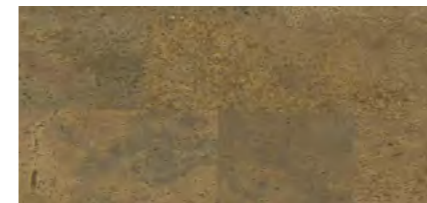
Element Rustic Cream 20 111 11 | 40 111 11 | 43 111 11



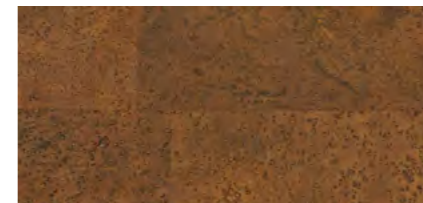
Element Rustic Silver 20 111 51 | 40 111 51 | 43 111 51



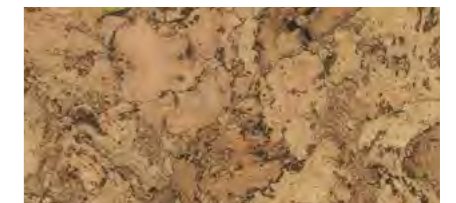
Element Rustic Khaki 20 111 44 | 40 111 44 | 43 111 44



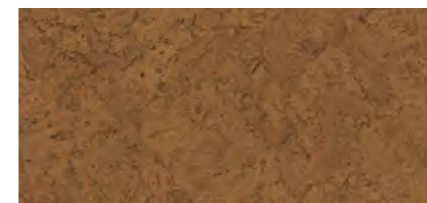
Element Rustic Olive 20 111 29 | 40 111 29 | 43 111 29



Element Rustic Brown 20 111 21 | 40 111 21 | 43 111 21



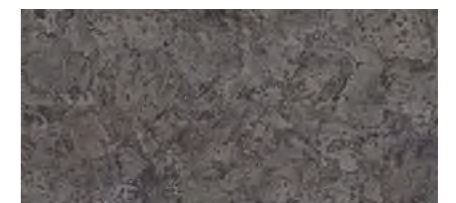
Country 20 241 00 | 40 241 00 | 43 241 00



Country Brown 20 241 26 | 40 241 26 | 43 241 26



Country Olive 20 241 29 | 40 241 29 | 43 241 29



Country Slate 20 241 46 | 40 241 46 | 43 241 46



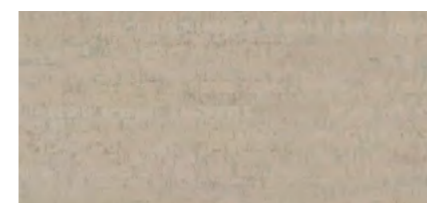
Expression 20 291 00 | 40 291 00 | 43 291 00



Expression Sand 20 291 14 | 40 291 14 | 43 291 14



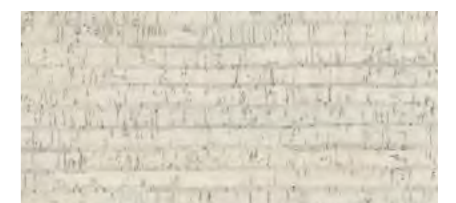
Expression Brown 20 291 26 | 40 291 26 | 43 291 26



Linea Grey 20 121 48 | 40 121 48 | 43 121 48



Split 20 124 00 | 40 124 00 | 43 124 00

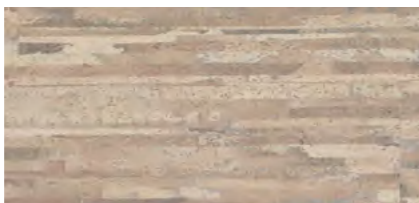


Split White 20 124 12 | 40 124 12 | 43 124 12

FSC® certified products are available upon request.



Contour 20 647 00 | 40 647 00 | 43 647 00



Contour Cream 20 647 11 | 40 647 11 | 43 647 11



Contour Brown 20 647 21 | 40 647 21 | 43 647 21



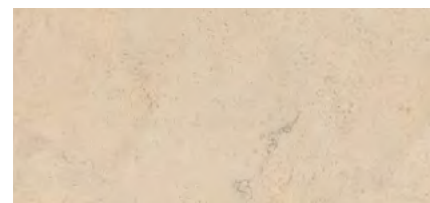
Nobel Rustic 20 625 00 | 40 625 00 | 43 625 00



Nobel 20 191 00 | 40 191 00 | 43 191 00



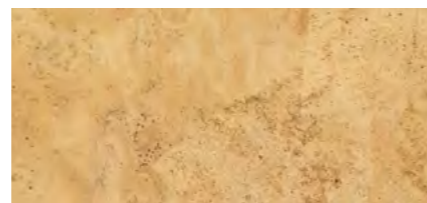
Nobel Select 20 191 82 | 40 191 82 | 43 191 82



Nobel White 20 191 10 | 40 191 10 | 43 191 10



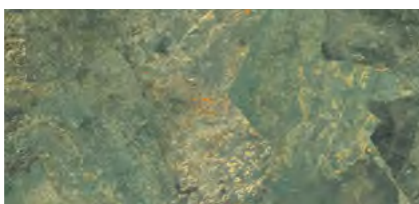
Nobel Brown 20 191 21 | 40 191 21 | 43 191 21



Amber 20 614 82 | 40 614 82 | 43 614 82



Jeans 20 612 82 | 40 612 82 | 43 612 82



Midnight 20 615 00 | 40 615 00 | 43 615 00



CALM
ATMOS
PHERE

TRENDY COLOURS








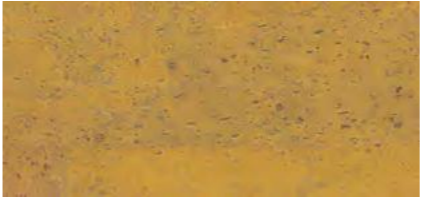




Pearl & Slate Grey

Coloured Cork Floating Floors

recolour

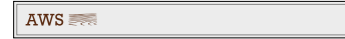
216
1164 x 300 x 10,5 mm

| | | |
|---------------------------------------------------------------------------------------|---------------------------------------------------------------------------------------|---------------------------------------------------------------------------------------|
| |  |  |
| | Pearl 216 111 018 | Ash 216 111 048 |
|  |  |  |
| Slate Grey 216 111 052 | Smoke 216 111 042 | Mocha 216 111 027 |
|  |  |  |
| Beton 216 111 053 | Dove Blue 216 111 620 | Wheat 216 111 032 |
|  |  |  |
| Pecan 216 111 201 | Blush 216 111 618 | Lilac 216 111 617 |
|  |  |  |
| Olive 216 111 613 | Forest 216 111 612 | Navy Blue 216 111 619 |
|  |  |  |
| Saffron 216 111 604 | Terracotta 216 111 616 | Scarlet 216 111 608 |

FSC® certified products are available upon request.

vita classic

Digital Print Cork Floors



1746 x 194 x 13,5 mm



1164 x 194 x 10,5 mm



900 x 150 x 4 mm



Oak Tweed 46 001 34 | 146 001 34 | 162 001 34



Oak Breeze 46 001 35 | 146 001 35 | 162 001 35



Oak Tan 46 001 36 | 146 001 36 | 162 001 36



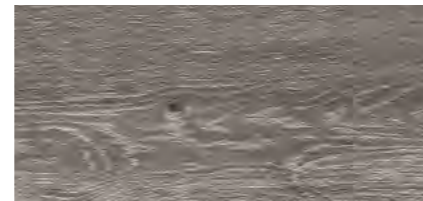
Oak Century 46 001 37 | 146 001 37 | 162 001 37



Oak Lodge 46 001 38 | 146 001 38 | 162 001 38



Oak Snow 46 001 15 | 146 001 15 | 162 001 15



Oak Smoke 46 001 16 | 146 001 16 | 162 001 16



Oak Vanilla 46 001 17 | 146 001 17 | 162 001 17



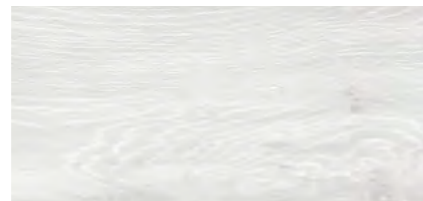
Oak Bisque 46 001 18 | 146 001 18 | 162 001 18



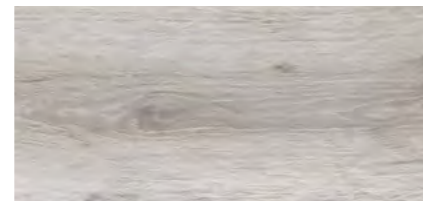
Oak Caramel 46 001 19 | 146 001 19 | 162 001 19



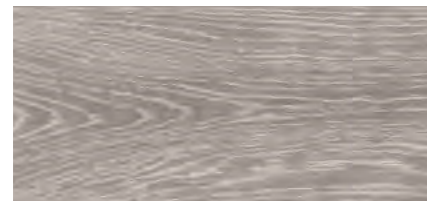
Oak Rust 46 001 20 | 146 001 20 | 162 001 20



Oak Artic 46 001 09 | 146 001 09 | 162 001 09



Oak Greystone 46 001 10 | 146 001 10 | 162 001 10



Oak Platinum 46 001 11 | 146 001 11 | 162 001 11



Oak Oasis 46 001 12 | 146 001 12 | 162 001 12



Oak Seashell 46 001 13 | 146 001 13 | 162 001 13



Oak Breeze

LIVING NATURAL



Oak Caramel

Digital Print Cork Floors

vita classic



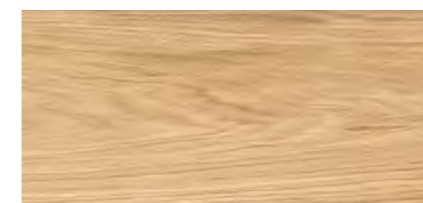
Oak Moccasin 46 001 14 | 146 001 14 | 162 001 14



Oak Java 46 001 04 | 146 001 04 | 162 001 04



Oak Camel 46 001 03 | 146 001 03 | 162 001 03



Oak Blond 46 001 02 | 146 001 02 | 162 001 02



Oak Antique 46 001 01 | 146 001 01 | 162 001 01



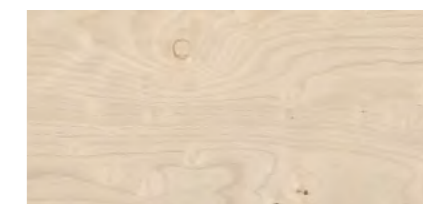
Oak Siena 46 001 07 | 146 001 07 | 162 001 07



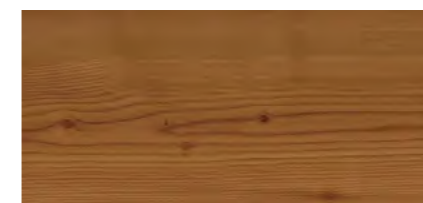
Oak Pearl 46 001 05 | 146 001 05 | 162 001 05



Oak Blanc 46 001 06 | 146 001 06 | 162 001 06



Apple Birch 46 005 01 | 146 005 01 | 162 005 01



Larch Sierra 46 002 04 | 146 002 04 | 162 002 04



Larch Spice 46 002 01 | 146 002 01 | 162 002 01



Larch Country 46 002 02 | 146 002 02 | 162 002 02



Larch Frost 46 002 03 | 146 002 03 | 162 002 03



Ash Sand 46 003 01 | 146 003 01 | 162 003 01



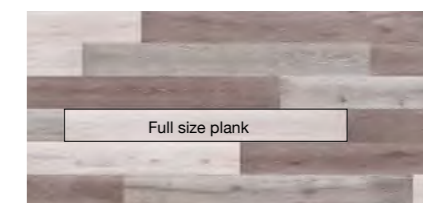
Ash Vintage 3-Strip 46 303 03 | 146 303 03 | 162 303 03



Classic Mix 46 001 50 | 146 001 50 | 162 001 50



Urban Mix 46 001 51 | 146 001 51 | 162 001 51



Nordic Mix 46 001 52 | 146 001 52 | 162 001 52


LEADING CREATIVITY

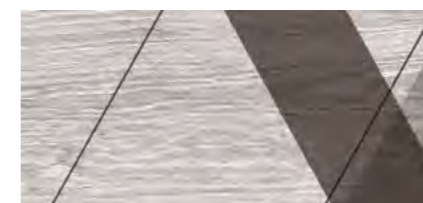


Wave Brown

Design Printed Cork Floating Floors

vita decor flow

153 AWS 
1164 x 194 x 10,5 mm



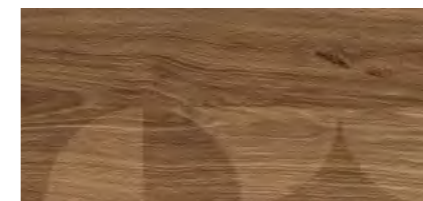
Trace Grey 153 001 01



Trace Classic 153 001 02



Wave Sand 153 002 01



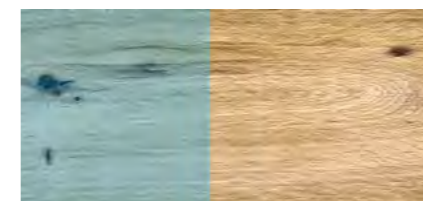
Wave Brown 153 002 03



Flower White 153 003 01



Flower Brown 153 003 02



Glow Blue 153 006 01



Glow Red 153 006 03

53

910 x 300 x 10,5 mm



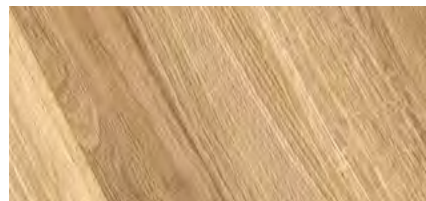
Cut Grey 53 008 02



Cut Caramel 53 008 01



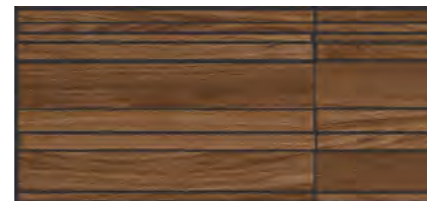
Chevron LR Urban 53 009 02



Chevron LR Classic 53 009 01



Strip Natural 53 010 01



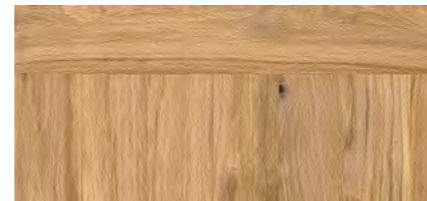
Strip Tawny 53 010 02



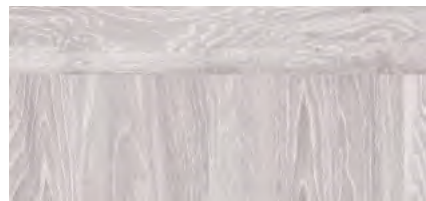
Cube Grey 53 011 02



Cube Classic 53 011 01



Slice Natural 53 001 01



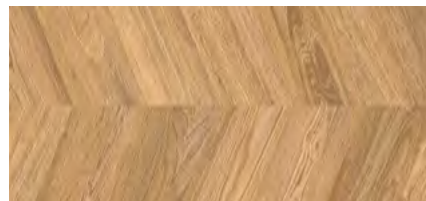
Slice Artic 53 001 02



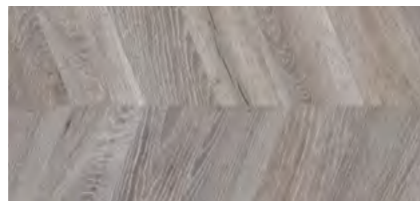
Duo Classic 53 002 02



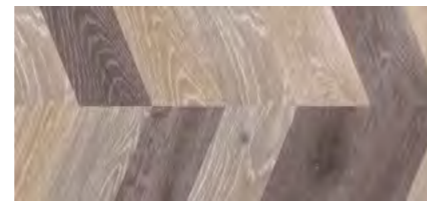
Duo Urban 53 002 03



Chevron Classic 53 004 01



Chevron Grey 53 004 02



Chevron Mix 53 004 03



Block 53 005 01



Foursquare Natural 53 006 01



Foursquare Grey 53 006 02



Chevron LR Classic

RI CH TEX TURE



Design Printed Cork Floating Floors

vita decor retile

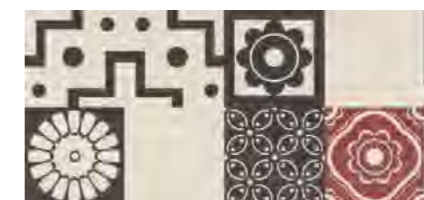
53
910 x 300 x 10,5 mm



Retile Bold 53 051 01



Retile Cool 53 051 02



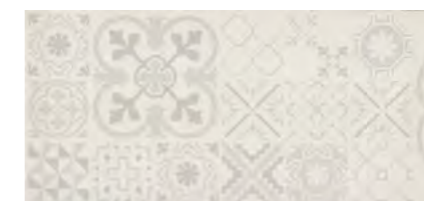
Retile R&B 53 053 01



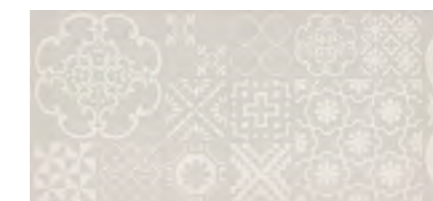
Retile Blue 53 050 01



Retile Brown 53 050 02



Retile Grey 53 050 03



Retile Silver 53 050 04



Retile Lavender 53 052 01



Retile Myosotis 53 052 02



Retile Tisane 53 052 03

Retile Grey

FSC® certified products are available upon request.

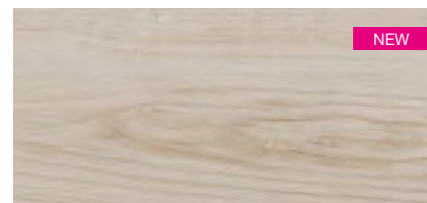
kenko

PVC-Free Multilayer Floating Floors

29

1164 x 194 x 9 mm

HEAL
THY
CHO
ICE



NEW

Ivory

29 024 08



NEW

Ashland

29 024 09



NEW

Satin

29 008 39



NEW

Amber

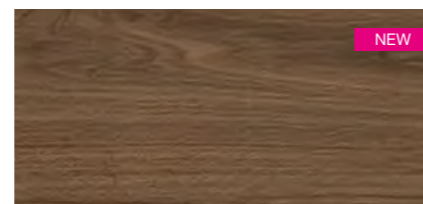
29 023 54



NEW

Saddle

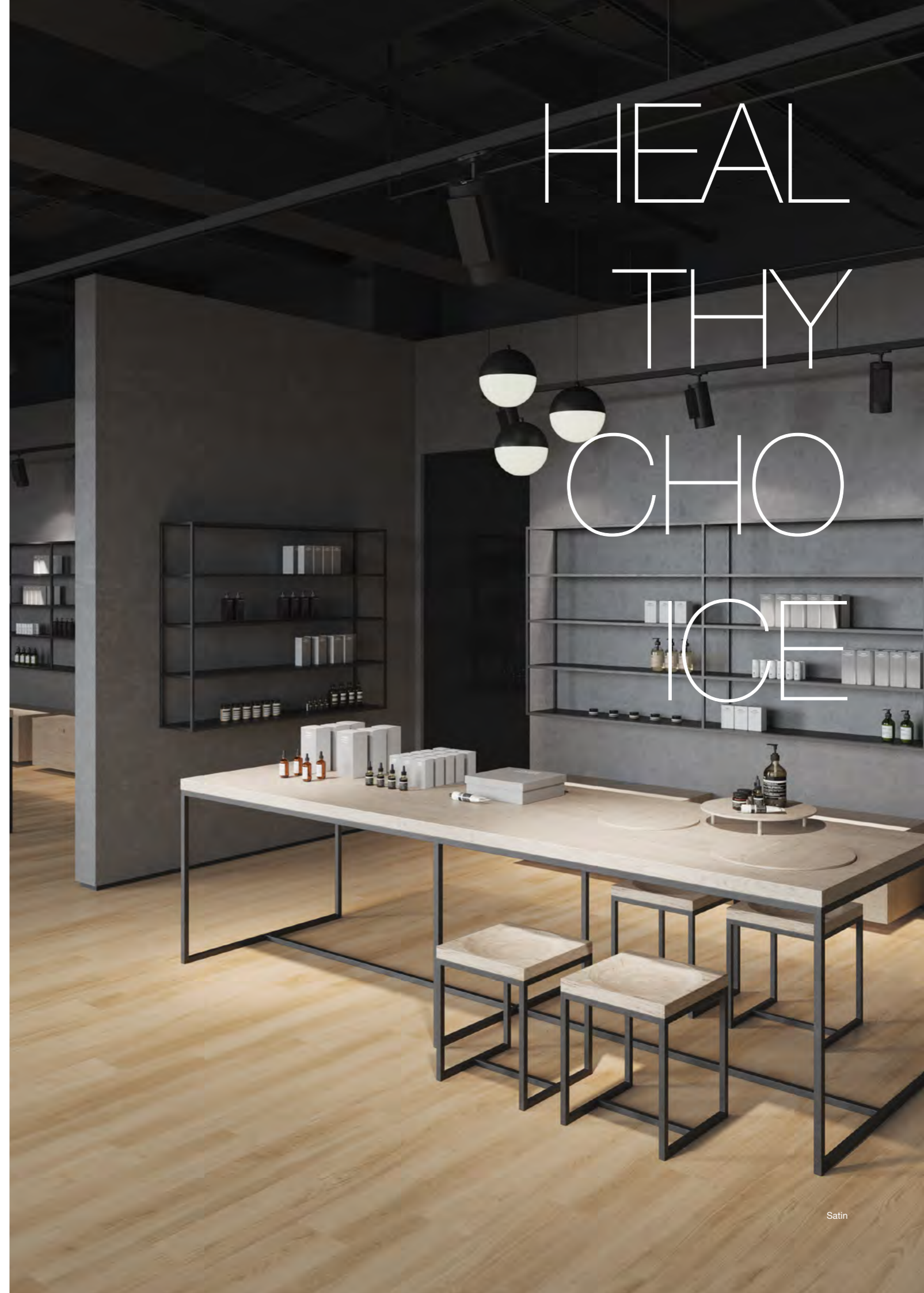
29 004 96



NEW

Chestnut

29 008 40



Satin

VERS ATILE DES IGN



Artisan

Vinyl & Cork Floating Floors

vinylcork

36
1164 x 194 x 10,5 mm

37
910 x 300 x 10,5 mm

237
1164 x 300 x 10,5 mm



Woodland 36 050 49



Rodeo 36 050 53



Country 36 050 12



Nuance 36 050 14



Barn 36 081 17



Artisan 36 054 61



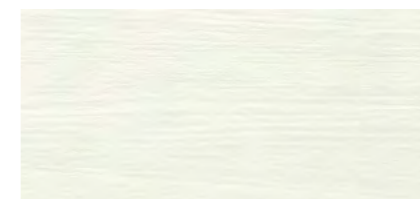
Polar 36 013 31



Whisper 36 050 54



Coastline 36 050 17



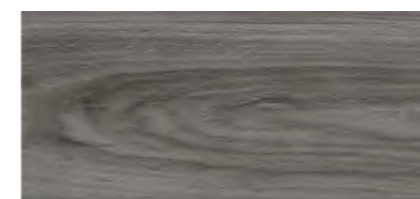
Alaska 36 050 81



Seaside 36 081 16



Spark 36 015 18



Dove 36 031 52



Raven 36 050 72



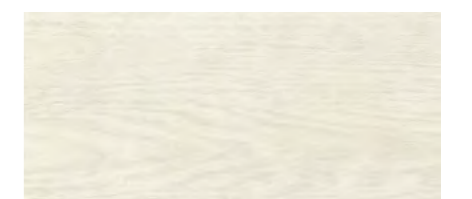
Almond 36 050 48



Iceland 36 081 33



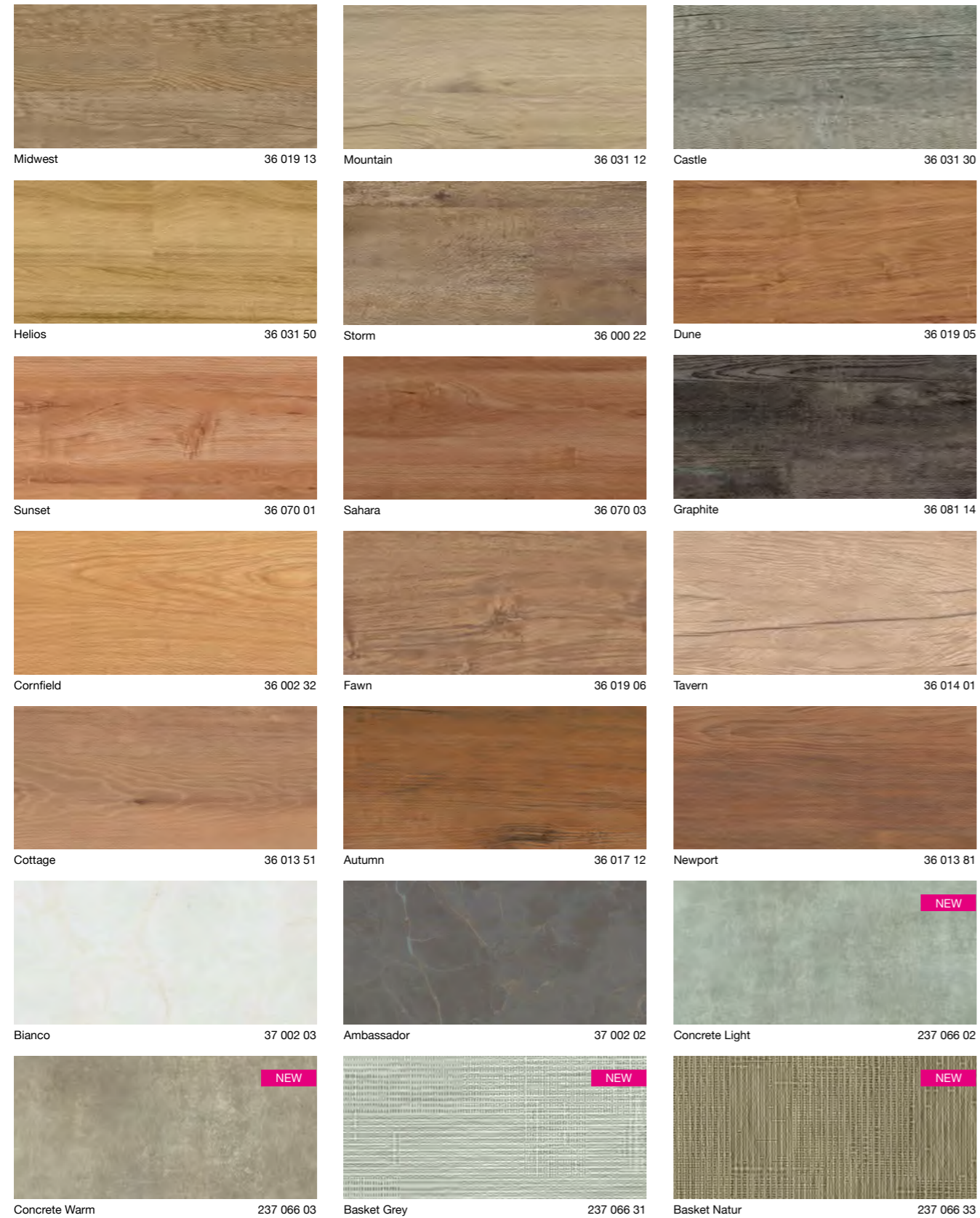
Galleon 36 017 41



Pearl 36 000 05



Navajo 36 031 51

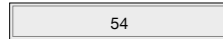


FO
RM &
FUNC
TION



corium

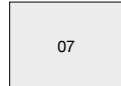
Leather & Cork Floors



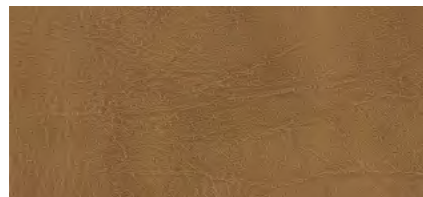
1164 x 194 x 10,5 mm



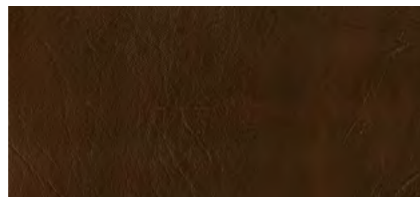
610 x 380 x 10,5 mm



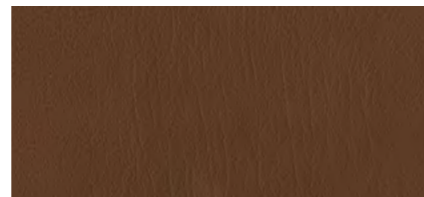
600 x 450 x 4 mm



Calabria Cannella 07 001 04 | 54 001 04 | 56 001 04



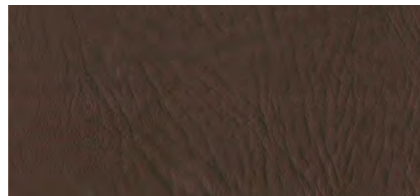
Calabria Cacao 07 001 01 | 54 001 01 | 56 001 01



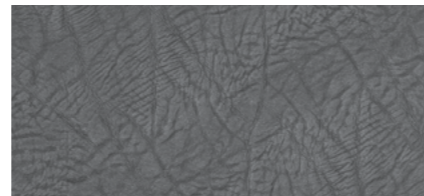
Calabria Tan 07 014 30 | 54 014 30 | 56 014 30



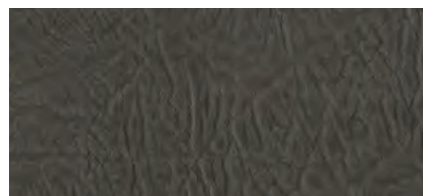
Umbria Seppia 07 007 11 | 54 007 11 | 56 007 11



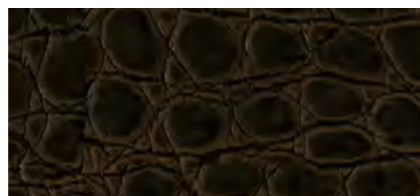
Umbria Castano 07 010 14 | 54 010 14 | 56 010 14



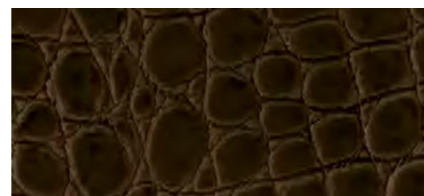
Umbria Ardesia 07 010 23 | 54 010 23 | 56 010 23



Umbria Grigio Scuro 07 010 18 | 54 010 18 | 56 010 18



Veneto Bistrot 07 002 05 | 54 002 05 | 56 002 05



Veneto Borgogna 07 002 06 | 54 002 06 | 56 002 06



Veneto Seppia 07 002 11 | 54 002 11 | 56 002 11

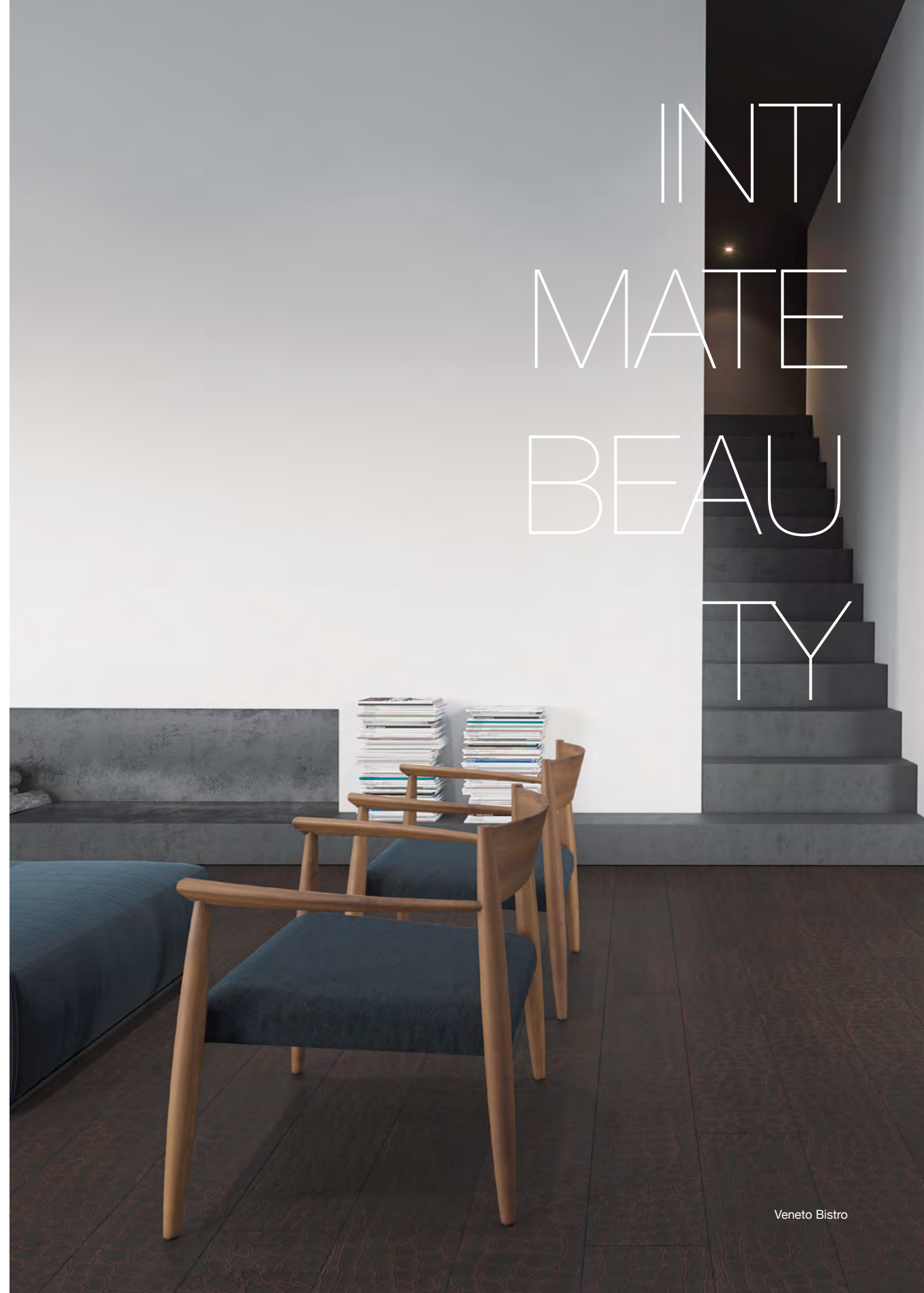


Lombardia Marrone 07 011 29 | 54 011 29 | 56 011 29



Lombardia Antico 07 005 09 | 54 005 09 | 56 005 09

INTIMATE
BEAUTY



Veneto Bistrot

WARM & PLEASANT SANIT



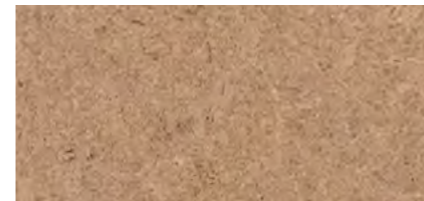
Cork Floor Tiles

tradition

72
600 x 300 x 4 mm



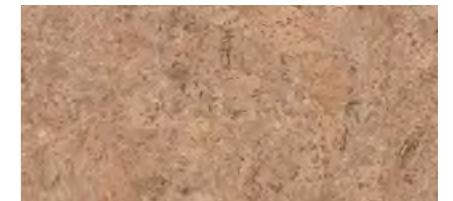
Standard 72 214 00



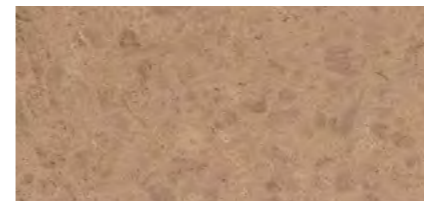
Mineral 72 220 00



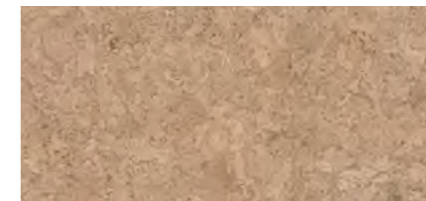
Mystic 72 440 00



Champagner 72 040 00



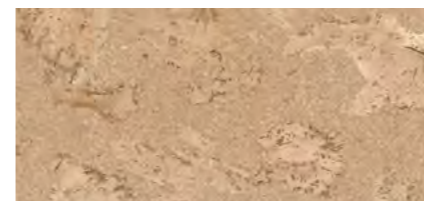
Gem 72 200 00



Classic 72 101 00



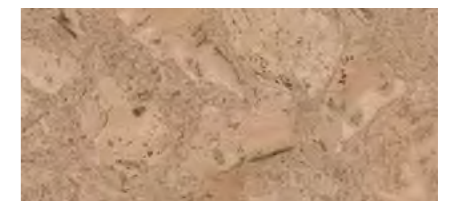
Rondo 72 920 00



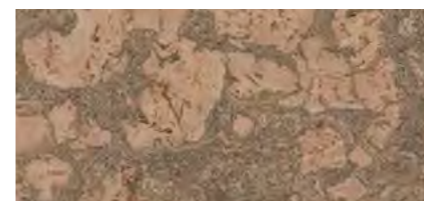
Arabesque 72 910 00



Stark 72 150 00



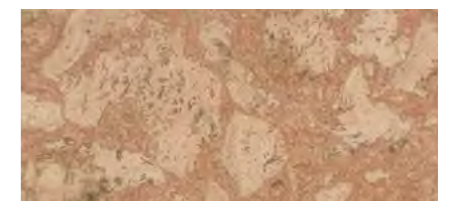
Twist 72 901 00



Twist Black 72 901 93



Twist Red 72 901 91



Twist Orange 72 901 94



Twist Green 72 901 92



Forest 72 700 00



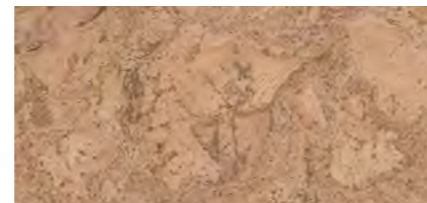
Castello 72 241 00



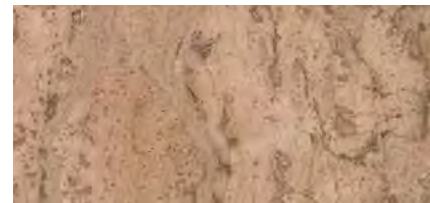
River 72 131 00



Canyon 72 155 00



Creek 72 137 00



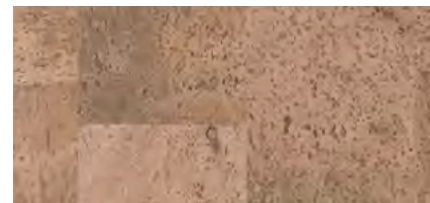
Primus 72 179 00



Diagonal 72 796 00



Element Wave 72 280 00



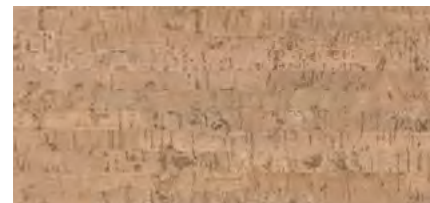
Element Rustic 72 110 00



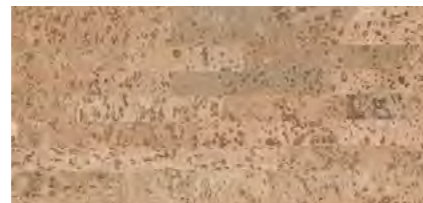
Element 72 800 00



Element Schmal 72 231 00



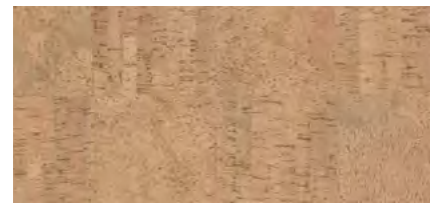
Parallel 72 121 00



Horizon 72 221 00



Split 72 123 00



Blend 72 128 00



Segment 72 250 00



Kwadraat 72 160 00



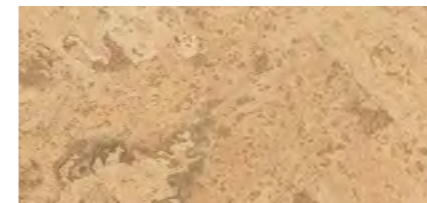
Expression 72 290 00



Fineline 72 310 00



Fineline Dark 72 301 00



Nobel Rustic 72 625 00



Nobel 72 191 00



Nobel Select 72 191 82



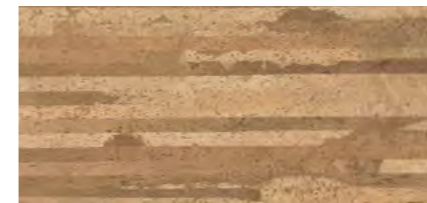
Safari 72 622 00



Zebra 72 624 00



String 72 644 00



Contour 72 646 00



Mesh 72 649 00



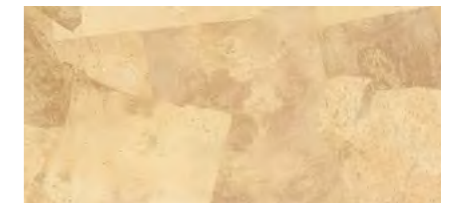
Trek 72 656 00



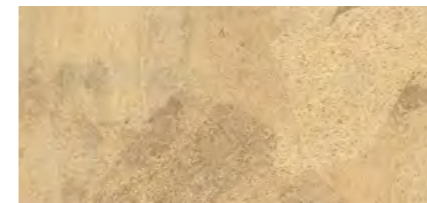
Green 72 611 82



Jeans 72 612 82



Amber 72 614 82



Terra 72 613 82



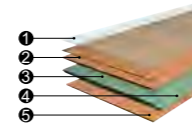
Midnight 72 615 00

technical data

| | | | Naturals | Recolour | Vita Classic Premium | Vita Classic Elite Vita Decor Flow | Vita Decor Trim Vita Decor Retile | Kenko | Vinylcork | Corium | Vita Glue-Down | Decorium | Tradition |
|----------------------------------|-------------------------|---------------------|-------------------------------------|-------------------------------------|-------------------------------------|---------------------------------------|--------------------------------------|-------------------------------------|--------------------------------------|-------------------------------------|-------------------------------------|------------------------------------|------------------------------------|
| Level of use | Standard | Unit | | | | | | | | | | | |
| Residential | EN ISO 10874 | Class | 23 | 23 | 23 | 23 | 23 | 23 | 23 | 23 | 23 | 23 | 23 |
| Commercial | EN ISO 10874 | Class | 32 | 32 | 32 | 32 | 32 | 32 | 32 | 31 | 32 | 31 | 31 |
| Finish | | | WEARTOP - HCA2K | HCA2K | HCA2K | HCA2K | WEARTOP | EB-COATING | MICROCERAMIC | AQUA2K+ | HCA2K | AQUA2K+ | NATURAL |
| General Properties | Standard | Unit | | | | | | | | | | | |
| Dimensions | EN ISO 24342 / ISO 9366 | mm | 910 x 300 1164 x 194 | 1164 x 300 | 1746 x 194 | 1164 x 194 | 910 x 300 | 1164 x 194 | 1164 x 194 910 x 300 / 1164 x 300 | 1164 x 194 610 x 380 | 900 x 150 | 600 x 450 | 600 x 300 |
| Thickness | EN ISO 24346 | mm | 10.5 | 10.5 | 13.5 | 10.5 | 10.5 | 9 | 10.5 | 10.5 | 4 | 4 | 4 |
| Squareness | EN ISO 24342 / ISO 9366 | mm | < 0.3 | < 0.3 | < 0.3 | < 0.3 | < 0.3 | < 0.3 | < 0.3 | < 0.3 | < 0.4 | < 0.4 | < 0.4 |
| Straightness | EN ISO 24342 / ISO 9366 | mm | < 0.2 | < 0.2 | < 0.2 | < 0.2 | < 0.2 | < 0.2 | < 0.2 | < 0.2 | < 0.3 | < 0.2 | < 0.25 |
| Apparent density | ISO 3850 | Kg/m ³ | 750 | 750 | 720 | 750 | 750 | 800 | 910 | 820 | > 600 | > 800 | > 500 |
| Mass per unit area | EN ISO 23997 | g/m ² | 7900 | 7900 | 9700 | 7900 | 7900 | 7400 | 9600 | 8600 | 2600 | 3400 | 2000 |
| Flatness of the panel | EN 14085 | | | | | | | | | | | | |
| Length concave/convex | | % | < 0.1 / 0.5 | < 0.1 / 0.5 | < 0.1 / 0.5 | < 0.1 / 0.5 | < 0.1 / 0.5 | < 0.1 / 0.5 | < 0.1 / 0.5 | < 0.1 / 0.5 | | | |
| Width concave/convex | | % | < 0.05 / 0.1 | < 0.05 / 0.1 | < 0.05 / 0.1 | < 0.05 / 0.1 | < 0.05 / 0.1 | < 0.05 / 0.1 | < 0.05 / 0.1 | < 0.05 / 0.1 | | | |
| Opening between panels | EN 14085 | mm | < 0.1 | < 0.1 | < 0.1 | < 0.1 | < 0.1 | < 0.1 | < 0.1 | < 0.1 | | | |
| Height difference between panels | EN 14085 | mm | < 0.15 | < 0.15 | < 0.15 | < 0.15 | < 0.15 | < 0.15 | < 0.15 | < 0.15 | | | |
| Residual indentation | EN ISO 24343-1 | mm | < 0.25 | < 0.25 | < 0.25 | < 0.25 | < 0.25 | < 0.25 | < 0.25 | < 0.25 | < 0.3 | < 0.3 | < 0.3 |
| Dimensional variation | EN 14085 / ISO 23999 | % | < 0.4 | < 0.4 | < 0.4 | < 0.4 | < 0.4 | < 0.4 | < 0.4 | < 0.4 | < 0.4 | < 0.4 | < 0.4 |
| Moisture Content | EN 12105 | % | | | | | | | | | ≤ 6 | ≤ 6 | ≤ 6 |
| Curling | EN ISO 23999 | mm | | | | | | | | | ≤ 6 | < 6 | < 6 |
| Wear resistance | EN 14354 | Class | WR3 | WR3 | WR3 | WR3 | WR3 | WR3 | | WR2 | WR3 | WR2 | |
| Locking strength Long / Short | ISO 24334 | kN/m | >3 / >4 | >3 / >4 | >3 / >4 | >3 / >4 | >3 / >4 | >3 / >4 | >3 / >4 | >3 / >4 | | | |
| Swelling | ISO 24336 | % | < 18 | < 18 | < 18 | < 18 | < 18 | < 18 | < 18 | < 18 | | | |
| Safety Properties | Standard | Unit | | | | | | | | | | | |
| Reaction to fire | EN 13501-1 | Class | 20-Dfl-s1; 40/43-Cfl-s1 | Cfl-s1 | Cfl-s1 | Cfl-s1 | Bfl-s1 | Dfl-s1 | Bfl-s1 | Dfl-s1 | Cfl-s1 | Cfl-s1 | Bfl-s1 |
| Formaldehyde emission | EN 717-2 | Class | E1 | E1 | E1 | E1 | E1 | E1 | E1 | E1 | | | |
| Slip resistance | EN 14041 | Class | DS | DS | DS | DS | DS | DS | DS | DS | DS | DS | DS |
| Sliding coefficient | EN 13893 | Coeff. | > 0.3 | > 0.3 | > 0.3 | > 0.3 | > 0.3 | > 0.3 | > 0.3 | > 0.3 | > 0.3 | > 0.3 | > 0.3 |
| Additional Properties | Standard | Unit | | | | | | | | | | | |
| Thermal resistance | EN 12667 | m ² .K/W | 0.10 | 0.10 | 0.12 | 0.10 | 0.10 | 0.09 | 0.09 | 0.09 | 0.05 | 0.06 | 0.05 |
| Thermal conductivity | EN 12667 | W/m.K | 0.11 | 0.11 | 0.11 | 0.11 | 0.11 | 0.11 | 0.11 | 0.11 | 0.09 | 0.09 | 0.09 |
| Impact noise reduction | EN ISO 10140-3 | dB | 19 | 19 | 18 | 18 | 19 | 17 | 17 | 17 | 14 | 14 | 14 |
| Light fastness | EN ISO 105-B02 | blue scale | 5 | 5 | 6 | 6 | 6 | 6 | 6 | 6 | 6 | 6 | 5 |
| Scratch resistance | EN 438-2 | Scale | Rating 2 | Rating 2 | Rating 2 | Rating 2 | Rating 2 | Rating 2 | Rating 2 | Rating 2 | Rating 2 | Rating 2 | Rating 2 |
| Impact resistance (small ball) | EN 438-2 | N | > 40 | > 40 | > 40 | > 40 | > 40 | > 40 | > 40 | > 40 | > 40 | > 40 | > 40 |
| Other Features | | | | | | | | | | | | | |
| Installation system | | | UNICLIC® | UNICLIC® | UNICLIC® | UNICLIC® | UNICLIC® | UNICLIC® | UNICLIC® | UNICLIC® | Glue-down | Glue-down | Glue-down |
| FSC® certification | | | FSC® certified available on request | FSC® certified available on request | FSC® certified | FSC® certified available on request | FSC® certified available on request | FSC® certified available on request | FSC® certified available on request | FSC® certified available on request | | | |
| VOC Emissions Certifications | | | Greenguard Gold Kork-Logo A+ | Greenguard Gold Kork-Logo A+ | Greenguard Gold Kork-Logo A+ | Greenguard Gold Kork-Logo A+ | Greenguard Gold Kork-Logo A+ | | Greenguard Gold | Greenguard Gold | Greenguard Gold Kork-Logo A+ | Greenguard Gold | Greenguard Gold Kork-Logo A+ |
| Antibacterial protection | | | Microban® | Microban® | Microban® | Microban® | Microban® | Microban® | Microban® | Microban® | | | |
| Wear through Warranty | | | 15 Y Residential 5 Y Commercial | 15 Y Residential 5 Y Commercial | 20 Y Residential 10 Y Commercial | 20 Y Residential 10 Y Commercial | 15 Y Residential 5 Y Commercial | 15 Y Residential 5 Y Commercial | 20 Y Residential 10 Y Commercial | 15 Y Residential 5 Y Commercial | 20 Y Residential 10 Y Commercial | 15 Y Residential 5 Y Commercial | 15 Y Residential 5 Y Commercial |

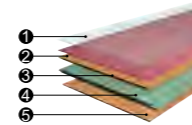
naturals

- 1 • WEARTOP or PUR HotCoating® finish
- 2 • High-density natural cork surface, 3 mm thickness
- 3 • Moisture resistant, high-density fibreboard (870kg/m³) 6 mm thickness
- 4 • All around JointShield® edge sealing system
- 5 • Integrated cork underlay 1.5 mm thickness with Microban® antibacterial protection



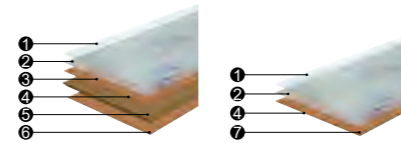
recolour

- 1 • High performance PUR HotCoating® finished with 2 component waterborne top lacquer
- 2 • High-density natural cork surface, 3 mm thickness
- 3 • Micro-bevelled edges
- 4 • Moisture resistant, high-density fibreboard (870kg/m³) 6 mm thickness
- 5 • Integrated cork underlay 1.5 mm thickness with Microban® antibacterial protection



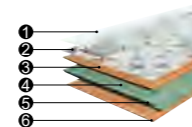
vita classic | vita decor flow

- 1 • High performance PUR HotCoating® finished with 2 component waterborne top lacquer
- 2 • High Definition Digital Printing
- 3 • High-density natural cork surface, 3 mm thickness
- 4 • Micro-bevelled edges
- 5 • Moisture resistant, high-density fibreboard (870kg/m³) 9/6 mm thickness
- 6 • Integrated cork underlay 1.5 mm thickness with Microban® antibacterial protection
- 7 • High-density natural cork, 4 mm thickness



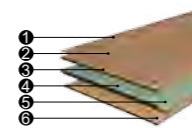
vita decor trim | vita decor retile

- 1 • WEARTOP-ARMOUR HPC super matt finish with anti-slip effect
- 2 • High Definition Digital Printing
- 3 • High-density natural cork surface, 3 mm thickness
- 4 • Moisture resistant, high-density fibreboard (870kg/m³) 6 mm thickness
- 5 • All around JointShield® edge sealing system
- 6 • Integrated cork underlay 1.5 mm thickness with Microban® antibacterial protection



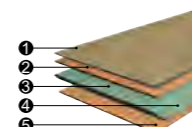
kenko

- 1 • Electron beam (EB) hardening technology
- 2 • Innovative PVC-free surface 0.2mm
- 3 • High-density natural cork, 1.8 mm thickness
- 4 • Moisture resistant, high-density fibreboard (870kg/m³) 6 mm thickness
- 5 • All around JointShield® edge sealing system
- 6 • Integrated cork underlay 1 mm thickness with Microban® antibacterial protection



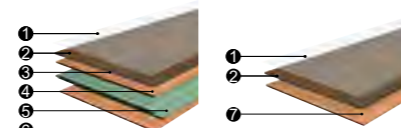
vinylcork

- 1 • Luxury vinyl 2mm thickness and 0.3 mm wear layer
- 2 • Agglomerated cork sound insulation, 1mm thickness
- 3 • Moisture resistant, high-density fibreboard (870kg/m³) 6 mm thickness
- 4 • All around JointShield® edge sealing system
- 5 • Integrated cork underlay 1.5 mm thickness with Microban® antibacterial protection



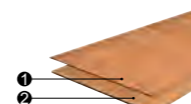
corium

- 1 • High-quality AQUA2K+ 2 component waterborne finish
- 2 • Genuine recycled leather 2 mm thickness
- 3 • Micro-bevelled edges
- 4 • Agglomerated cork sound insulation, 1 mm thickness
- 5 • Moisture resistant, high-density fibreboard (870kg/m³) 6 mm thickness
- 6 • Integrated cork underlay 1.5 mm thickness with Microban® antibacterial protection
- 7 • High-density agglomerated cork, 2 mm thickness



tradition

- 1 • Cork veneer
- 2 • High-density agglomerated cork backing



MAINTENANCE

All GRANORTE floors are easy to maintain. However, as any kind of floor, it requires continuous and proper cleaning and care so that the surface protection and the attractive appearance of the floor are maintained.

Preventive care

The floor must be kept clean. Never use cleaning products with abrasive ingredients or solvent based.

Furniture legs should have protective pads to avoid scratches. Furniture and other heavy objects must be placed carefully.

A doormat should be laid inside the front door to help protect against dirt and sand.

Chair castors should be of type W (soft). For additional protection, polycarbonate mats under castor chairs should be used.

Prolonged contact of plasticizer-containing material (e.g. rubber, latex, plastics...) with the varnish may cause non-reversible stain of the floor.

Avoid sharp or pointed objects with concentrated weight such as high heels on your cork floor.

Cork is a natural product and may tend to fade when exposed to sunlight over long periods of time. Use blinds or curtains to prevent cork fading by direct solar radiation.

Cleaning

GRANORTE floorings must be cleaned regularly with a mop, hair broom or vacuum cleaner. Dust and dirt behave like sanding paper and are thus to be removed immediately. If necessary (heavier soiling) the floor can be damp-mopped using an appropriate cleaning product.

Maintenance

Maintenance caring can become necessary from time to time to refresh the protective layer. First clean your floor and then apply a thin layer of a recommended maintenance product.

Please observe the particular maintenance instruction for your floor. For the correct use follow the instructions on the packaging labels of each product, as well as the information from technical data sheets.

Attention

GRANORTE floorings are made with high quality, natural materials and should be handled accordingly. In spite of all due care given during manufacturing, there will be variations in appearance (colour, gloss, and texture). This should be verified before laying the floor, distributing the tiles/planks in a way that variations are not striking.

Cork (as wood) may change colour when exposed to sunlight over long periods of time.

Although every effort has been made to ensure accuracy during the production of this catalogue, GRANORTE disclaims potential product changes and possible print errors. The product photos may not accurately match the real colour and texture of the finished product.

GRANORTE®
delivering nature

GRANORTE - Revestimentos de Cortiça, Lda.
Avenida Santiago, 68 | 4520-470 Rio Meão | PORTUGAL
info@granorte.pt | www.granorte.pt

GRANORTE GmbH DEUTSCHLAND
Nimrodstraße 22 | 90441 Nürnberg | GERMANY
info@granorte.de | www.granorte.de

GRANORTE UK LTD
Unit 29 Littleton Business Park | Huntington | Cannock WS12 4TR | UK
info@granorte.co.uk | www.granorte.co.uk

B.E.O Srl - over the cork
Via Sacco e Vanzetti, 6-6/a | 42021 Ghiardo di Bibbiano (RE) | ITALIA
info@granorte.it | www.granorte.it

Shanghai Parquet Cork Import & Export Co., Ltd.
No. 667 Long Ziwei Rd. | Building 135, Room 201
Pudong Dist. Shanghai 201210 | CHINA



Made from 100% recycled de-inked recycled pulp fibres

