



m o o o i[®]
c a r p e t s

Discover a world
of opportunities

**Discover a world
of opportunities**



moodi

MOODI THE DISTINCT ANIMALS

MOODI THE DISTINCT ANIMALS

MOODI THE DISTINCT ANIMALS

MOODI THE DISTINCT ANIMALS

Moooli Carpets presents

A WORLD OF OPPORTUNITIES

The unstoppable growth of Moooli Carpets seems never ending. Ever since we first started Moooli Carpets in 2015 we keep improving our product and service so you as our client will always find the perfect match. Last year we presented The Extinct Animals Collection as part of Moooli's new design language. Celebrating the richness of nature, Moooli imagined carpet designs based on textures, colors and shapes of imaginative Extinct Animals.

At Moooli Carpets we also believe in the beauty of surprise. Therefore, we came up with a brand new Local introduction in Stockholm February 2019. The launch of a new collection "The Nordic Collection" made by four well-known International designers based in the Nordics. From now on, we will launch our novelties all year round, celebrating our novelties however and whenever we think is best.

This year during Salone del Mobile 2019 you may expect exciting new collections by Dutch designers Mae Engelgeer and Claire Vos, so keep your eyes open!

At Moooli Carpets we constantly improve our printing technique and scout for the best materials and products to stay up-to-date towards the international market. Our goal is to keep serving our global clients on exciting hospitality projects. We have endless possibilities to find the perfect match for any interior. Innovative, custom and unique at the same time.

Discover a world of opportunities and celebrate
A life extraordinary!



NEW SIGNATURE COLLECTIONS

EXTINCT ANIMALS by Moooi **8**
QUIET by Moooi **30**

NORDIC **36**

MAZE by Note
CRYSTAL by Luca Nichetto
REFLECTIONS by Ingimar Einarsson
WALKING ON CLOUDS by Front

YARN BOX by Claire Vos **46**

SWELL by Mae Engelgeer **48**

AIRES & AXEL by Megan Grehl **50**

LE TEMPLE by Maison Christian Lacroix **52**

NEW URBAN MANDALA'S by Neal Peterson **54**

CUSTOM COLLECTION

YOUR OWN DESIGN **56**

WHY MOOOI CARPETS? **62**

COLORS & MATERIALS **64**

SIGNATURE DESIGNERS **66**

SIGNATURE RUG COLLECTION **68**

SIGNATURE BROADLOOM COLLECTION **80**







Introducing the

EXTINCT ANIMALS COLLECTION

by Moooi

Since the dawn of human civilisation, curiosity and a great sense of adventure have tempted explorers to undertake risky adventures in search of the unknown. New worlds were waiting to be discovered by those who persevered and survived the dangers along the way. The life of an explorer was tinged with fear and excitement, hard work and physical discomfort. After months or sometimes years of tainted travels, we can only imagine the rush of adrenaline going through a sailor who spotted new land, or an explorer who looked into the eyes of an unknown animal. We can merely try to picture it ...

Some adventurers set out with a purpose: they would seek a golden treasure to change their destiny, the fountain of youth to live forever. They chased their dream with youthful dedication, possessed by a great desire for adventure, seeking a life of excitement. What they actually discovered were much greater treasures for humanity: fish that could fly, amazing-looking birds that sang like angels and underwater creatures glowing in the dark! If safely returned to what they called civilization, they reported of remarkable new worlds and the rich beauty of exotic, diverse and extraordinary animals. Birds with plumage the colour of the rainbow, cute smiling creatures hanging high up in florid trees, breath-taking animals of all dimensions began to populate new myths and stories. Even though most of these animals were never seen again, the variety and diversity of nature exceeded imagination and puzzled even the most sceptical.

A collection of ten beautiful carpets bring some Extinct Animals back into our lives, untamed and beautiful and printed on extremely soft and comfy materials.



Aristo Quagga Rug

BY MOOOI

ARISTO QUAGGA RUG



Cut in a hexagon shape, like a precious stone, the *Aristo Quagga* rug bears a pattern found in the mane of one of the regal cousins of the zebra. Moulded into a kaleidoscopic pattern, the rug sports hues of brown, grey, white and black.

ARMoured BOAR RUG



The *Armoured Boar* carpet absorbs the animal's nature without compromise. Just like the powerful outfit of an *Armoured Boar*, it gives an untamed first impression. Looking closer, though, you'll see its soft side: dark floral motifs enclosed by a precious, silvery glow.



Armoured Boar Rug

BY MOOOI



Bearded Leopard Rug

BY MOOOI

BEARDED LEOPARD RUG



The cryptic and mysterious nature of the *Bearded Leopard* is incorporated within this pattern. The warm colouring at the heart of the carpet is overtaken by splashes of colour as black as the darkest night. The rug's form, bursting with energy, is a reminder of the feline beauty of this godly creature.



BLOOMING SEADRAGON

The *Blooming Seadragon* carpet pays an homage to the spectacular pattern of grey-blue droplets & organic-looking compositions of the *Blooming Seadragon's* skin. Set on a dark background, the ancient, almost alien-looking structure is decorated with fluctuating splashes of colour.



Blooming Seadragon Rug

BY MOOOI



Blushing Sloth Rug

BY MOOOI



BLUSHING SLOTH RUG



A pale green glow, resembling the algae on the *Blushing Sloth's* fur, stands out among shrubs of white fur, rough dark valleys and mysterious shadows. Earthy and multi-textured, this carpet is a rectangular example of a world within a world.



CALLIGRAPHY BIRD RUG



Calligraphy Birds were often seen posing and dancing to attract a partner. The male would move in a rhythmic dance, the blue hues of his ornate collar feathers shining in the sun. The female would fan her white tail feathers that ended in what resembled graceful calligraphy swirls.



Calligraphy Bird Rug

BY MOOOI



Dodo Pavone Rug

BY MOOOI



DODO PAVONE RUG



The *Dodo Pavone* rug's pattern is a harmonious blend of silvery, beige, pink & white plumes and feathers with different textures. This soft nest of silky feathers, so like the animals' amiable and gentle nature, invites you to dive into this carpet.

DWARF RHINO RUG



The *Dwarf Rhino* carpet brings a touch of mighty elegance to any space, with its martial-looking pattern of blue-grey scales, resembling a suit of arms. The animal's skin served as the perfect muse for this square rug, resembling a mighty warrior.



Dwarf Rhino Rug

BY MOOOI



Flying Coral Fish Rug

BY MOOOI

FLYING CORAL FISH RUG



The graceful airy glide of the ethereal *Flying Coral Fish* is, alongside the beauty of the dense underwater world, captured in a harmonious square rug. The blue-grey, black speckles and coloured circles create a magical world with a contrasting nature: liquid and airy, rounded and sharp.



UMBRELLA SQUID RUG

The bioluminescent jewel pattern of deep blues and velvety, ruby red sparkles in the *Umbrella Squid* carpet, pays the perfect tribute to this ancient creature. In a perfectly round shape, resembling an open umbrella, light and shadows gracefully fluctuate in a magical underwater world.



Umbrella Squid Rug

BY MOOOI

Quiet Collection

The Quiet collection, with its understated luxury, gives way for extraordinary Moooi designs to shine even brighter. The collection's design brings a subdued elegance as the base for any space and provides a centre space for extraordinary design.

The Quiet carpets is a collection of four designs in different colourways, inspired by the beauty and transiency of nature; Horizon, Morning, Erosion and Patina



Patina

BY MOOOI



Patina Fog



Patina Moss



Patina Brick



Patina Cinnamon

The subtle colours of Patina appear to be ethereal and fleeting like a fine haze captured by light. Patina catches this momentary perception in four simultaneously outspoken and subdued colourways.

QUIET COLLECTION

Horizon

BY MOOOI



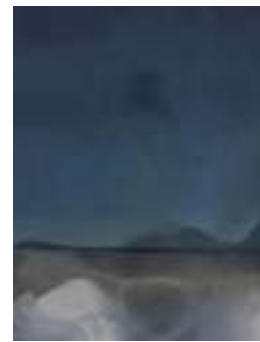
Horizon Fog



Horizon Sunrise



Horizon Lake



Horizon Bay

The softness of Horizon is due to the water-colour inspired textures and shapes of the collection. Its colours a gentle reminder of how our perception of a horizon is subject to change depending of time and place.

Morning

BY MOOOI



Morning Asphalt



Morning Clay



Morning Nude



Morning Shimmer

The softness of Horizon is due to the watercolour inspired textures and shapes of the collection. Its colours a gentle reminder of how our perception of a horizon is subject to change depending of time and place

Erosion

BY MOOOI



Erosion Rust



Erosion Rosegold



Erosion Moon



Erosion Rhodonite

Equivalent to beginnings, endings hold a type of beauty only nature can provide. The transiency of material can be a glorious thing to behold. The different colourful stages of natural Erosion captured in a carpet collection to be admired forever.

Nordic Collection

MOOOI CARPETS selected four recognized designers from the Nordics to create a compelling *Signature Collection* with a typical Nordic aesthetic. The four separate concepts are each inspired by elusive elements like faceted crystals, colourful clouds, stained glass and abstract labyrinths.

The results are sparkling designs which show us the beauty within these precious things of life. The *Nordic Collection* consists of four carpet designs available in all standard rug sizes as well as broadloom patterns. The surprising and completely different designs gently blend into any kind of space, adding a touch of Nordic aesthetic, abstract or organic magic and especially joy to your own interior landscape.

FRONT

Sofia Lagerkvist and Anna Lindgren are the members of the Swedish design group Front. Their versatile works are based on discussions, explorations and experiments. They create constantly changing interiors, objects with explosions, robotic furniture and furniture inspired by their fascination with magic.



LUCA NICHETTO

In 2006 Luca Nichetto founded his multidisciplinary design studio in Venice, specialized in industrial design, product design and design consultancy. In 2011 Nichetto opened a second studio in Stockholm, in response to an ever growing number of requests for collaboration from international companies.

INGIMAR EINARSSON

Ingimar Einarsson is a designer from Iceland with a studio in London. His work has a focus on multimedia and photography and includes *The Capital Series 2011-2016*; a photography collage series made from architecture from 52 capitals in Europe. His works are held in collections including London, Helsinki and New York.



NOTE

Note is a Stockholm based multidisciplinary design studio, founded in 2008. They collaborate intensely with passion, to share their insights with the world. Creativity is about searching for what is missing, to constantly realign thoughts and expressions, to find that moment of insight when everything clicks.



Maze

BY NOTE



Rugs & Broadloom available in three colourways and in different shapes and sizes.



Maze Puglia



Maze Tical



Maze Miami

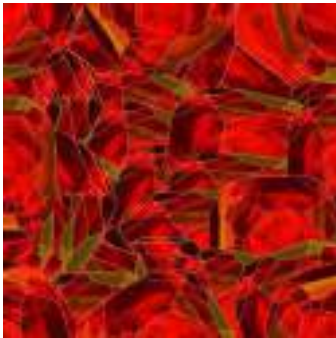
NOTE was inspired by a 3D puzzle game, where one can build sculptures in non-directional ways. The carpet designs have no up or down, no left or right, nor any sense of direction. Just an intriguing labyrinth of opportunities. Their names are depicted from geographical places with a strong connection to this certain type of architecture.

Crystal

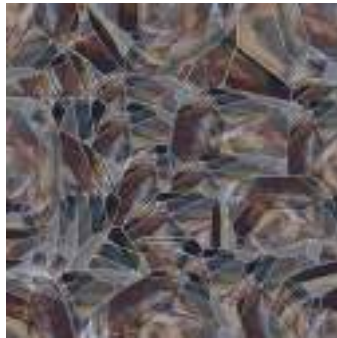
BY INGIMAR EINARSSON



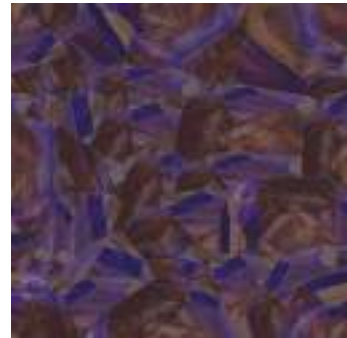
Rugs and broadloom available in three colourways



Crystal Red



Crystal Brown



Crystal Purple

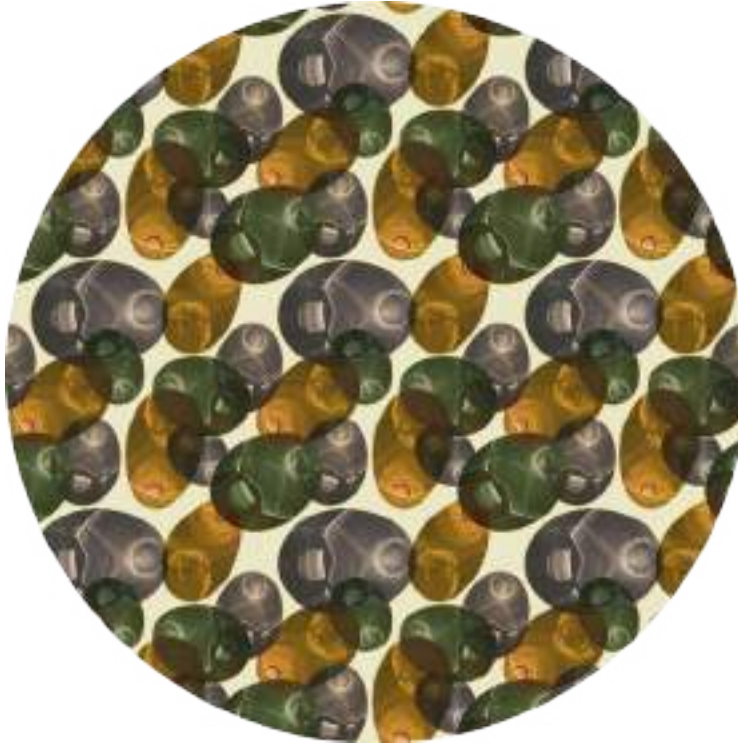
INGIMAR was inspired by the geometric forms of the Hydroxyapatite crystal. Within the designs of the Crystal carpets, the various translucent layers create an on-going depth, as if the crystals are reflected by thousands of mirrors. The bright colours in combination with the darker colour families amplify this effect of reflection and light play.





Reflections

BY LUCA NICHETTO



Rugs and broadloom available in two colourways and in different shapes and sizes.



Reflection Spring



Reflection Autumn

When the sun is reflecting stained glass it creates magic of abstractions over the canals in Venice. The Reflections rugs reproduces these playful structures of light. The different scales, colours, textures and refractions inside the objects create elusive and ever changing figures, one that imagination and perception can interpret openly.

Walking On Clouds

BY FRONT



Rugs available in two designs, in different shapes and sizes. Broadloom available in one pattern.



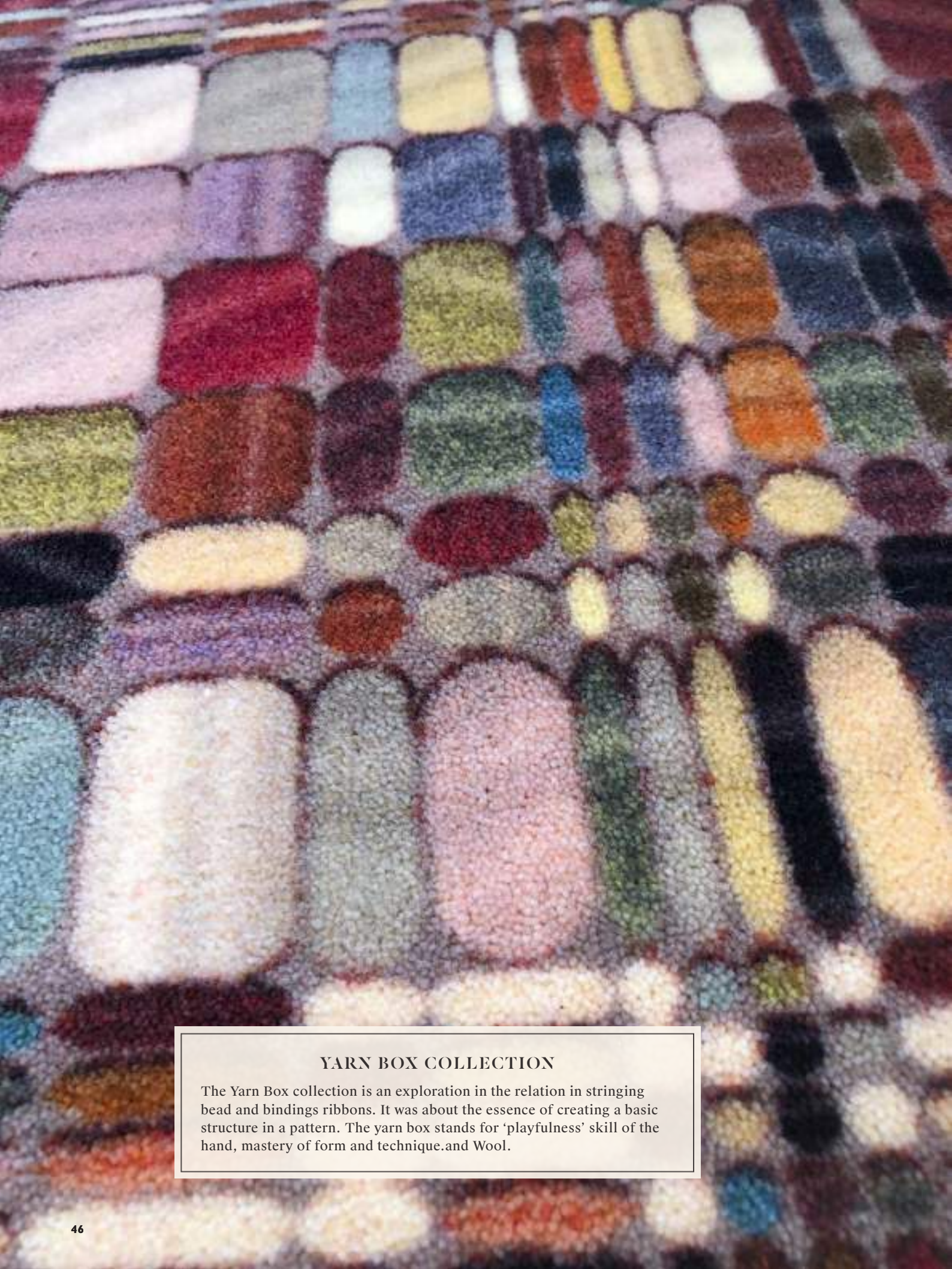
Walking on Clouds Dawn



Walking on Clouds Dusk

FRONT studied representations of clouds in paintings and found hundred tones and shades. Their carpets are a collage of clouds depicted from a variety of media from different eras. Clouds have inspired artists, scientists and writers for centuries, and their attempts to capture these ephemeral sculptures are reflected by brushstrokes and marks.



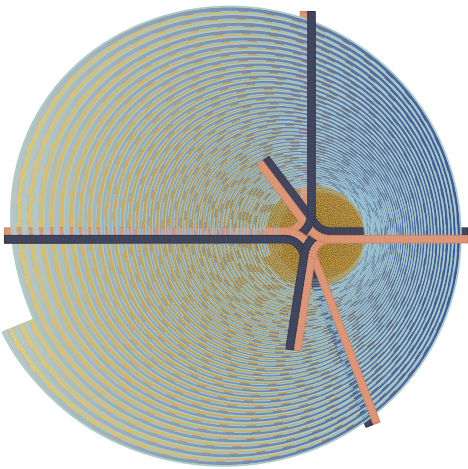


YARN BOX COLLECTION

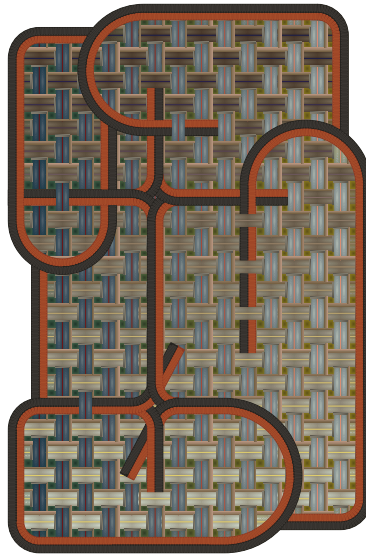
The Yarn Box collection is an exploration in the relation in stringing bead and bindings ribbons. It was about the essence of creating a basic structure in a pattern. The yarn box stands for 'playfulness' skill of the hand, mastery of form and technique. and Wool.

Bows, Tangles & Beads

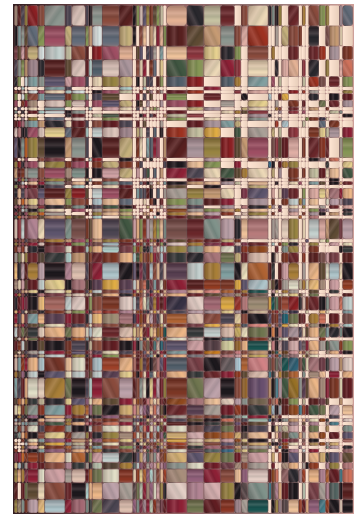
BY CLAIRE VOS



Bow Shanghai



Tangle Menjangan



Bead (Rugs & broadloom)

*Bow & Tangle available as rug in two colorways and in two sizes.
Bead available in two scales, different shapes and size rugs and as broadloom pattern.*

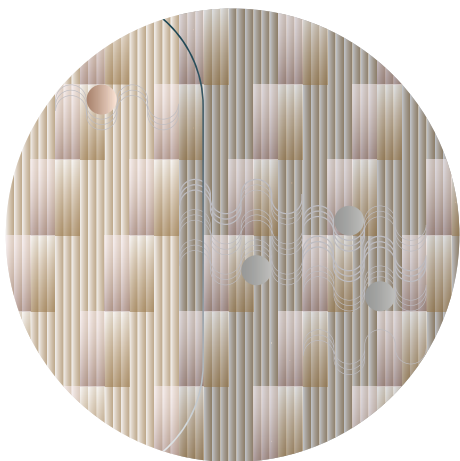
CLAIRE VOS

Claire Vos started her studies in Industrial Design at Eindhoven's "Design Academy" in 1984. She worked as a trainee at Studio Benno Premsele in Amsterdam and Creation Baumann in Switzerland and studied her craft in Italy and Indonesia before graduating in 1990 together with her partner, furniture designer Roderick Vos. During that year she and Roderick moved to Indonesia, Surabaya, Java to develop their knowledge of rattan furniture and textile production. This particular period evidently had a large impact on her personal interest in Asian Culture and its works. In 1999 Claire & Roderick Vos officially started their design office 'Studio Roderick Vos', based in Heusden Vesting, the Netherlands. They design: lighting, textile, accessories and furniture for international design brands.

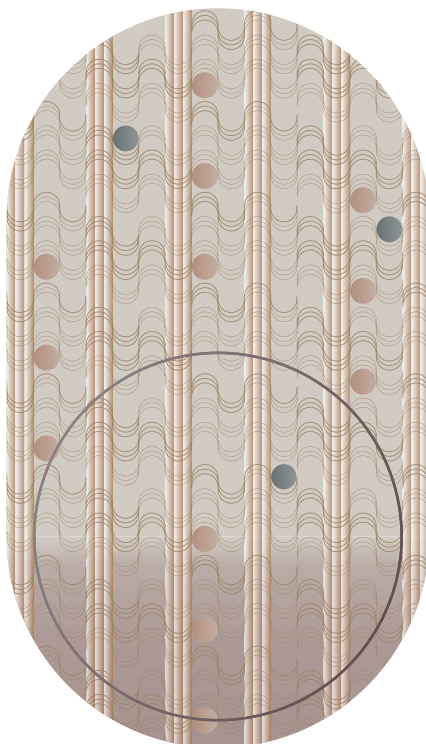


Swell

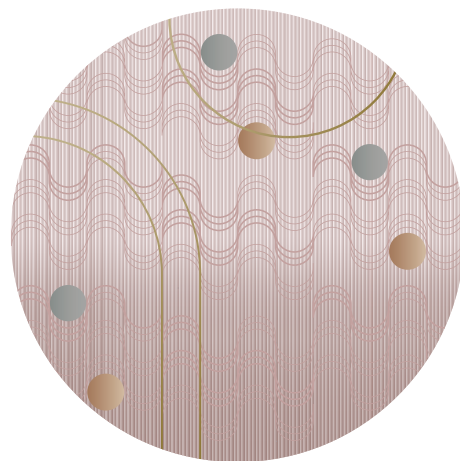
BY MAE ENGELGEER



SWELL Citrine



SWELL Sunstone



SWELL Rose Quartz

Rugs available in two sizes.



MAE ENGELGEER

Mae Engelgeer's work embraces subtle colour palettes, patterns and linear elements. Complex compositions merge with perfection to establish harmony. Creative explorations into the contrasting of materials and textures result in works that are luxurious in their tactility and dimensionality.



SWELL COLLECTION

For this collection Mae Engelgeer translated graphics that refer to 70ties patterns, into an elegant play of rounded shapes. Lines that give a subtle rib effect and carefully positioned colorful circles brighten up the subdued color palette. Her soft elegant approach to textiles gives SWELL a groovy yet contemporary atmosphere.

MEGAN GREHL COLLECTION

Aires & Axel

BY MEGAN GREHL



Aires



Axel

Rugs available in two sizes.



MEGAN GREHL

Founded in 2014 in Brooklyn, Megan Grehl is known for sculptural gestures, simple silhouettes and layered textures that instill a sense of harmony. The interior design and architecture team work internationally on high-end residential and commercial projects.



AIRES & AXEL

Megan Grehl's Design team designed two rugs as an ode to the intricate and ornate Moooi Carpets collection. The graphic motif for each design was inspired by Brutalist abstract forms, including those of Basque sculptor Eduardo Chillida. Each rendition is composed of multiple graphic layers that create the illusion of depth and dimension, transforming the rug into a three-dimensional accessory.

Le Temple

BY MAISON CHRISTIAN LACROIX



Le Temple Jais Rug



Le Temple Bronze



Le Temple Blue Nigelle

Since the launch of the Couture House in 1987, the Christian Lacroix style has been unique, exuberant, colorful and baroque. Today, Maison Christian Lacroix expresses its dynamism and love for color via its lifestyle, fashion accessory and menswear collections designed by the brand's Creative Director, Sacha Walckhoff and made in collaboration with several prestigious labels. Combining the excellence of Christian Lacroix with exceptional savoir-faire, the Studio's talent is conveyed through the realization of these varied and unique lifestyle collections.



LE TEMPLE

The traveller has drifted from port to port, journeying from Heraklion to the slopes of Vesuvius, driven by a thirst for a long-forgotten mystery. Enthralled by universal beauty, he has sought its secret from Ancient Crete to Pompeii, the everlasting city. Inspired by his quest for knowledge and meaning, he remembers a fragment of fresco, an unfinished mosaic, the sculpted Acanthus leaves and garlands of flowers that once clothed these sacred walls. Shapes and patterns intermingle. The marks of the past melt into the designs of the present. On the floor, the artist gives shape to his memories, creating “Le Temple”, a carpet that is an ode to all aesthetes, present and past.



URBAN MANDALAS

In Hindu and Buddhist a mandala is a figure representing the universe, communicating unity and harmony. Peterson creates his own mandalas based on the look and feel of cities that hold a special place in his heart. Each design englobes its own elaborate pattern and set of colours, yet they all connect and blend into each other at a higher level.

New Urban Mandalas

BY NEAL PETERSON



Paris Montmartre



Las Vegas



Rotterdam



Brussels



Amsterdam

NEAL PETERSON

Neal Peterson is an American artist based in Minneapolis whose work is influenced by his travels around the globe. In 2016, Peterson began creating large-scale collages of cities composed of original street photography. Combining iconic architecture, natural elements, graffiti and more, his Urban Mandalas capture the blossoming, fractal nature of cities. With Buddhist art as inspiration, these kaleidoscopic microcosms represent the oneness and connectivity of a city and its people. Each design is unique in its details, but the form remains the same throughout the series, illustrating our commonalities and collective humanity.

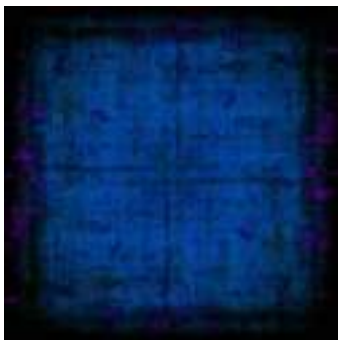


Customize your own carpet

THE CONFIGURATOR



Paperstack custom carpet



Painted Composition



Spiroflower



Decay

Customize your own carpet with our online Carpet Configurator. Click by click you can adjust the colour, shape and dimension of the pattern of your choice into your own unique carpet. Visit our website and try it yourself!

mooicarpets.com/configurator



How we work & what we need

CREATE YOUR CARPET STEP BY STEP

Every flooring project runs through our 12 step procedure, which we carefully follow in close collaboration with you.

1. Contact us with your design

We will be at your side from start to finish, even in unusual and complex projects. Our carpet experts with years of experience are here to help you in any stage of the procedure.

2. Create Your Own Design

If you are creating a YOD carpet we will guide you with our “How we work and What we need” document, in order to deliver a printable file within the given time line. For vector based designs you can use the colors of our colorbox or determine specific colors in RAL/Pantone. For photorealistic designs the colors are based on a RGB color profile.

A printable design file has to be:

- 30PX per Centimeter =76,2 DPI
- Color profile RGB Adobe 1998
- Correct size: rugs maximum 400cm width /broadloom repeats fitting in 394cm width
- TIF file format reduced to one layer

3. Decision

Choose the right material, backing and finish for your flooring project. Our Sample Kit can help to make the perfect choice. For more information about colors, materials and finishes visit our website.

4. Contract form & budgetting

To kick-start your project we need our completed contract form. This form informs us about specific data including:

- Name of designer
- Name of client
- Name of Carpet design(s)
- Quantity: Amount of m² (number of rugs and /or m² broadloom)
- Quality, backing and finish of the carpets
- DWG file (floorplan with all measurements)
- Lead time (when do we have to deliver)
- Address etc.

We can offer m² prices of different materials so you can make the best choice within your budget. Total amount of meters can differ from the total surface of your project because of instalment waste. We have to define your design (after sampling) within your DWG floorplan to be able to calculate complete carpet volume.

5. CAD file & sampling

Creative color and graphic implementation of your design will be done by our experienced carpet designers. CAD printouts will be dispatched by e-mail for your approval. We will start printing your sample within 10 working days after approval. Our team of specialised textile professionals will print a sample of the approved CAD designs on the chosen carpet quality.

6. Sample approval

Our standard size of sampling is 49 x 49 cm. We will advise you when a bigger sample is needed for approval, depending on size of your complete design. After approval of the sample we can start working on the floorplan and quotations.

7. Calculation & final quotation

We will create a final quotation based on given information related to the on-site measurements. We can support you in creating a floorplan and calculation for your bigger volume project. After delivering us your DWG file with the specified carpets areas, we will provide you with an offer for creating a floorplan and calculation based on the volume and complexity of the project. The floorplan is a “made to measure floorplan”. This made to measure floorplan will be created and produced in the most economical way in order to avoid too much waste.

After approval of our production plan quotation we will provide you with final floorplan and calculations.

Based on the final floorplan we create the final quotation. Additionally, we can offer a visual presentation of the required flooring layout within your project.

8. Approval

Your final approval of our production plan and quotations.

9. Production

Your carpet will be produced on our state of the art chromojet 800 production machine with incredible accuracy. After printing we will provide the chosen backing and finish your carpet within given timeline.

10. Delivery

Wall-to-wall carpets with Action backing can be delivered after 3 weeks of your final approval. Rugs will take 6 to 8 weeks because of more complex backing and finishing.

11. Installation

For the best installation of your custom-made carpet we can offer you a installation plan including the number of rolls per design, measurements of each roll and the instalment of each roll within your project. We are very happy to inform you about experienced people within our network if supervision is wanted.

12. Result

The final result of your carpet perfectly fitted for your project. See next pages for examples of completed Your Own Design projects.

YOUR OWN DESIGN CARPETS APPLIED



YOUR OWN DESIGN CARPETS APPLIED



Why Moooi Carpets?

INFINITE CARPET FLOORING SOLUTIONS

Moooi Carpets is more than just a carpet. We provide custom services from start (idea) to finish (result). Our worldwide retail showroom network includes experienced interior designers, advisors, highly skilled carpet- and fabric printing professionals with years of experience in carpet project installation.

Advantages and unlimited choice

High resolution digital printing without color limitations

The highest resolution technique available in industrial carpet printing, using virtually any color.

Print on pre-backed material

Accurate and easier installation for seamless repeatable patterns without stretching.

Environmental Friendly

Less dye waste, fewer cleaning cycles and less energy consumption.-

Small minimum volume

Accessible and flexible, due to our on-demand model for carpet imaging

Always a perfect match

We offer 3 different product groups in order to find a perfect carpet match for your specific project:

1. Signature collection

Broad collection of Signature rugs and wall-to-wall patterns made by well-known international designers.

2. Moooi Custom collection

Wide range of adjustable designs in our configurator. Choose your own color, shape and size.

3. Your Own Design

Your own design, especially made for your unique project or environment.



Colors and materials

INFINITE CARPET FLOORING SOLUTIONS

Having the ability to work with the finest technology is one thing, but offering customers complete flexibility and high quality products is just as important. To ensure assured performance and adaptability, we offer different materials with several backing and finishing options.

Saxony (Low Pile 100% PA)

Our Essentials in premium heatset-polyamide-6 cut-pile constructions are available in three different pile weights: 900, 1100 and 1300 g/m². Our PA features a textile backing and is recommended for heavy contract use.

High Pile Soft Yarn (100% PA)

Our new tufted raw product with a pile weight of 1750 g/m². This durable material combines all benefits of a floor covering for individual interior design. If desired, we also deliver this new feel-good quality for accurate to size prints for bordered carpets: in line with the corporate design of your partners or as an eye-catcher for hotel lobby, luxurious studio or stylish suite.

Wool

Our wool is a hard-wearing fabric with 80% high-quality New Zealand wool from European production with a pile weight of 1400 g/m². Wool is warm, breathes, regulates the room temperature, absorbs moisture and is easy to clean.

It includes all the benefits of natural material while meets the growing desire for sustainability.

**Please consult our data sheets on page 26 tm 28 for complete specifications and additional information on certifications and seals for all our material options.*

BACKING OPTIONS

Action backing

For heavy use in commercial properties

Felt backing

Great comfort and sound absorption

FINISH OPTIONS

All runners or non wall-to-wall carpets must be finished to prevent fraying or unraveling. We offer two finish options.

Overlock

An overlock creates a yarn stitched finish. Overlock finish resembles a hand - sewn

look, although it is done by machine.

Overlock uses a thick fiber that is wrapped around the edge of the carpet continuously.

Blind hem

With blind hem a textile strap is sown to the edge of the carpet and folded back around the edge, then pasted on the backside of the carpet. You won't see the stitching.

Our technical specifications are based on EU policies. For specifications in other countries please contact us.

MATERIAL TOOLS

Moooli Carpets sample kit

Our Sample Kit contains information about all materials, finishes and backing options.

Moooli Carpets colorbox

Our Colorbox contains the real printed colors on our PA (Low Pile) material, matched with our online color tool (only for vector based designs).





*bertjan
pot*



edward van vliet



*Christian Lacroix
Paris
maison christian lacroix*



marian bantjes



*claire
vos*



tricia guild



*valerio
sommella*



ross lovegrove



*neal
peterson*



*klaus
haapaniemi*



moooi



noortje van eekelen



*barbara
broekman*



sonya pletes



*marcel
wanders*

*kustaa
saksi*



mae engelgeer



broersen & lukacs



neri & hu



*megan
grehl*



note



**WE LISTEN TO WHAT DESIGNERS WANT TO MAKE.
WE TRY TO REALISE THEIR DREAMS!**

kit miles



david/nicolas



studio job



front



ingimar einarsson



*luca
nichetto*



SIGNATURE RUGS BY MARCEL WANDERS



EDEN QUEEN



EDEN QUEEN



FOOL'S PARADISE



FOOL'S PARADISE



DELFT BLUE PLATE



FESTIVAL INFERNO



FESTIVAL MIDNIGHT



DIGIT GLOW



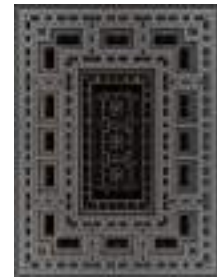
EDEN KING



S.F.M. #075



S.F.M. #076



S.F.M. #077

JACQUARD WOVEN RUGS



BLUEBERRY FIELDS



CRYSTAL ROSE



HEAVEN'S GATE



DRY

All our signature rugs are available in Low Pile Polyamide and Soft Yarn Polyamide and Wool. Some are available in different colors and sizes
Please visit www.moocarpets.com to see the full collection and technical information in detail.





SIGNATURE RUGS BY MOOOI

EXTINCT ANIMALS COLLECTION



ARISTO QUAGGA



ARMOURED BOAR



BEARDED LEOPARD



BLOOMING SEADRAGON



BLUSHING SLOTH



DODO PAVONE



DWARF RHINO



FLYING CORAL FISH



CALLIGRAPHY BIRD



UMBRELLA SQUID



MENAGERIE OF
EXTINCT ANIMALS*

QUIET COLLECTION



PATINA FOG



HORIZON SUNRISE



MORNING ASPHALT



EROSION RUST

* Scale might differ

All our signature rugs are available in Low Pile Polyamide, Soft Yarn Polyamide and Wool. Some rugs are available in different colorways and sizes. Please visit www.moobicarpets.com to see the full collection and technical information in detail.



NORDIC SIGNATURES



CRYSTAL BROWN
by Ingimar Einarsson



CRYSTAL PURPLE
by Ingimar Einarsson



CRYSTAL RED
by Ingimar Einarsson



MAZE MIAMI
by Note



MAZE PUGLIA
by Note



MAZE TICAL
by Note



REFLECTIONS SPRING
by Luca Nichetto



REFLECTIONS AUTUMN
by Luca Nichetto

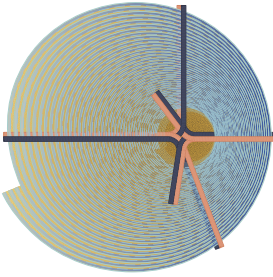


WALKING ON CLOUDS DAWN
by front

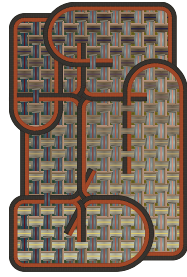


WALKING ON CLOUDS DUSK
by front

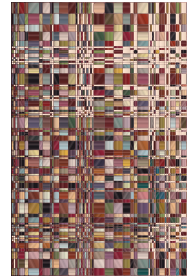
SIGNATURE RUGS



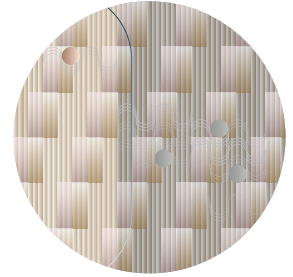
BOW SHANGHAI
by Claire Vos



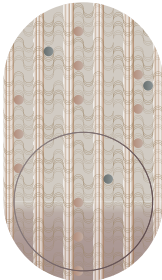
TANGLE MENJANGAN
by Claire Vos



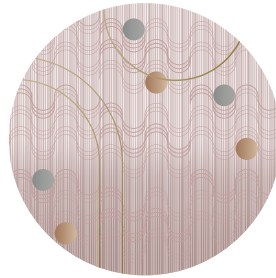
BEAD
by Claire Vos



SWELL CITRINE
by Mae Engelgeer



SWELL SUNSTONE
by Mae Engelgeer



SWELL ROSE QUARTZ
by Mae Engelgeer



AIRES
by Megan Grehl



AXEL
by Megan Grehl



CELESTIAL
by Edward van Vliet



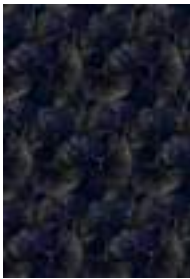
DIAMOND TREE
by Edward van Vliet



GARDEN OF EDEN GREY
by Edward van Vliet



GARDEN OF EDEN LIGHT GREY
by Edward van Vliet



GINKGO LEAF
by Edward van Vliet



DUTCH SKY
by Edward van Vliet



PLANETAS
by Edward van Vliet



ZIGZAG
by Edward van Vliet



AMOEBA
by Bertjan Pot



WILD
by Bertjan Pot



FREAKY
by Bertjan Pot



LE TEMPLE JAIS
by Maison Christian Lacroix

All our signature rugs are available in Low Pile Polyamide, Soft Yarn Polyamide and Wool. Some rugs are available in different colorways and sizes. Please visit www.moocarpets.com to see the full collection and technical information in detail.





SIGNATURE RUGS



JEWELS GARDEN
Maison Christian Lacroix



MALMAISON AQUAMARINE
Maison Christian Lacroix



SCRIBBLE
Front



FIRMSHIP
Studio Job



L'AFRIQUE
by Studio Job



HERIZ
by Valerio Sommella



LILIHAN
by Valerio Sommella



SHIRAZ
by Valerio Sommella



VULTURE
by Klaus Haapaniemi



POLAR BYZANTINE-CHAPTER I
by Klaus Haapaniemi



POLAR BYZANTINE-CHAPTER II
by Klaus Haapaniemi



POLAR BYZANTINE-CHAPTER III
by Klaus Haapaniemi



POLAR BYZANTINE-CHAPTER III
by Klaus Haapaniemi



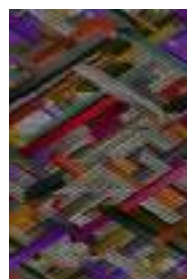
POLAR BYZANTINE-CHAPTER V
by Klaus Haapaniemi



BIOPHILLIA
by Kit Miles



DIAGONAL
by Kit Miles



KUBRICK
by Kit Miles



URBAN MANDALA
by Neal Peterson



DAZZLING DIALOGUES
by Noortje van Eekelen



UTOPIAN FAIRY TALES
by Noortje van Eekelen

All our signature rugs are available in Low Pile Polyamide, Soft Yarn Polyamide and Wool. Some rugs are available in different colorways and sizes. Please visit www.mooicarpets.com to see the full collection and technical information in detail.

SIGNATURE RUGS



LIQUID BIRCH
Broersen & Lucáks



LIQUID MAPLE
Broersen & Lucáks



REMNANT 1
by Neri & Hu



REMNANT 2
by Neri & Hu



ECO ALLIANCE
by Marian Bantjes



OCTOCORALLIA
by Kustaa Saksi



DREAMSTATIC
by David/Nicolas



COUTURE ROSE FUCHSIA
by Tricia Guild







SIGNATURE BROADLOOM



MINI TATAMI
by Bertjan Pot



STRIPES
by Bertjan Pot



CLOUDS
by Edward van Vliet



DUTCH SKY
by Edward van Vliet



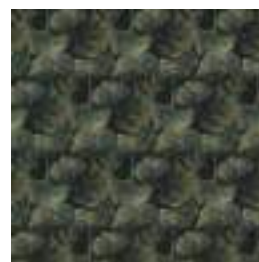
BIRDS
by Edward van Vliet



TROPICAL LEAF
by Edward van Vliet



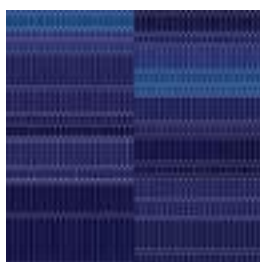
IKEBANA
by Edward van Vliet



GINKGO LEAF
by Edward van Vliet



PLANETAS
by Edward van Vliet



ZIGZAG
by Edward van Vliet



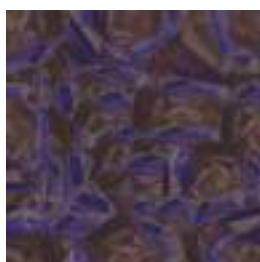
WALKING ON CLOUDS
by Front



REFLECTIONS AUTUMN
by Luca Nichetto



CRYSTAL BROWN
by Ingimar Einarsson



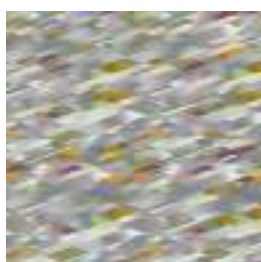
CRYSTAL PURPLE
by Ingimar Einarsson



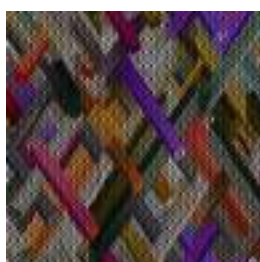
CRYSTAL RED
by Ingimar Einarsson



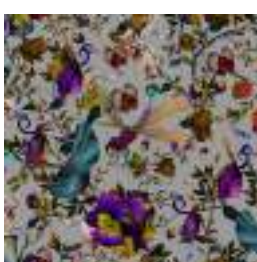
REFLECTION SPRING
by Luca Nichetto



DIAGONAL GRADIENT
by Kit Miles



KUBRICK
by Kit Miles



BIOPHILLIA SLATE
by Kit Miles



POLAR BYZANTINE
by Klaus Haapaniemi

SIGNATURE BROADLOOM



PALAIS ROYAL
by Maison Christian Lacroix



LE TEMPLE BLEU/NIGELLE
by Maison Christian Lacroix



LE TEMPLE BRONZE
by Maison Christian Lacroix



MALMAISON
by Maison Christian Lacroix



VERSAILLES X BEIJING
by Marcel Wanders



DELFT BLUE
by Marcel Wanders



EDEN QUEEN
by Marcel Wanders



FESTIVAL INFERNO
by Marcel Wanders



FOOLS PARADISE
by Marcel Wanders



GURU GARDEN
by Marcel Wanders



O.O.O.
by Marcel Wanders



S.F.M. #078
by Marcel Wanders



TARTAN HAZE
MULTICOLOUR
by Marcel Wanders



MENAGERIE OF
EXTINCT ANIMALS
by Moooi



DOD PAVONE
by Moooi



DWARF RHINO
by Moooi



FLYING CORAL FISH
by Moooi



DAZZLING DIALOGUES
by Noortje van Eekelen



UTOPIAN FAIRY TALES
by Noortje van Eekelen



MAZE MIAMI
by Note



SIGNATURE BROADLOOM



MAZE PUGLIA
by Note



MAZE TICAL
by Note



POMANDER SLATE
by Tricia Guild



DIAMOND HALL
by Valerio Sommella



IVORY HALL
by Valerio Sommella



MIRROR HALL
by Valerio Sommella

SIGNATURE CARPETS APPLIED



Hospitality



Retail



Retail



Office



Hospitality



Art & Design

SIGNATURE CARPETS APPLIED



Office



Office



Retail



Hospitality



Office



Retail

MOOOI AMSTERDAM

Westerstraat 187
1015 MA Amsterdam
The Netherlands
T +31 (0)20 528 77 60
amsterdam@moooi.com

MOOOI LONDON

23 Great Titchfield Street
London W1W 7PA
United Kingdom
T +44 (0)20 8962 5691
london@moooi.com

MOOOI NEW YORK

36 East 31st Street
New York, NY 10016
United States
T +1 646 396 04 55
ny@moooi.com

MOOOI STOCKHOLM

Norr Mälarstrand 26
112 20 Stockholm
Sweden
T +46 (0)7 3332 7200
stockholm@moooi.com

MOOOI TOKYO

Three F Minamiaoyama Building
6-11-1 Minamiaoyama
Minato-ku,
Tokyo, 107-0062 Japan
T +81(0)3-3400-1040
tokyo@moooi.com

MOOOI CARPETS HQ

Noordereinde 147a
1243 JM 's-Graveland
The Netherlands
T +31 (0)35 628 28 62
sales@moooicarpets.com
info@moooicarpets.com
www.moooicarpets.com

For product info about the Moooi collection go to www.moooi.com

©MOOOI B.V. All rights reserved

Copyright © 2019 MCI Carpets BV. All rights reserved for all text, layout and images.

No text, layout or pictures may be used or reproduced for commercial purposes by third parties, including dealers, retailers, internet shops and other, without the prior written approval by MCI Carpets BV. The use of text, layout and images or its reproduction of such in press publications – both written and digital – is permitted, under the condition that MCI Carpets BV is credited.

Although MCI Carpets BV carefully revised the content in this catalogue, some small mistakes may occur.

